

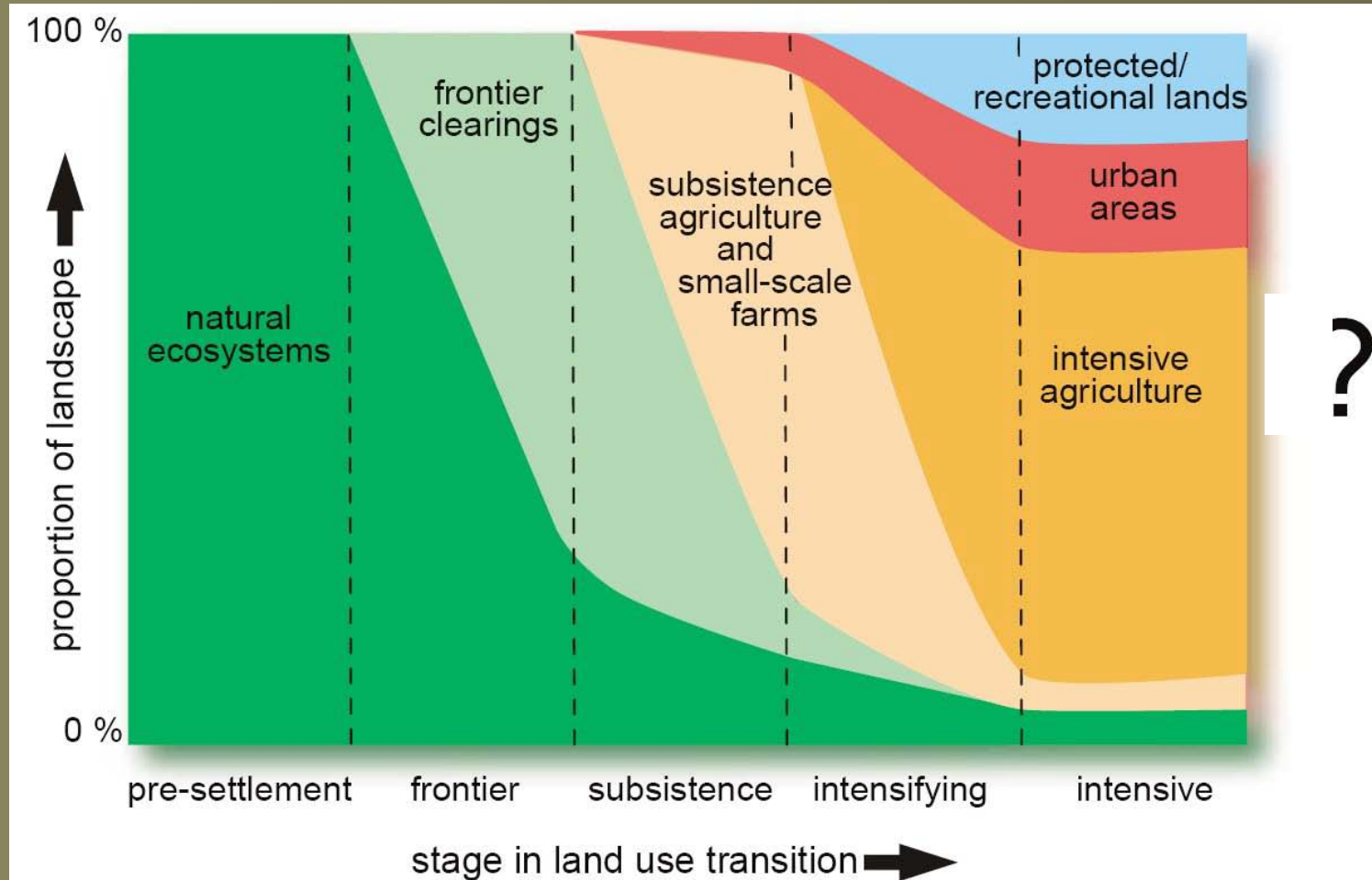
Land Changes and Institutional Drivers in the NEESPI region



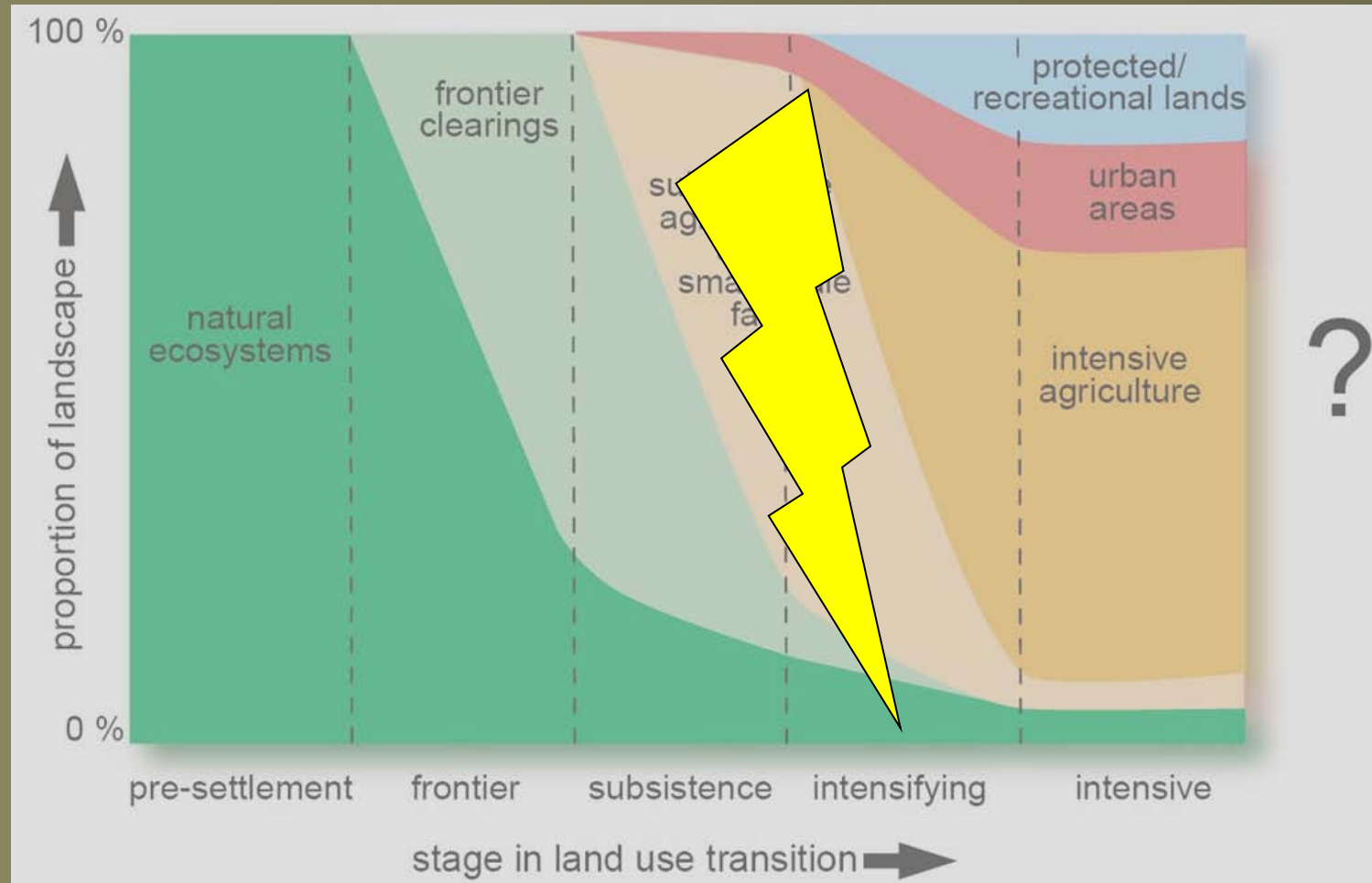
Volker C. Radeloff, C. Alcantara, L. Baskin, O. Chaskovskyy,
M. Dubinin, P. Hostert, J. Knorn, J. Kozak, I. Kruhlov, T. Kuemmerle,
A. Lushchekina, D. Mueller, K. Perzanowski, A. Prishchepov, A. Rabe
Kirsten de Beurs, G. Henebry, G. Ioffe, T. Nefedova
Mutlu Ozdogan, D. Aksenov, M. Baumann, A. Jaroshenko, K. Wendland



Introduction

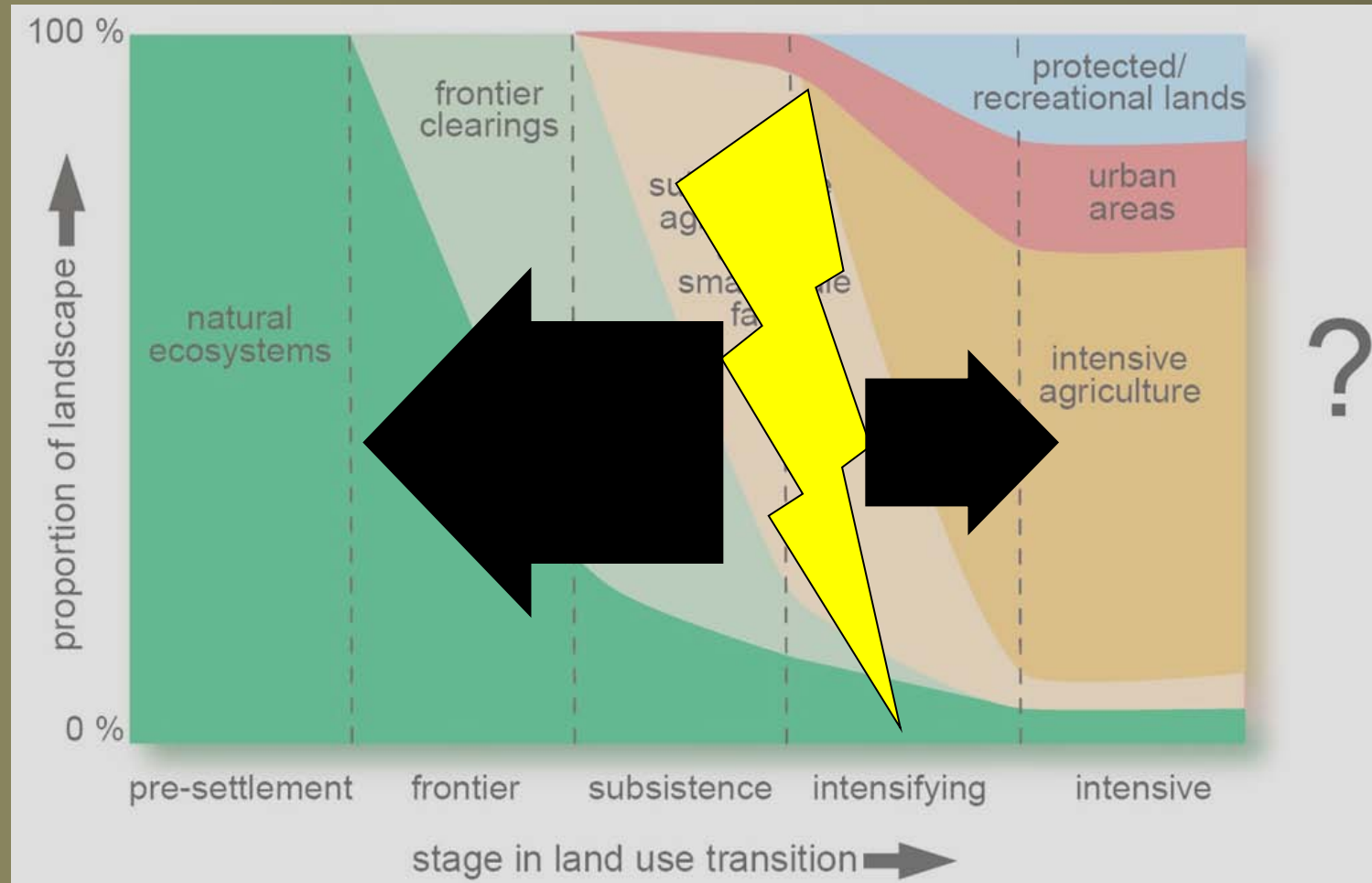


Introduction

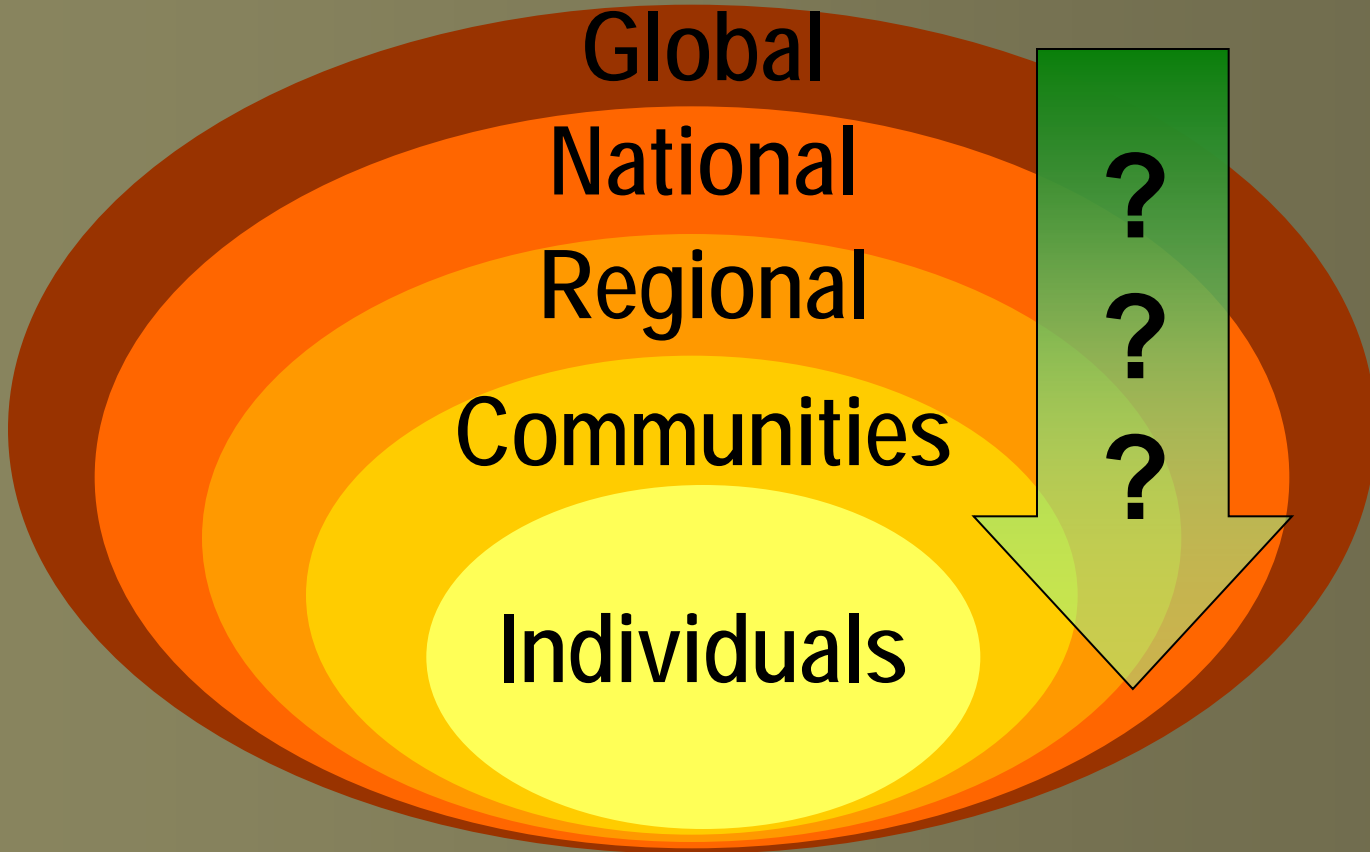




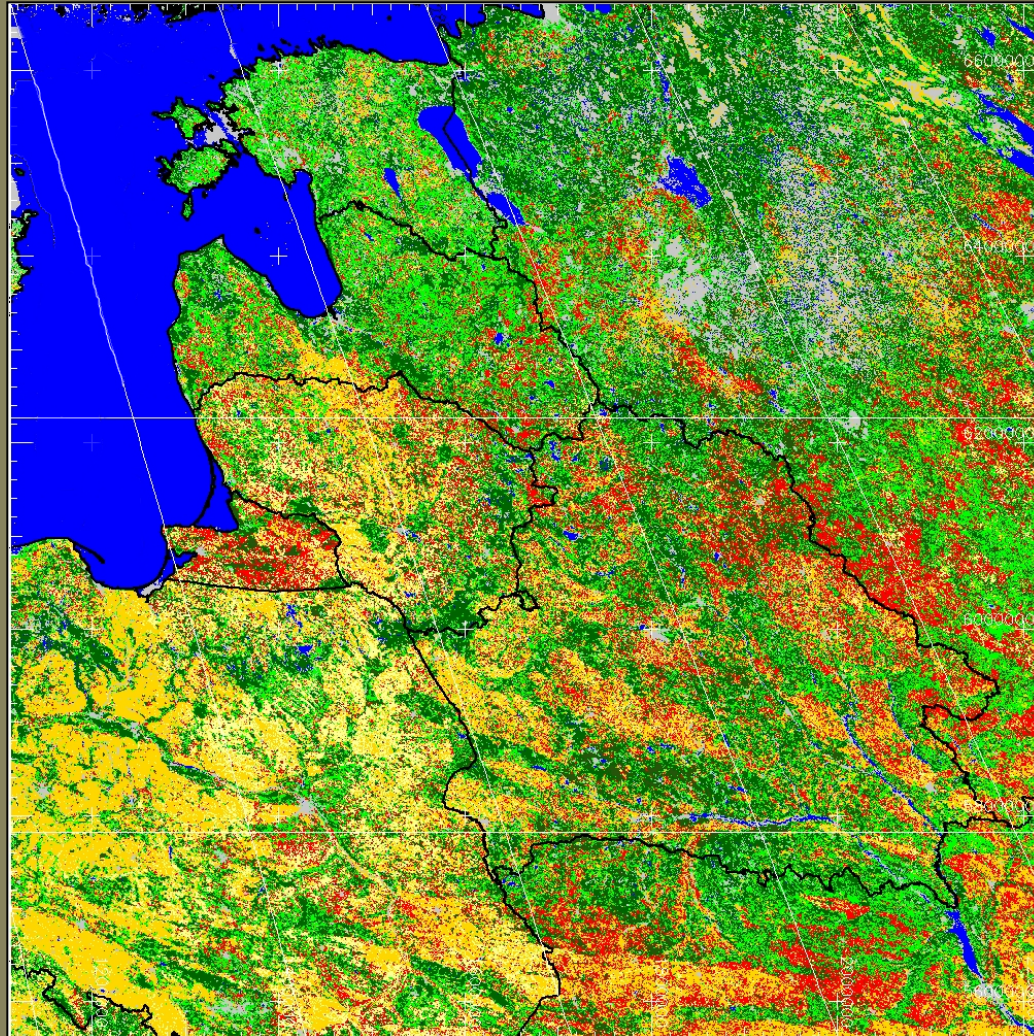
Introduction



Introduction



Introduction



Introduction



Outline

- 1. Institutional changes*
- 2. Farmland abandonment*
- 3. Logging*



Outline

- 1. Institutional changes***
- 2. Farmland abandonment***
- 3. Logging***

Institutional changes



Institutional changes

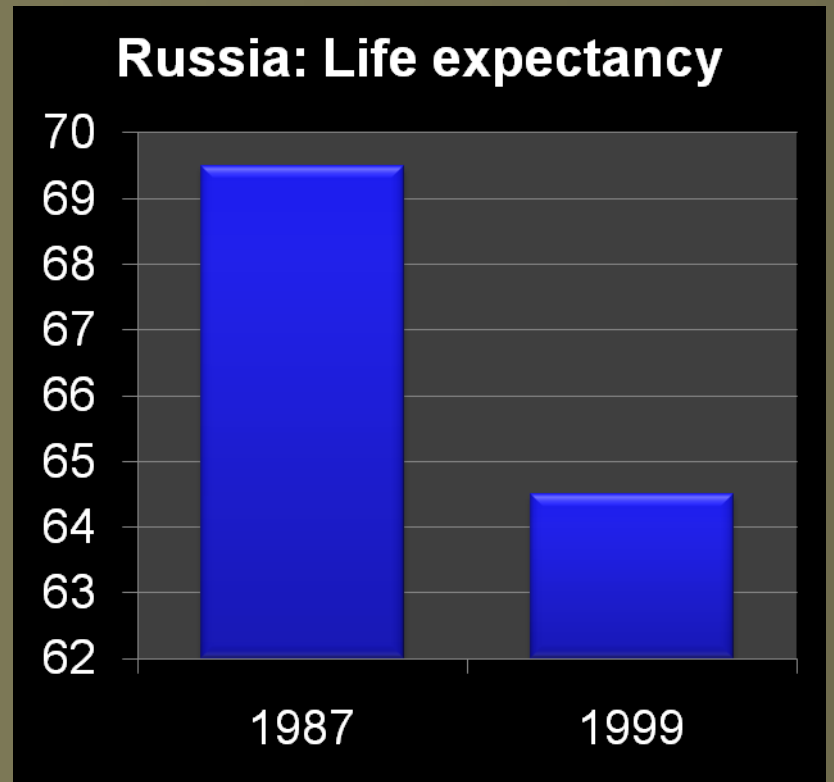
Shock therapy:

- *Open markets*
- *Subsidy cuts*
- *Privatization*

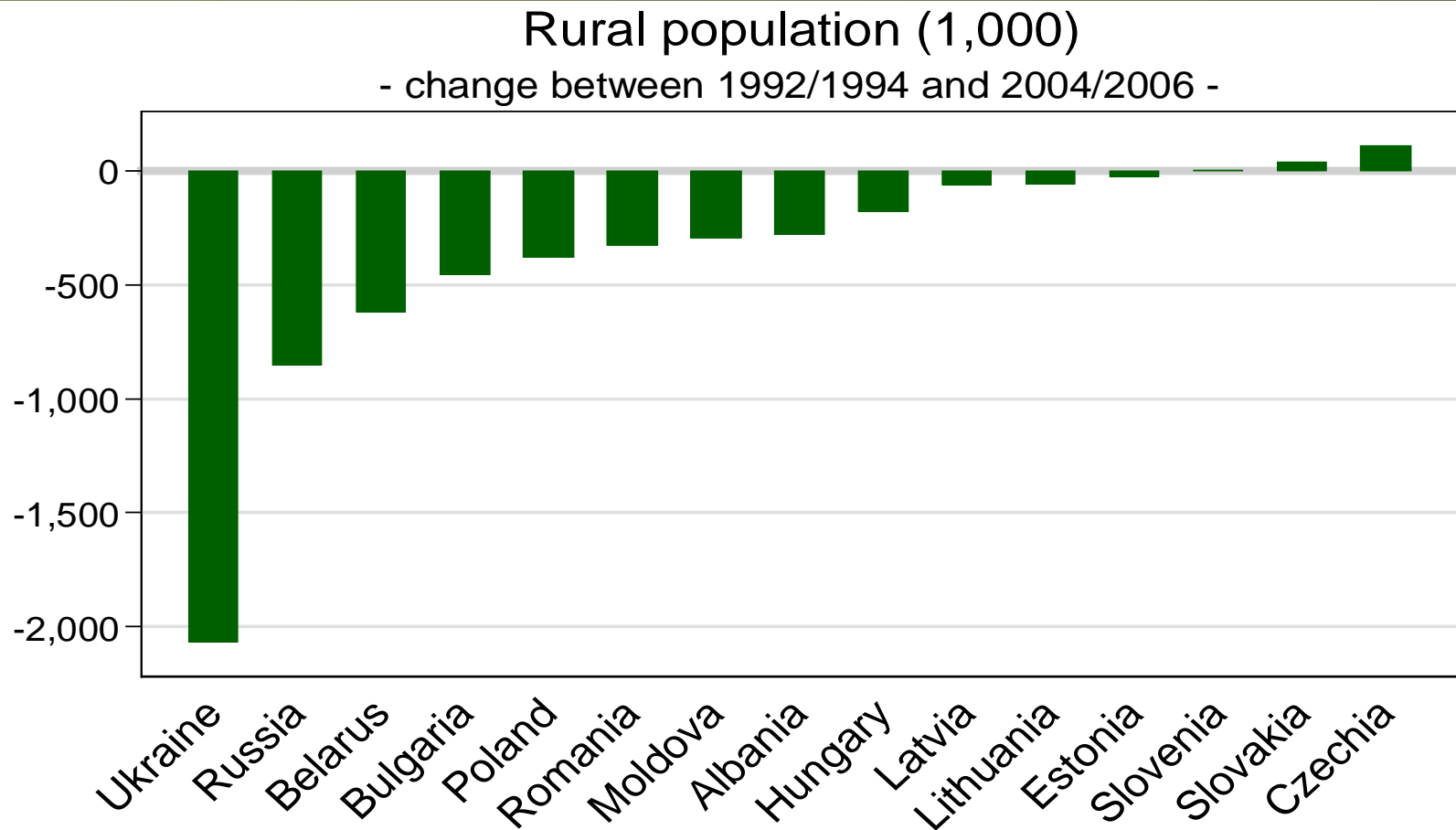
Institutional changes



Institutional changes

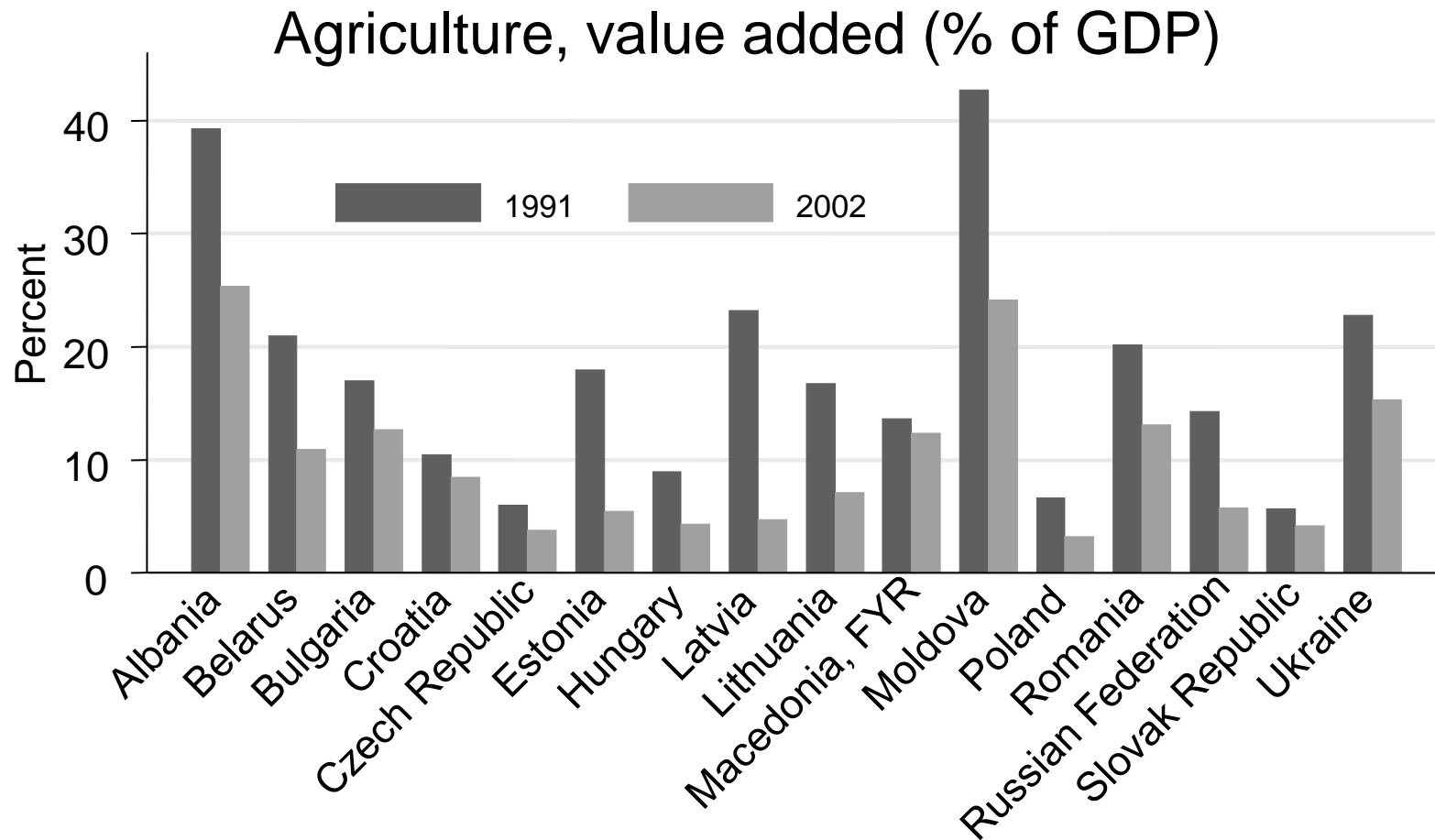


Institutional changes



Source: World Development Indicators 2008

Institutional changes



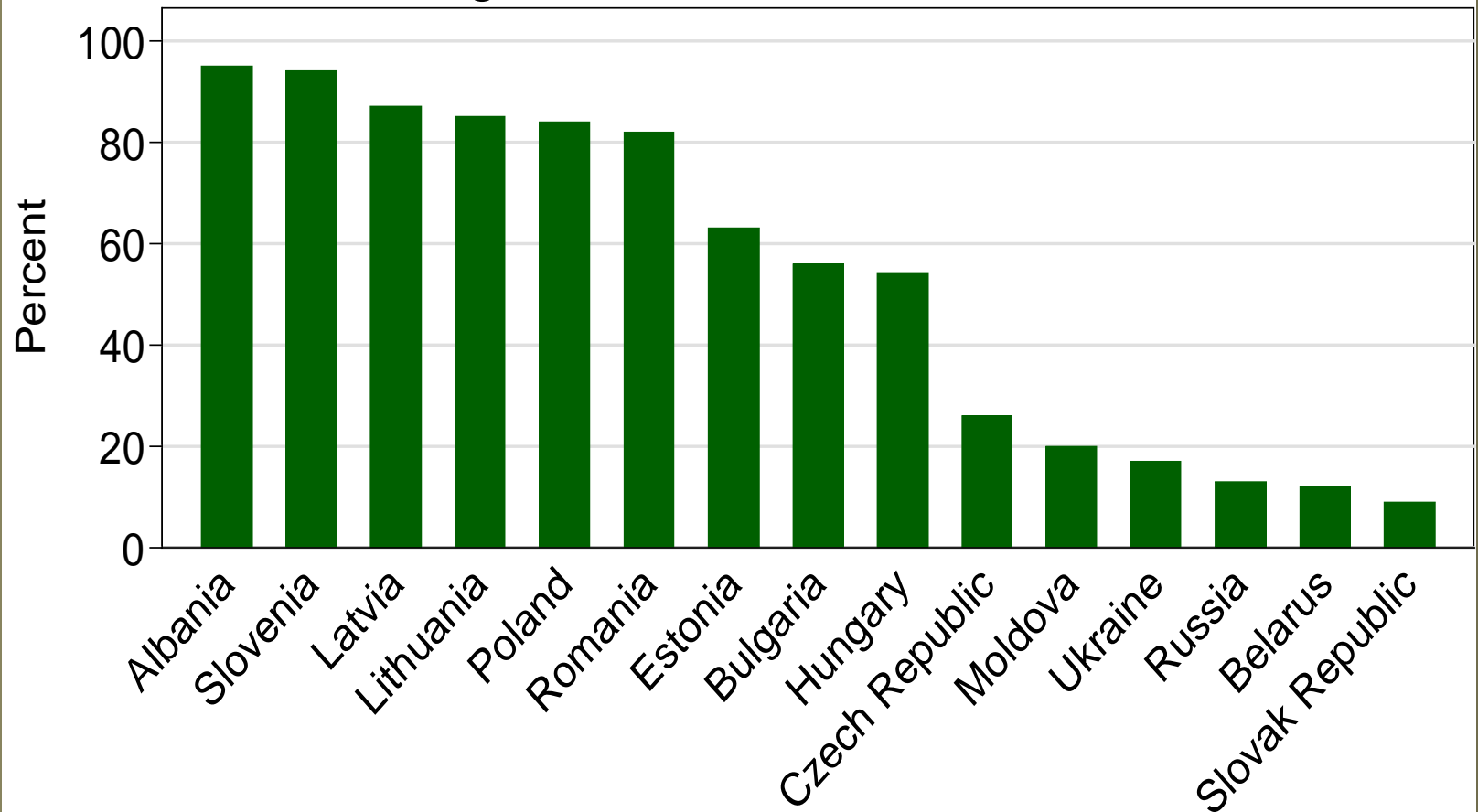
Source: World Development Indicators 2004

Institutional changes

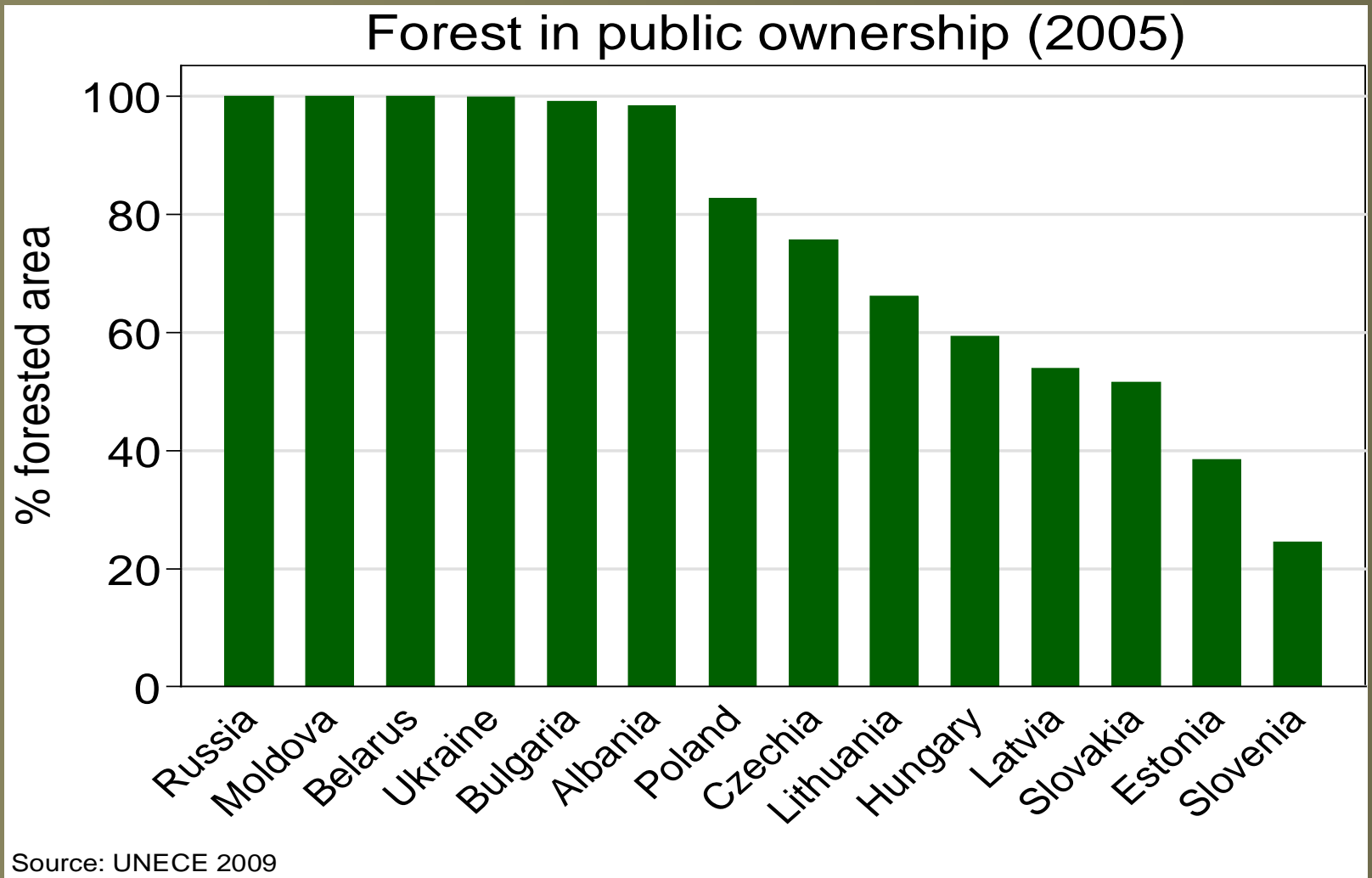
Country	Privatization strategy
Albania	Distribution
Baltics	Restitution
Czechia	Restitution
Hungary	Restitution, distribution, voucher
Poland	Auction
Romania	Restitution, distribution
Slovakia	Restitution
European CIS	Share distribution

Institutional changes

Share of agricultural land in individual use, 2000



Institutional changes



Institutional changes



Outline

1. Institutional changes

2. Farmland abandonment

3. Logging

Farmland abandonment

Land Abandonment in Russia: Understanding Recent Trends and Assessing Future Vulnerability and Adaptation to Changing Climate and Population Dynamics

September 1990



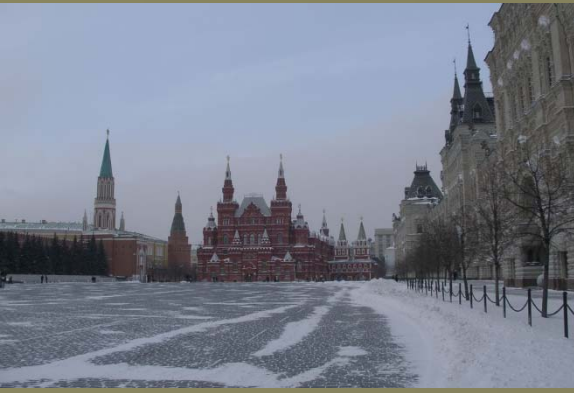
September 2000



Agricultural de-intensification in Stravropol Kray evident in Landsat TM as substantial reduction in center pivot irrigation

Farmland abandonment

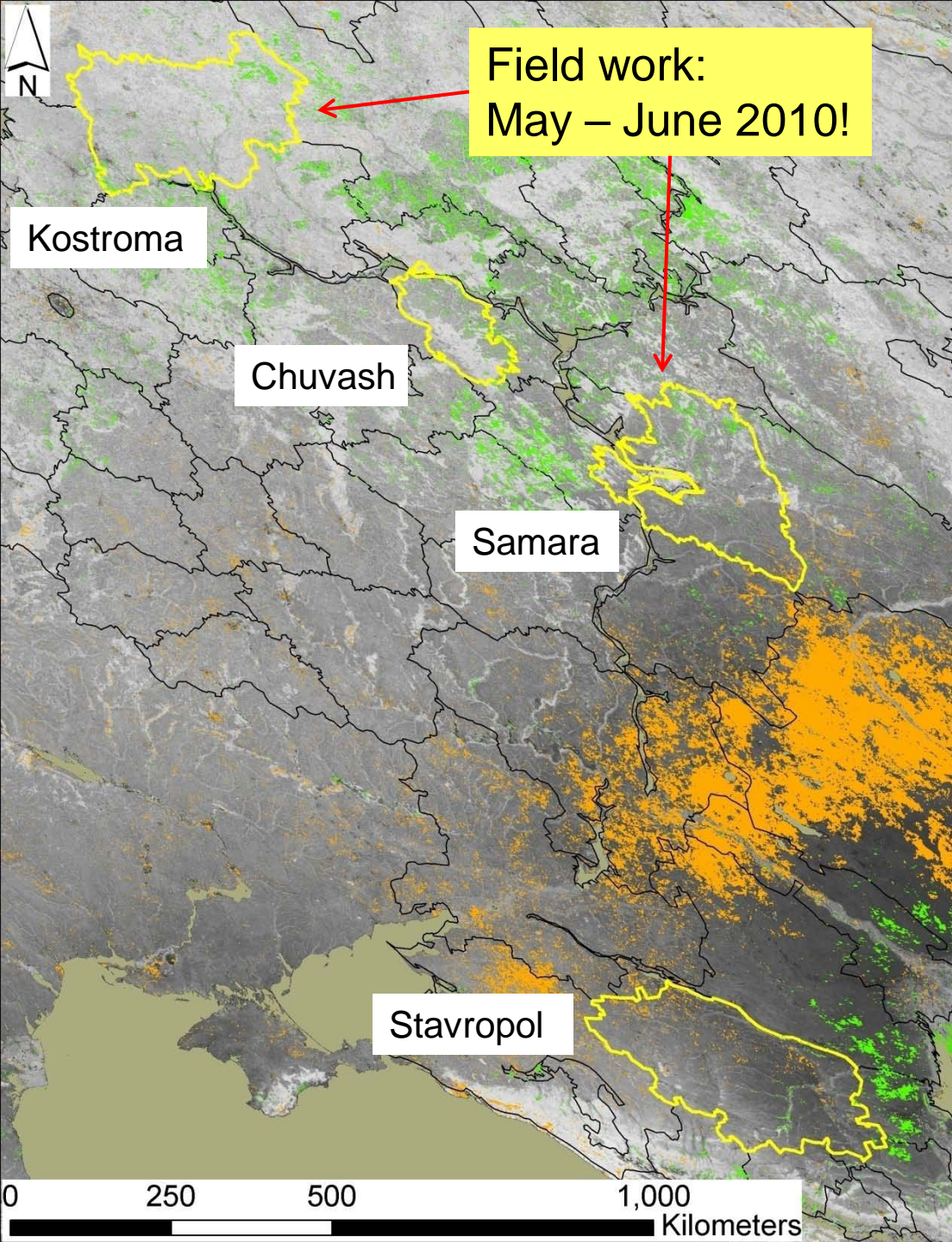
- Land abandonment is not random or unexpected
- Abandonment is preceded by low crop yields and/or declines in rural population density.



North: rural population density driven by **proximity to major cities**.

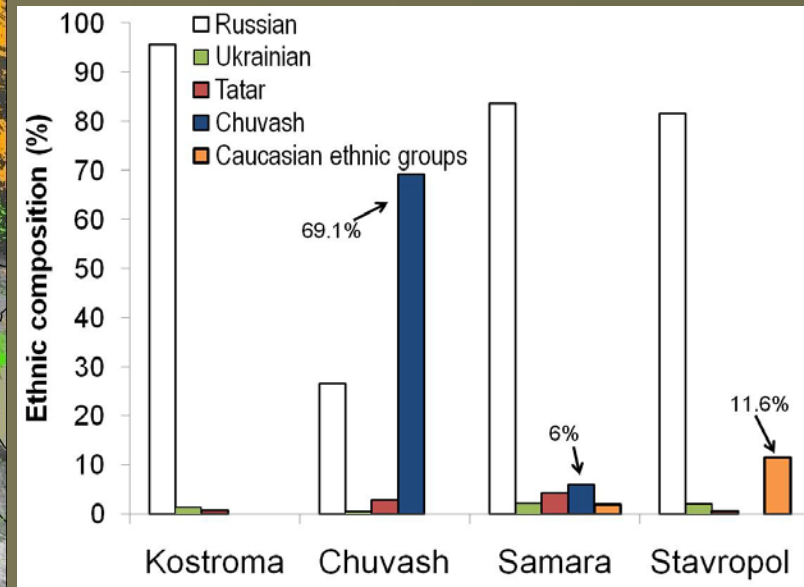


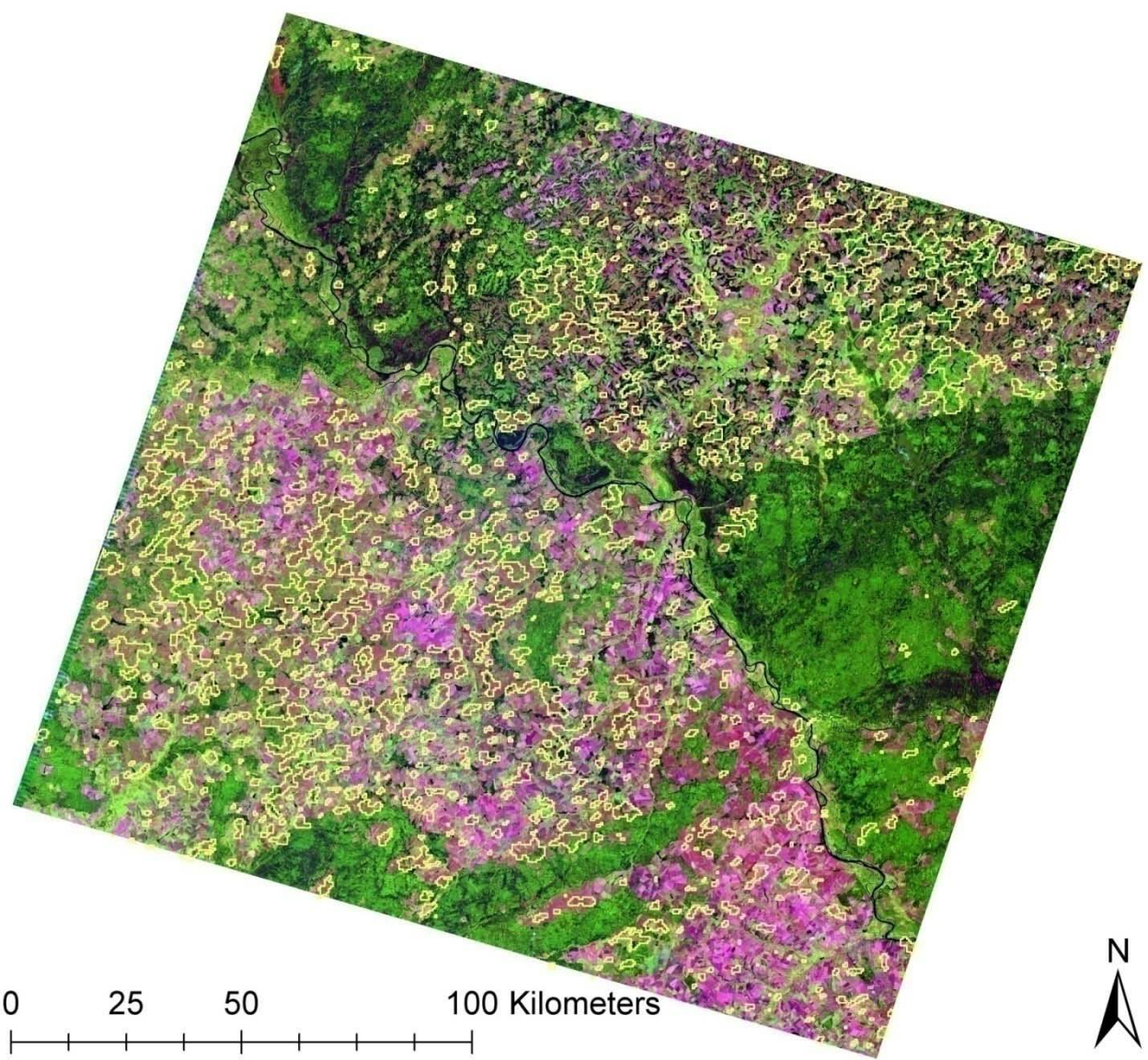
South: rural population density is driven by **soil fertility and proximity to major cities**.



Vegetation trends from 2000 - 2008 revealed by MODIS (500 m resolution)

Population decline is dependent on ethnic composition of the rural population → may indirectly influence land abandonment.





Yellow:

Positive trends are found mainly in croplands and not in other land cover classes.

Greens:

No changes found

- Anthropogenic rather than climatic cause.
- Selected region is characterized by depressed agriculture.
- Succession of weeds, grasses and forbs can lead to increased NDVI.

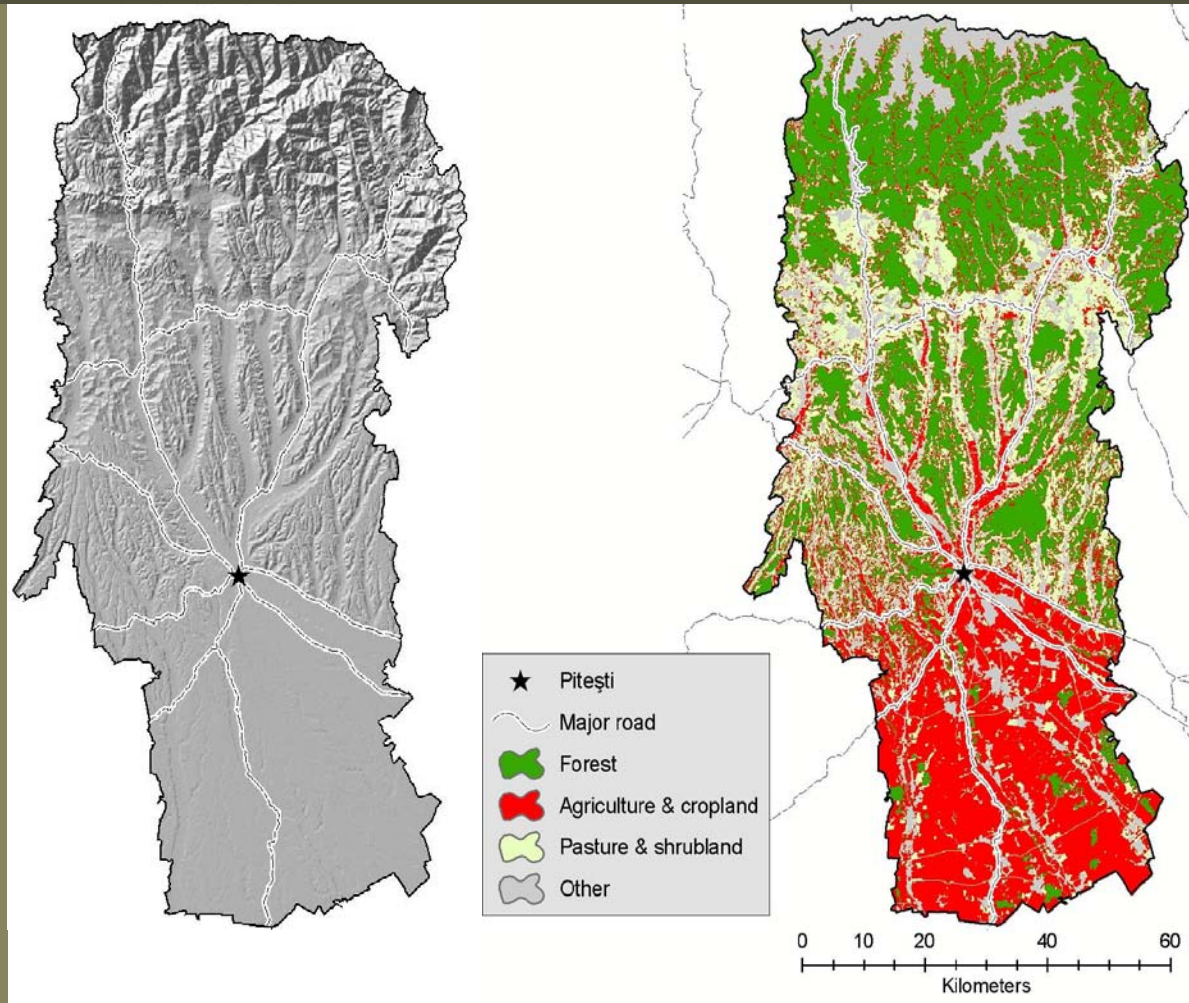
MODIS derived cover data is significant positive trend MODIS 500M MODIS 500m

data de Barros, K.M., Wright, C.K., Henebry, G.M. 2009. Dual scale trend analysis distinguishes climatic from anthropogenic effects on the vegetated land surface. *Environmental Research Letters*, 4 045012.

Farmland abandonment



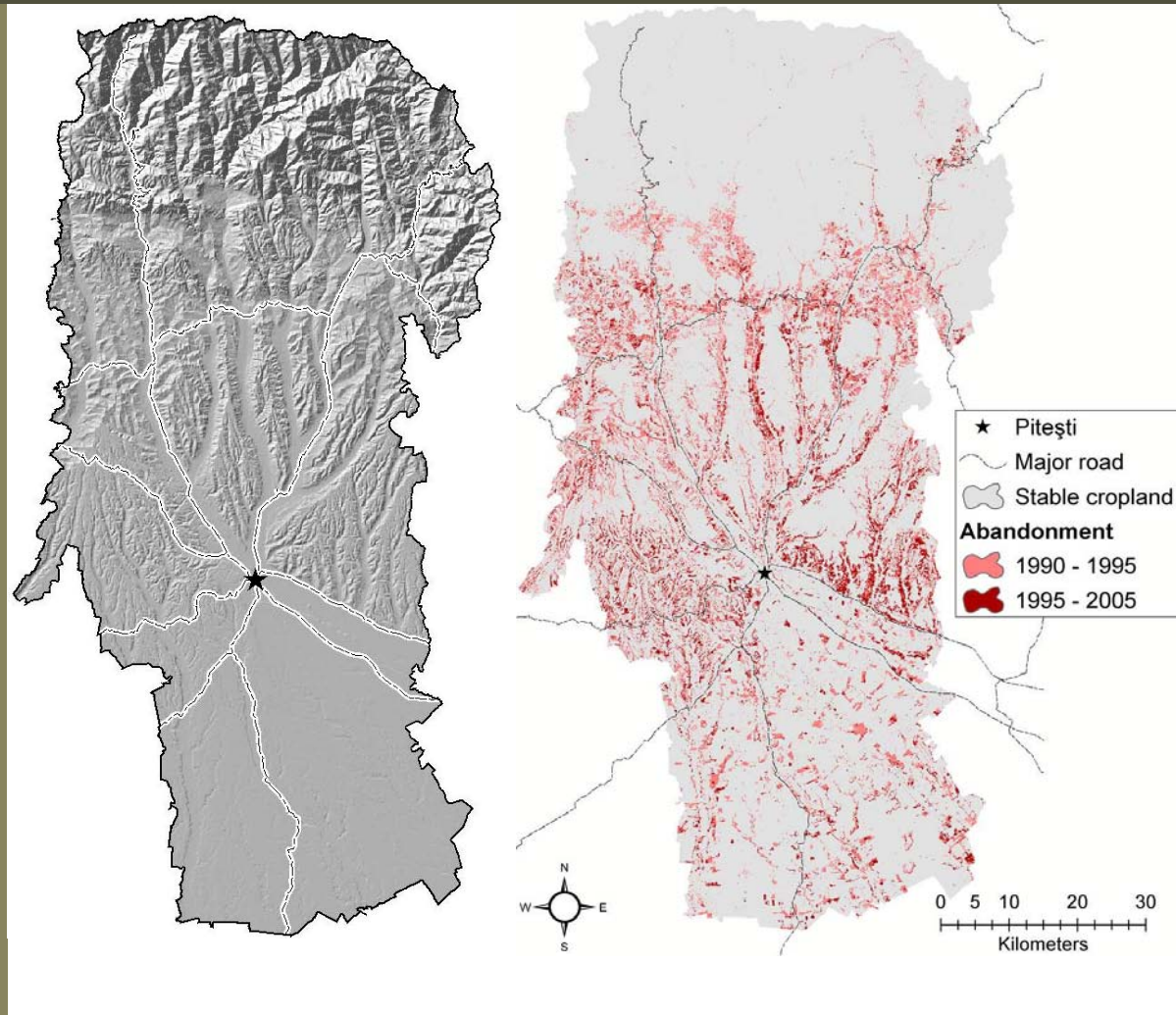
Farmland abandonment



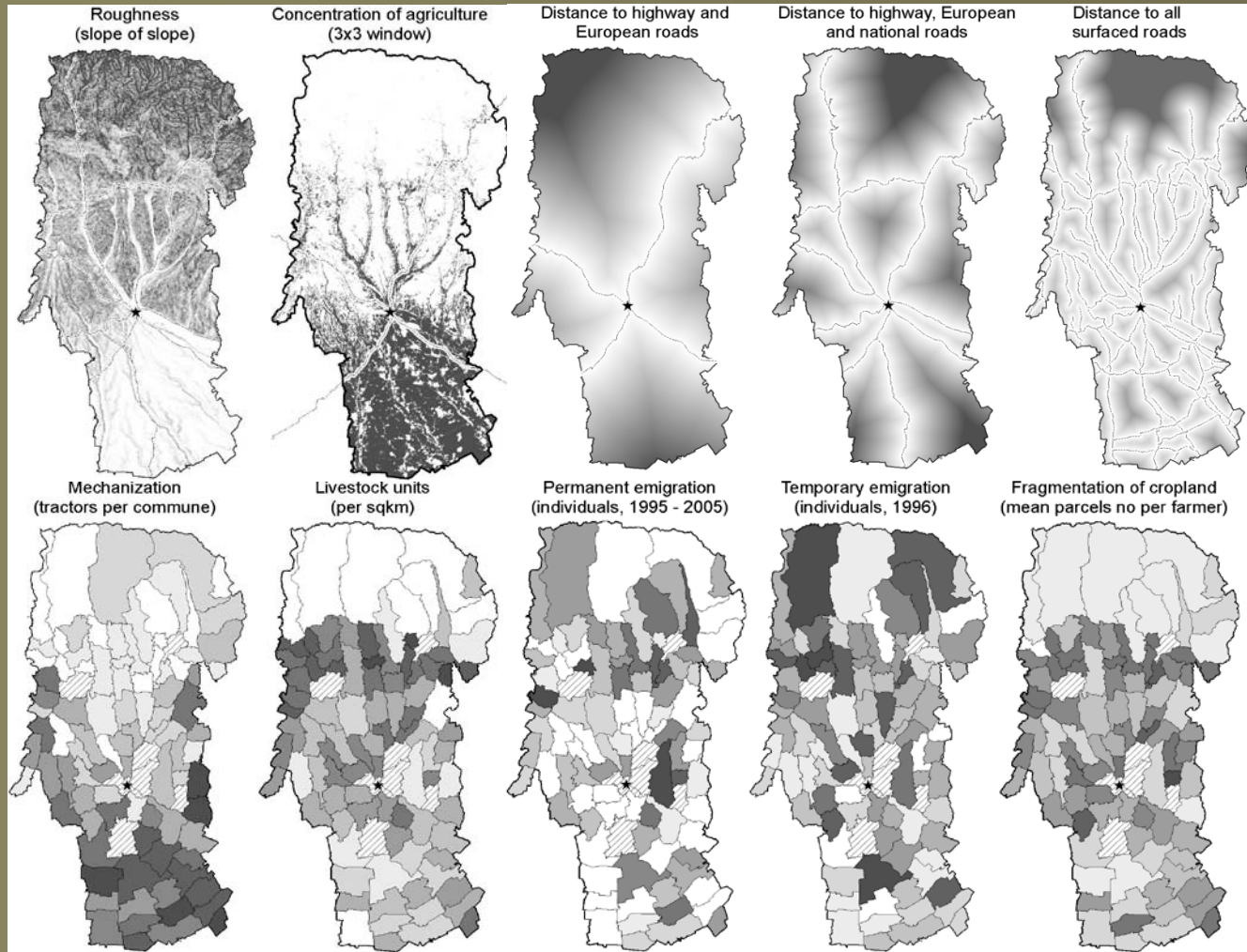
Farmland abandonment



Farmland abandonment



Farmland abandonment

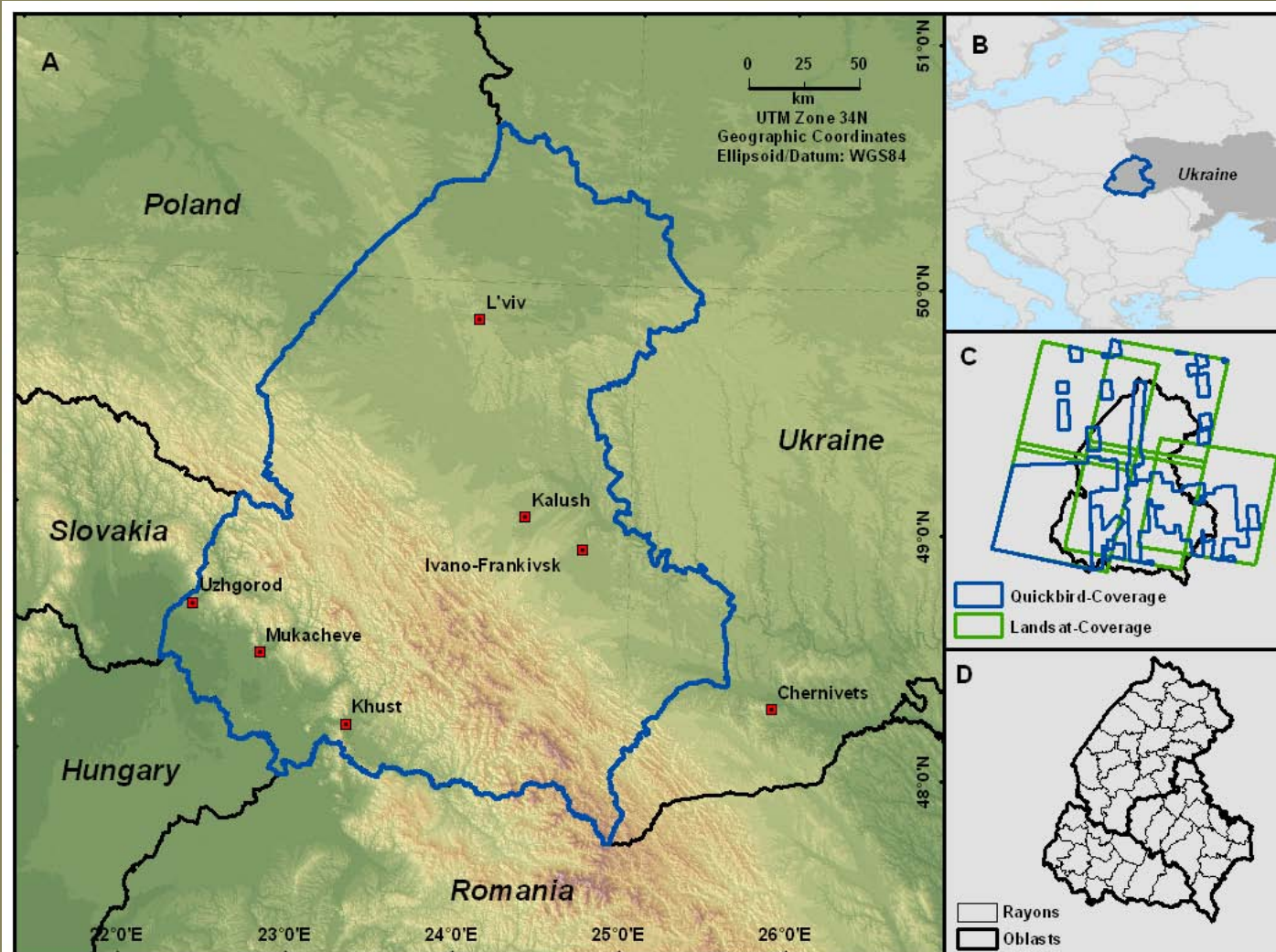


Farmland abandonment

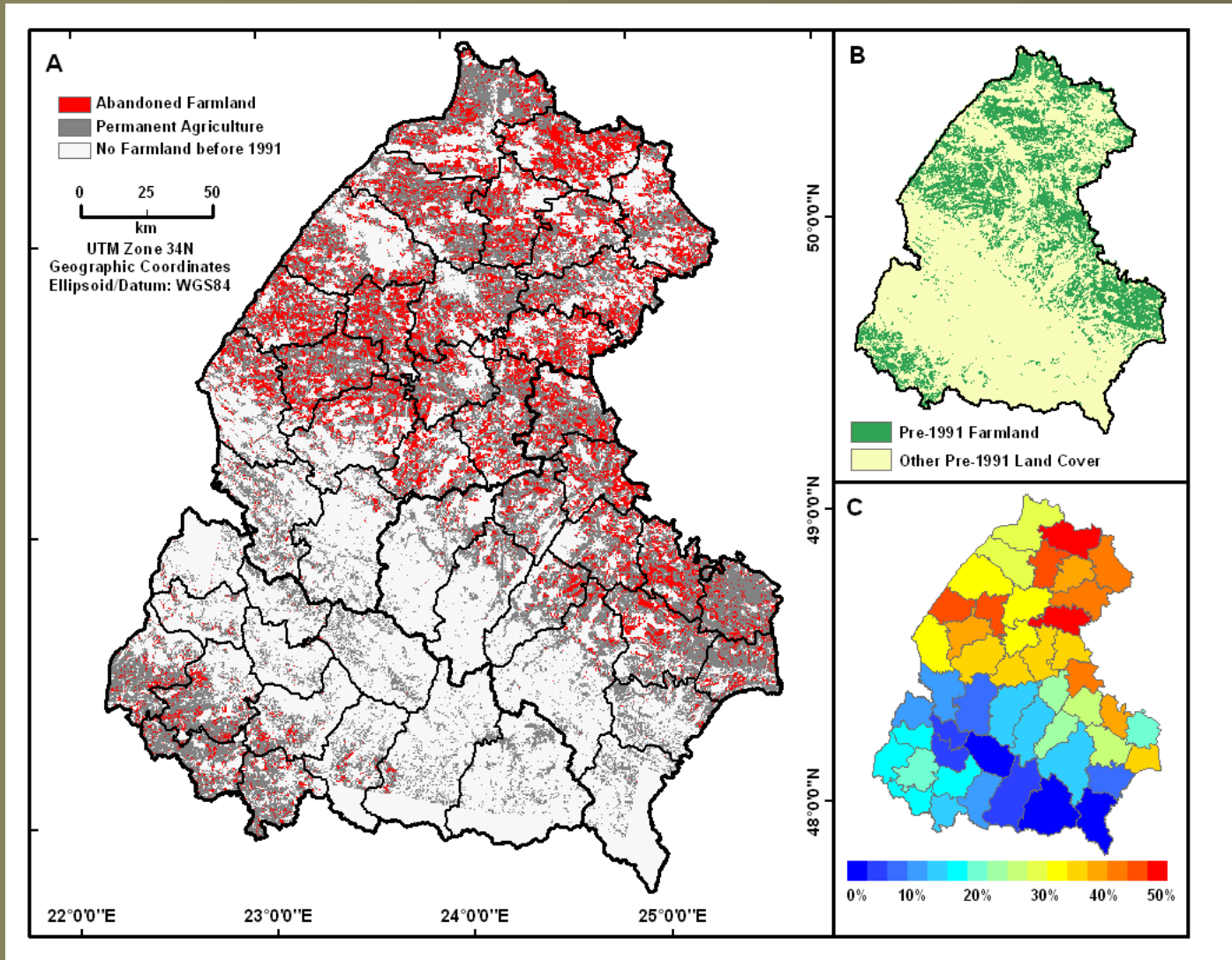
Highest abandonment rates:

- *In steep terrain*
- *On isolated fields*
- *Afar from roads*

Farmland abandonment



Farmland abandonment

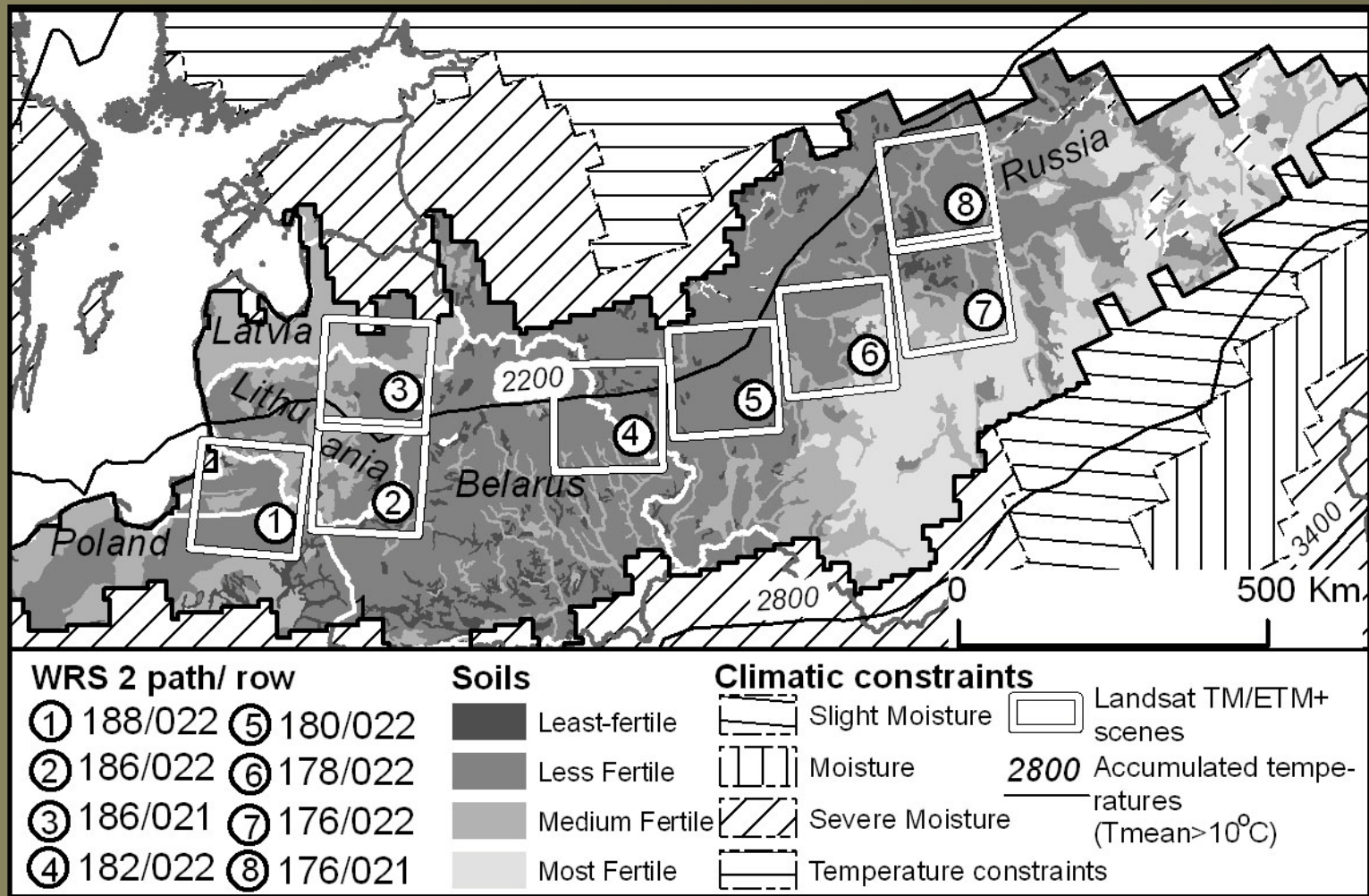


Farmland abandonment

Highest abandonment rates:

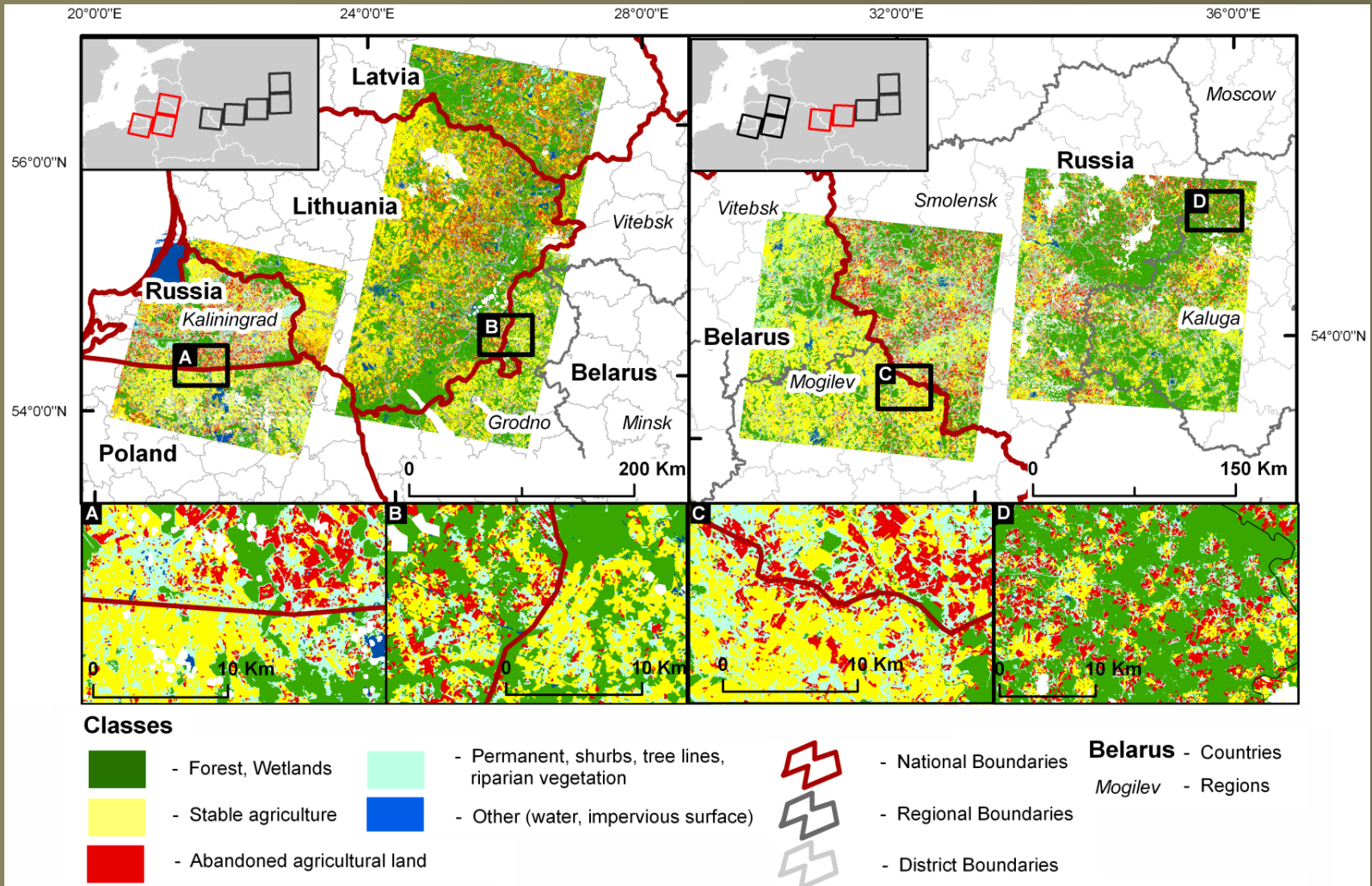
- *Closer to cities*
- *At lower elevations*
- *On flatter slopes*
- *??????*

Farmland abandonment

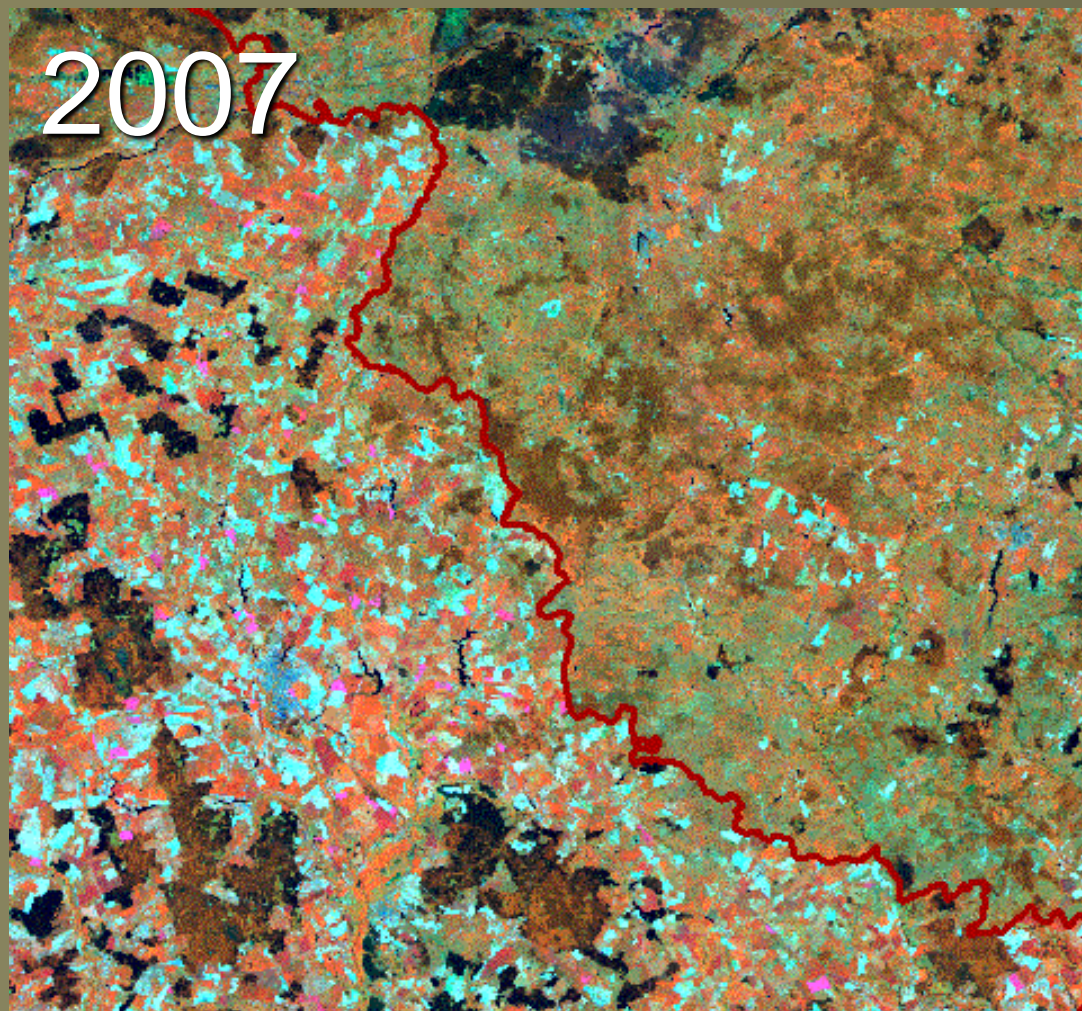


Prishchepov et al., see poster

Farmland abandonment

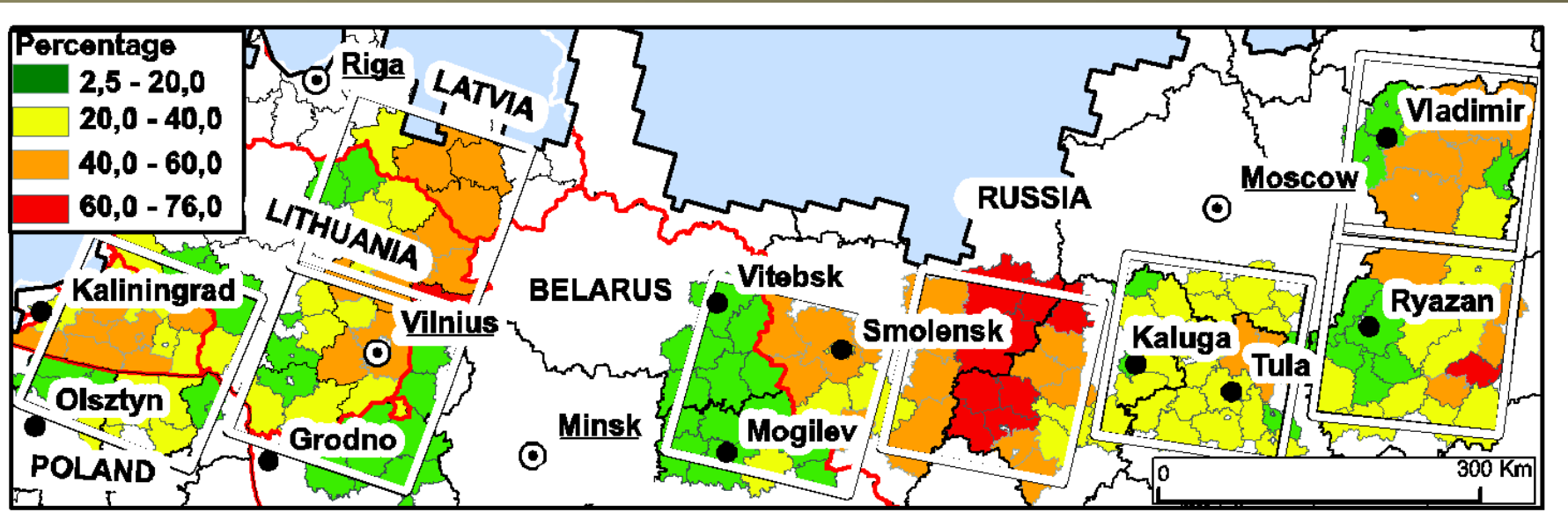


Farmland abandonment

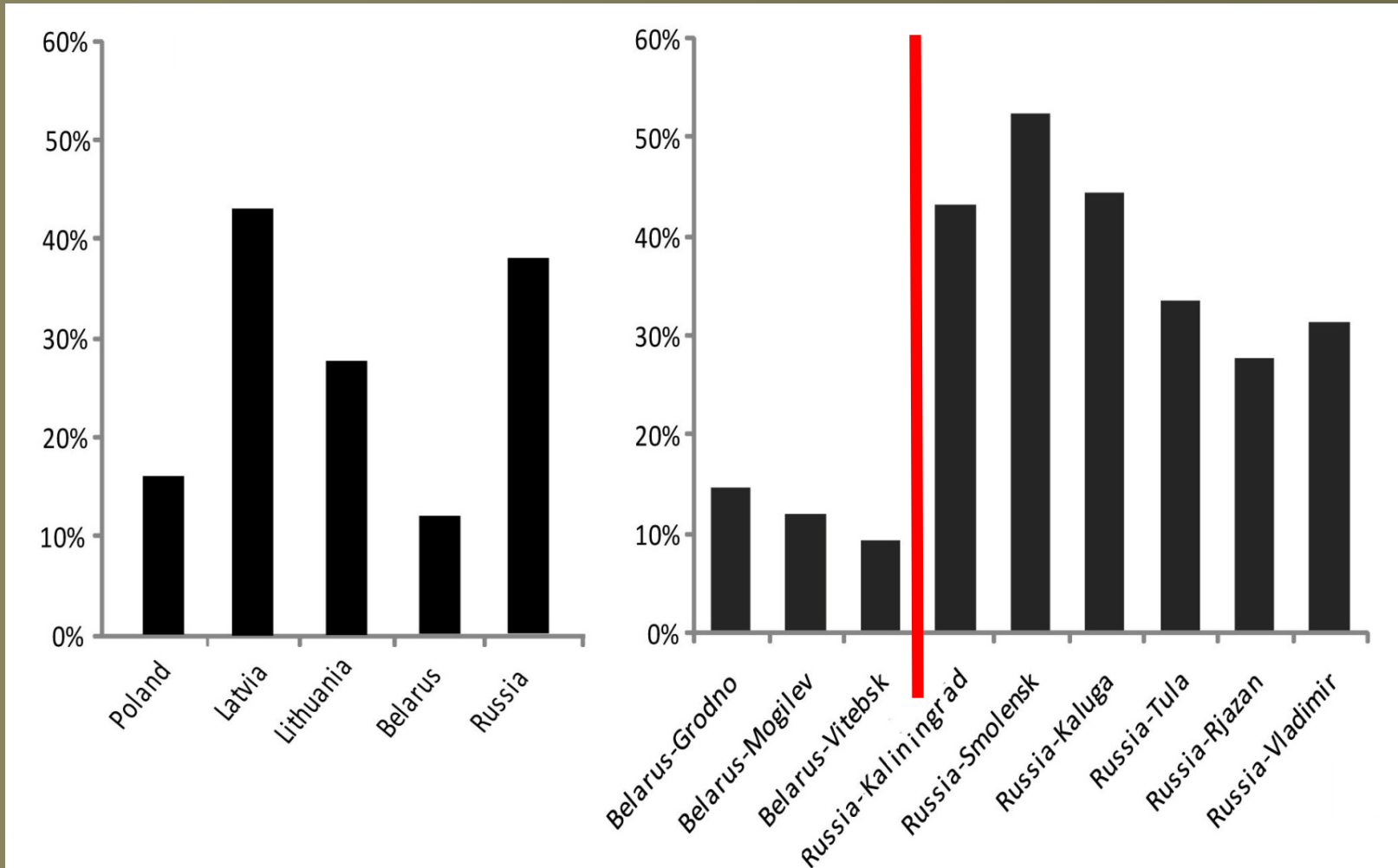


Prishchepov et al., *see poster*

Farmland abandonment



Farmland abandonment



Prishchepov et al., see poster



Outline

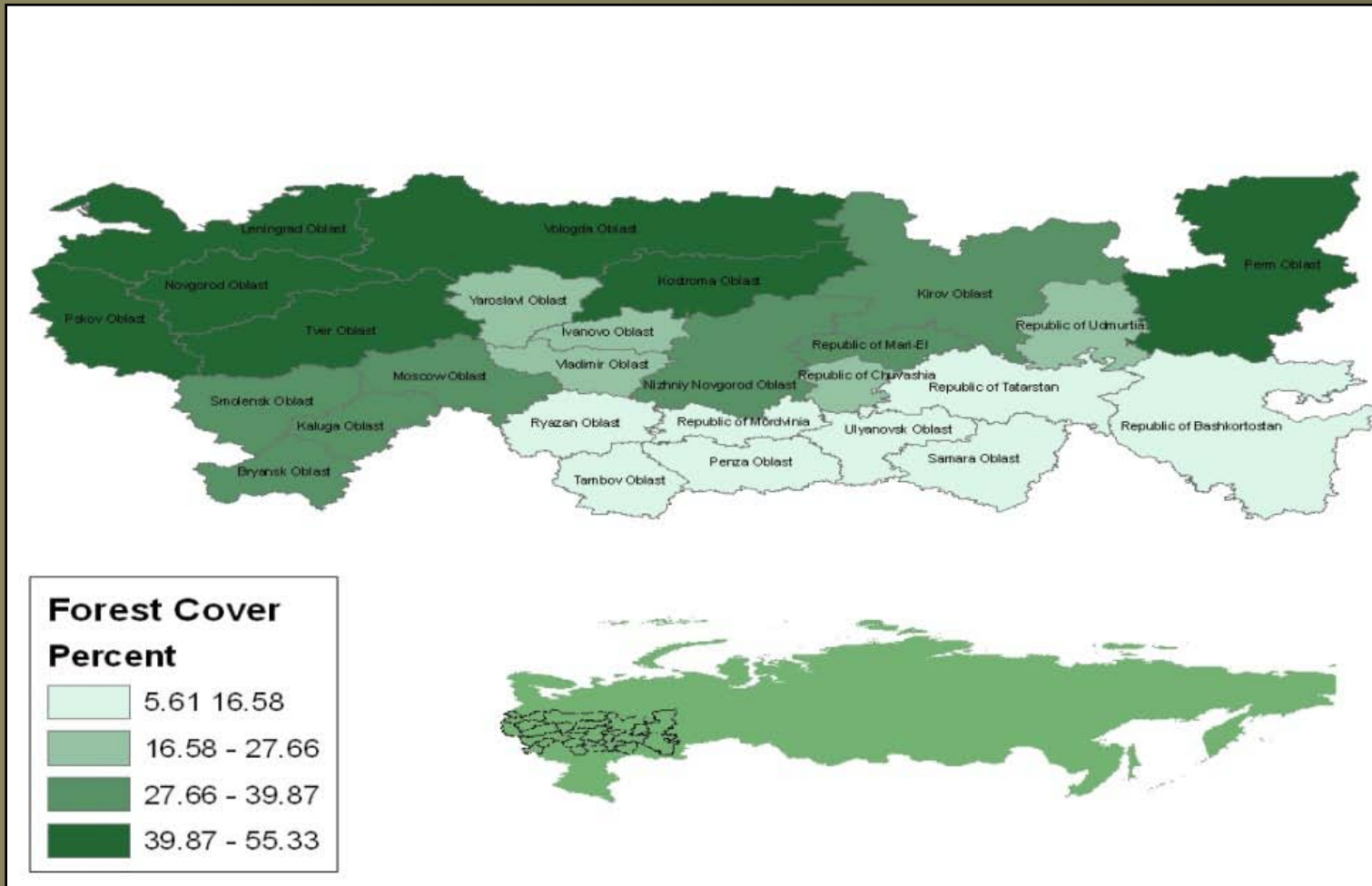
- 1. Institutional changes*
- 2. Farmland abandonment*
- 3. Logging*

Logging

Land-Use And Land-Cover Changes In Temperate Forests Of European Russia

- Past and current rates of LCLUC in European Russia?
- How to monitor forest dynamics with MDGLS and Landsat-like datasets (e.g. AWiFS)?
- Socio-economic drivers of forest harvest?
- Can satellite classifications and socio-economic variables predict future harvest rates?

Logging

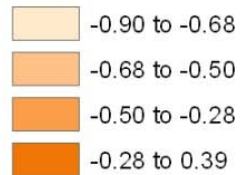


Wendland et al., see poster

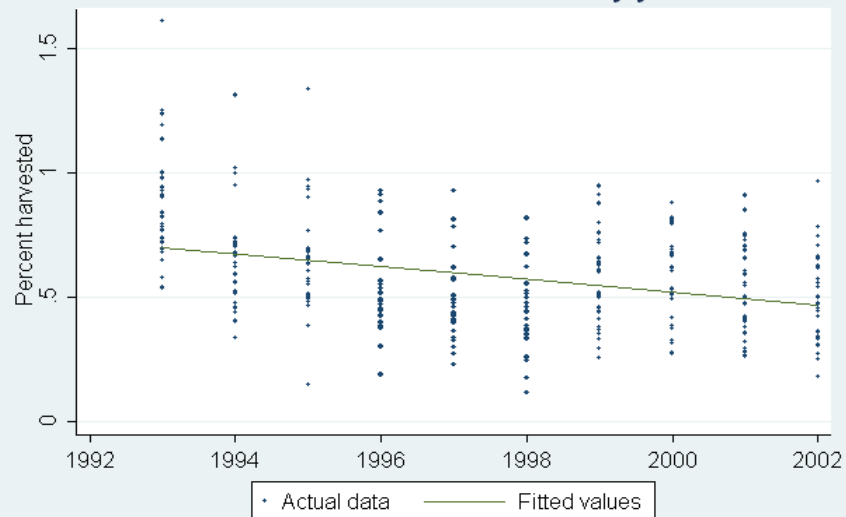
Logging



Change in percent harvested



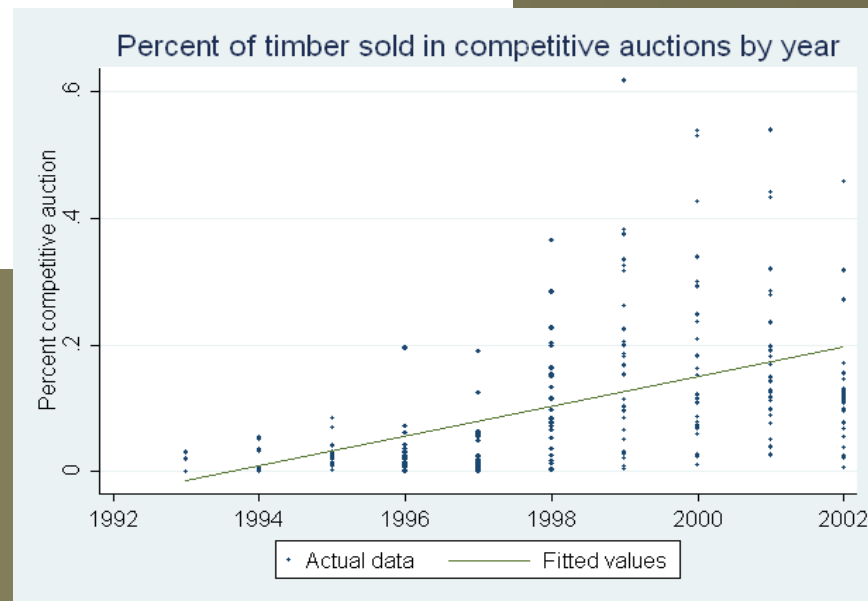
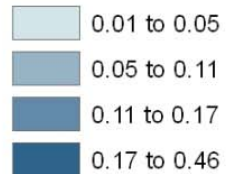
Percent of timber harvested by year



Logging

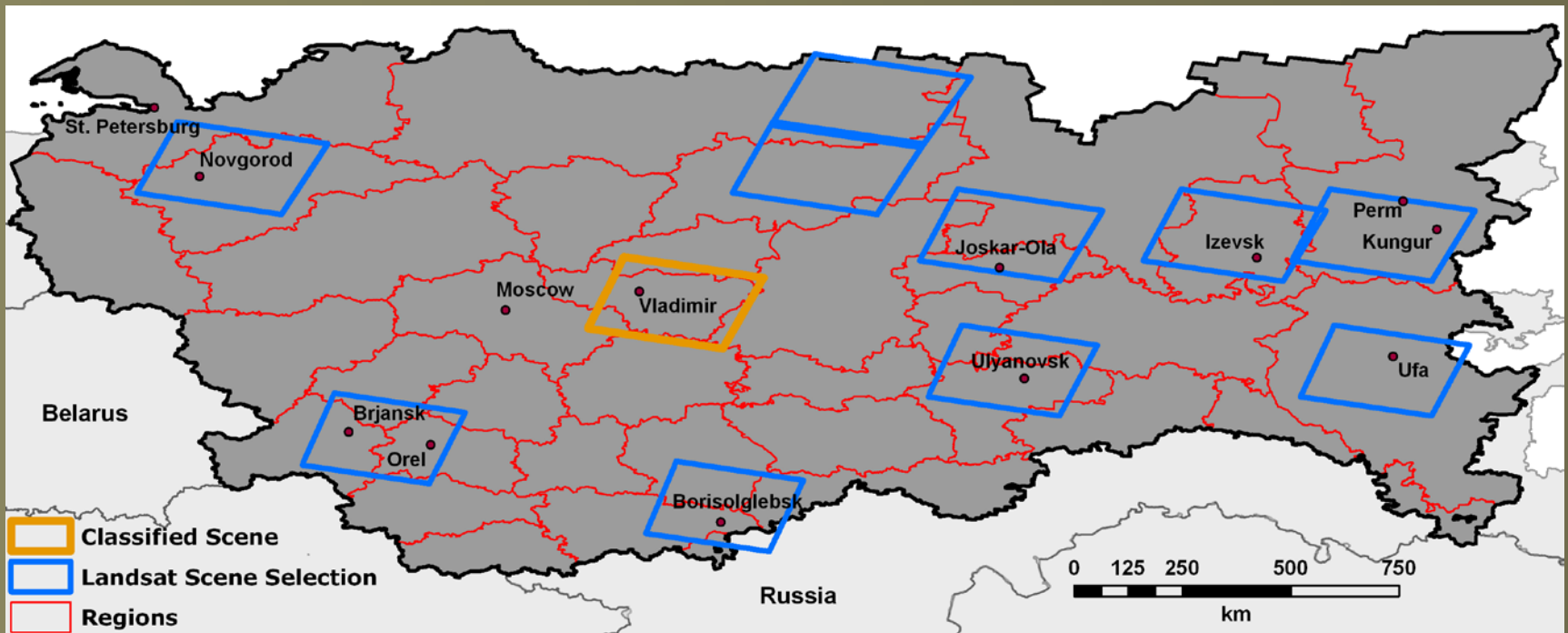


Change in percent auctioned

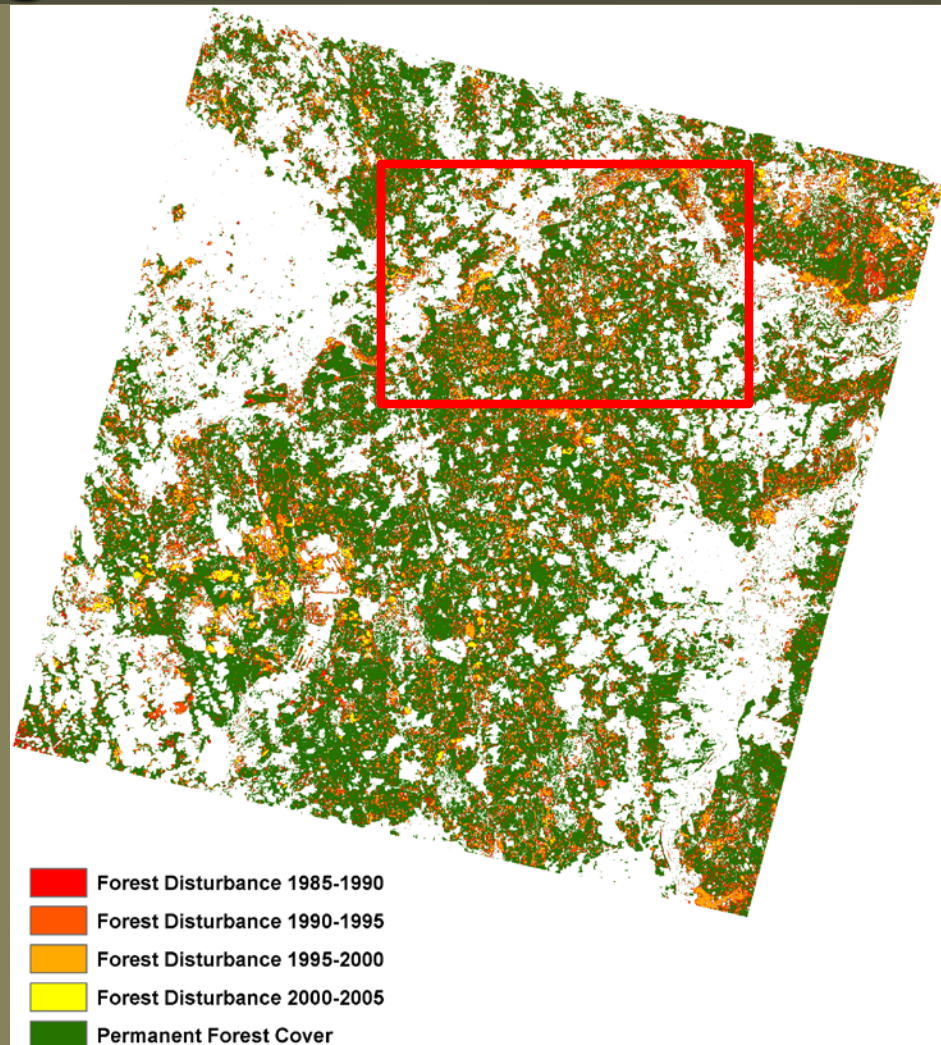


Wendland et al., see poster

Logging

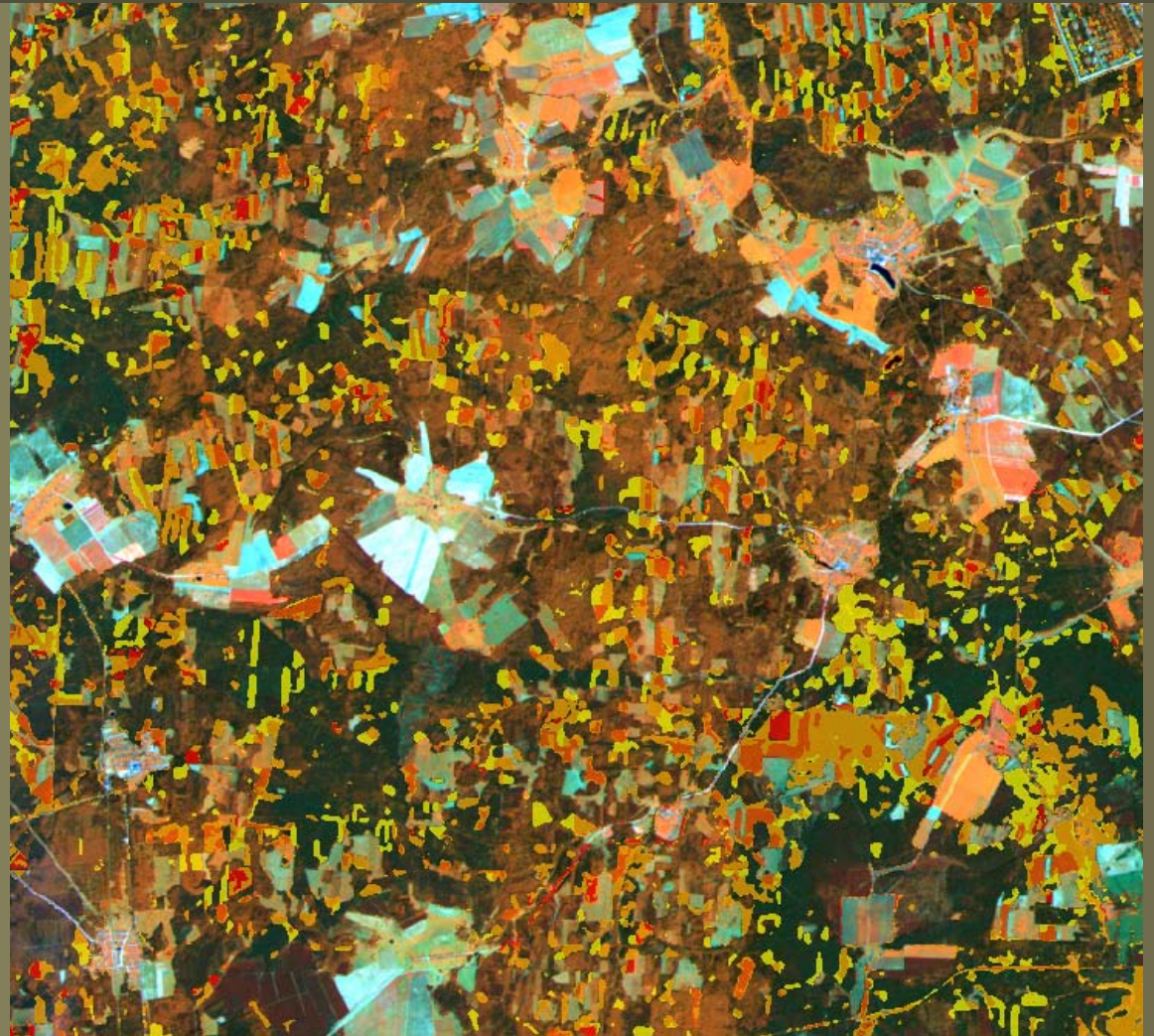
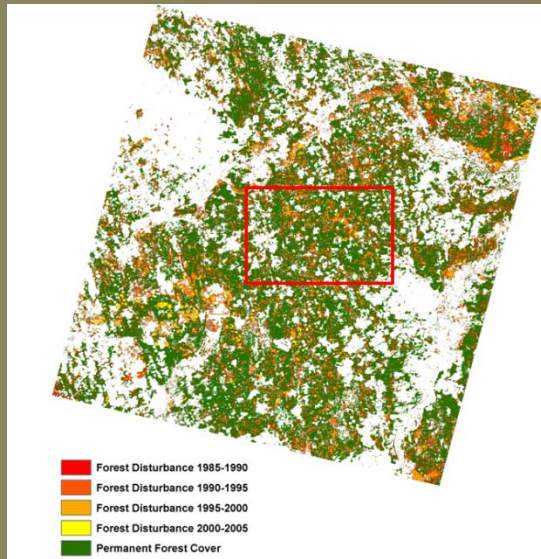


Logging



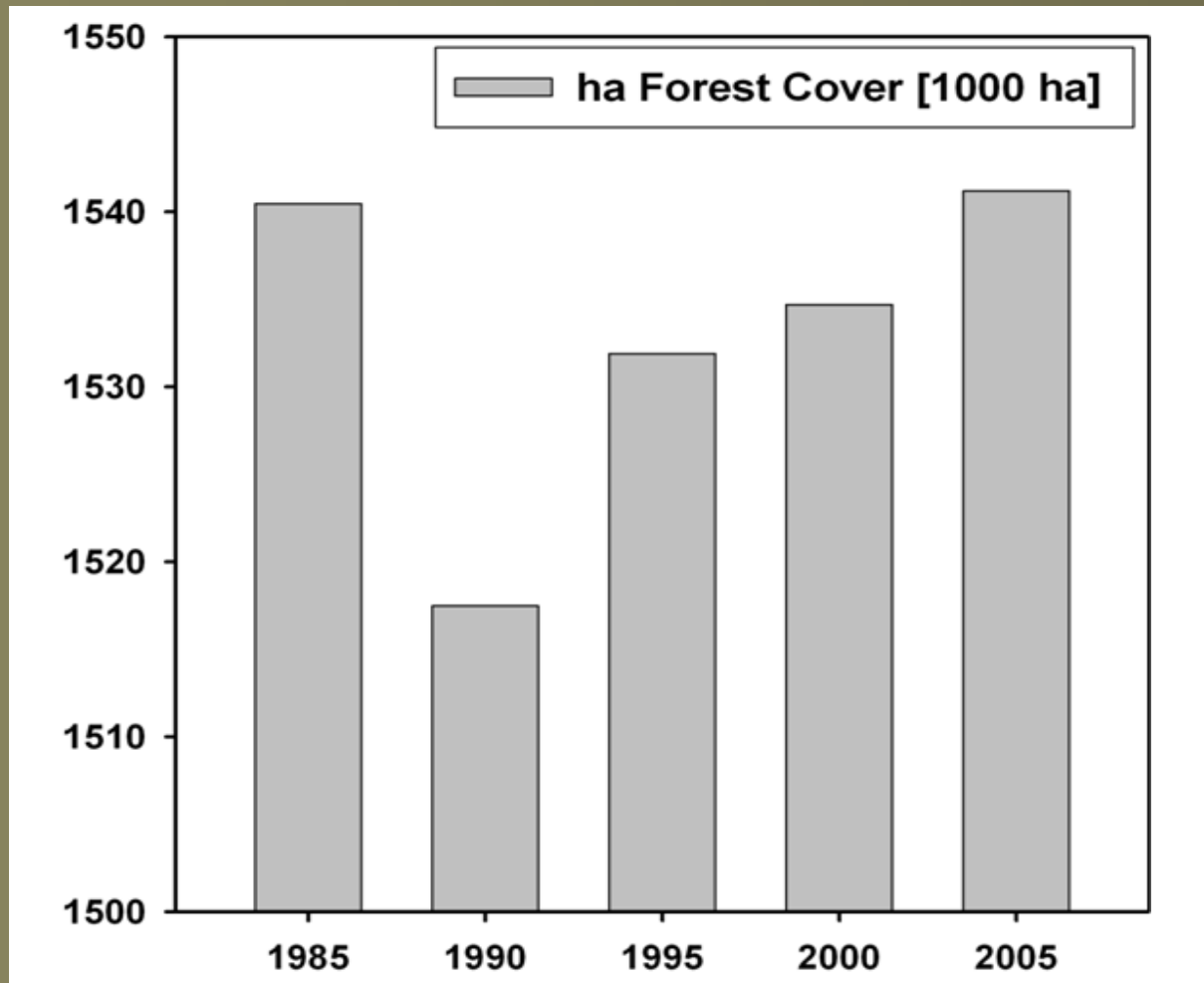
Baumann et al., *see poster*

Logging



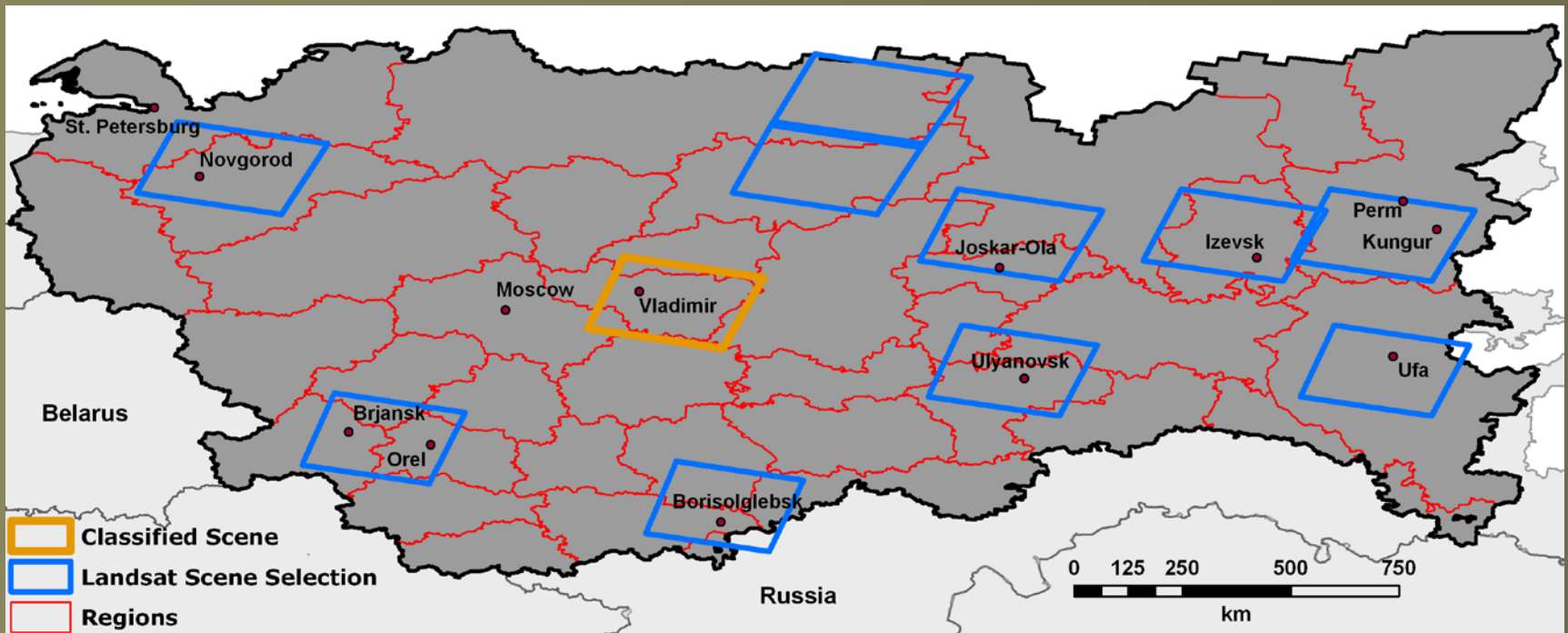
Baumann et al., *see poster*

Logging



Baumann et al., *see poster*

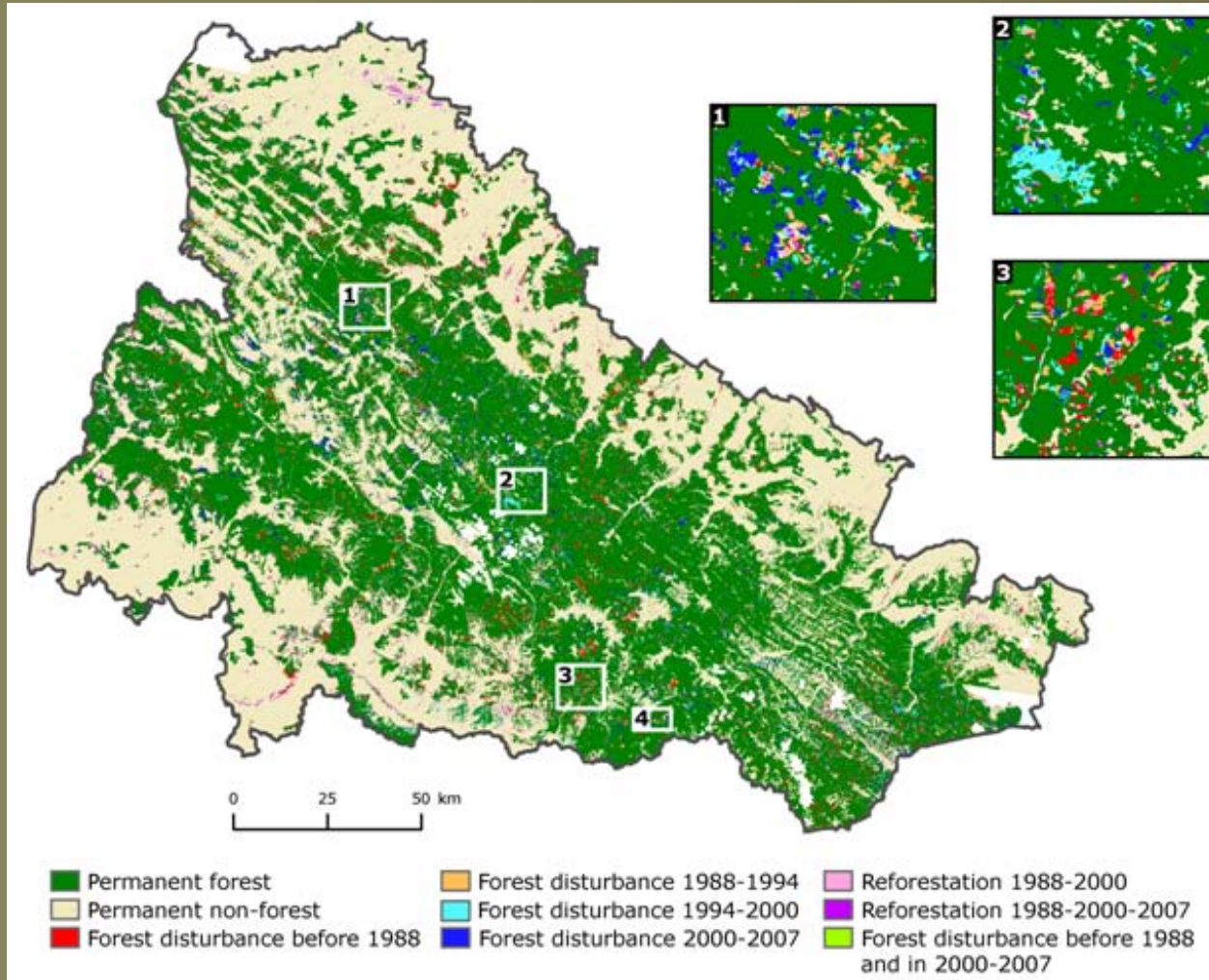
Logging



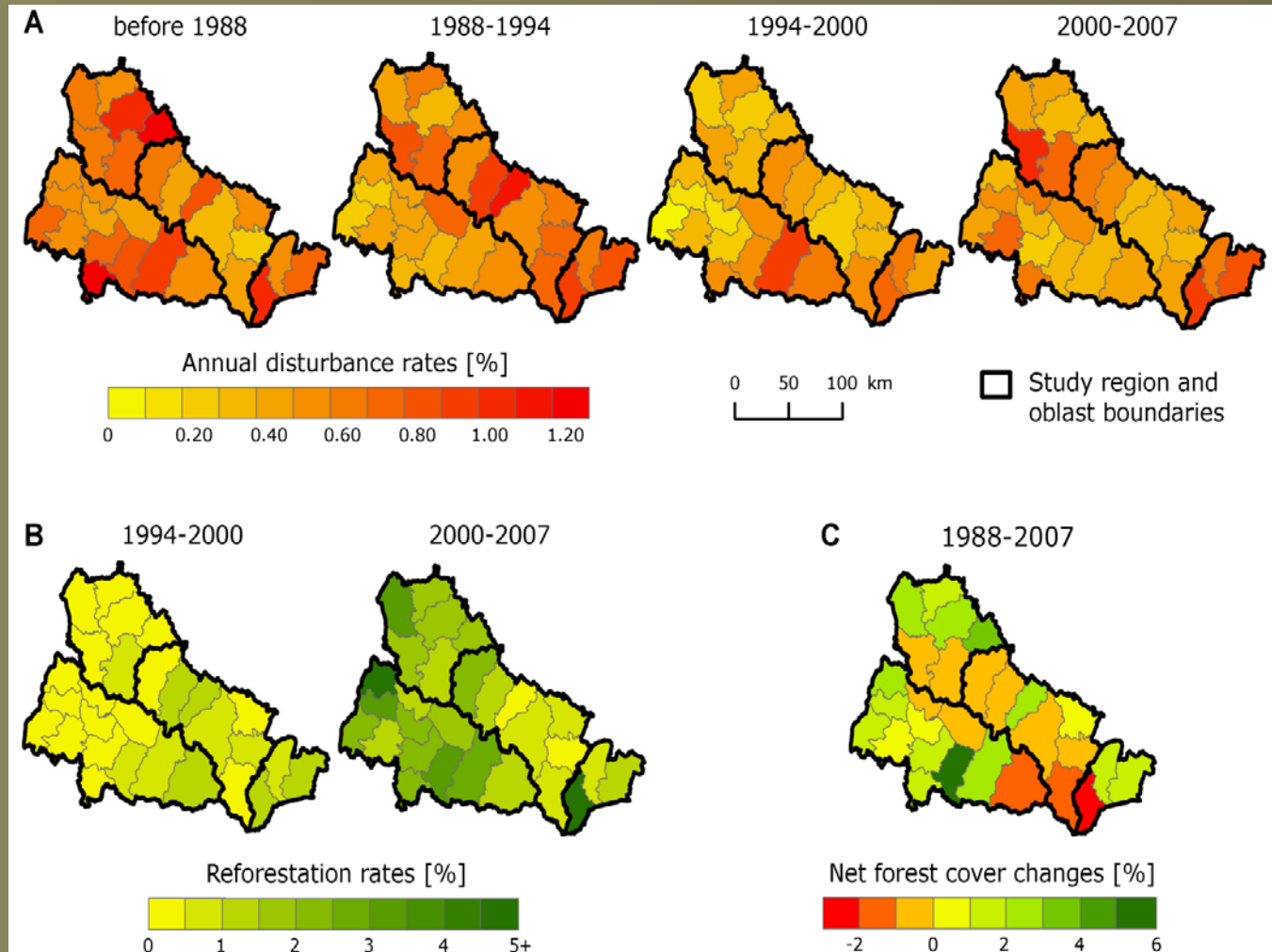
Logging



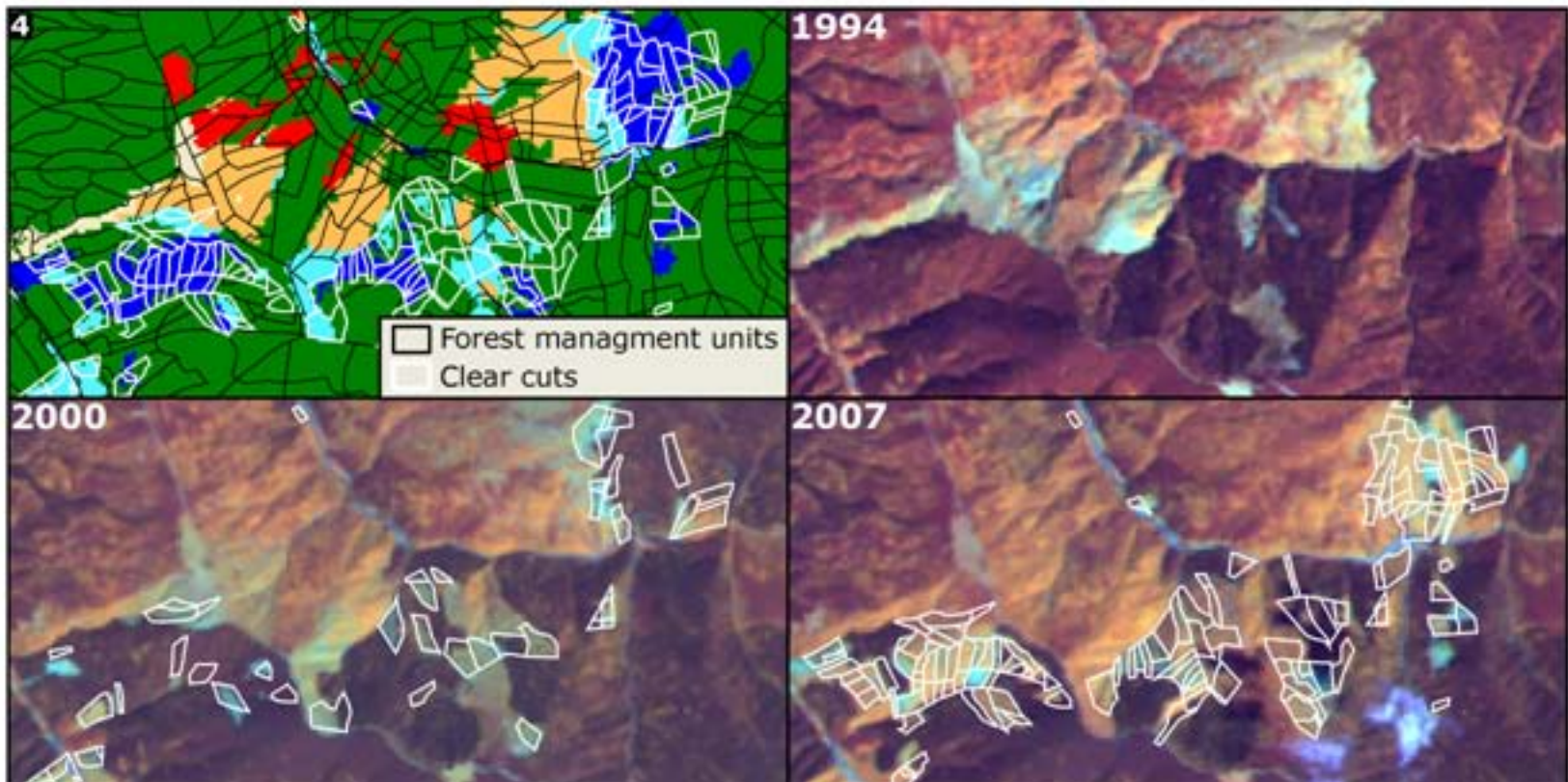
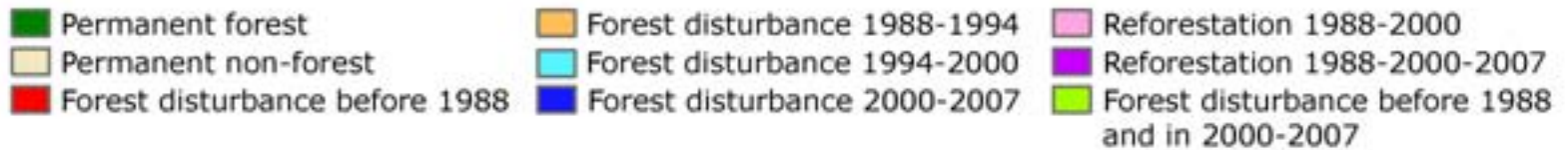
Logging



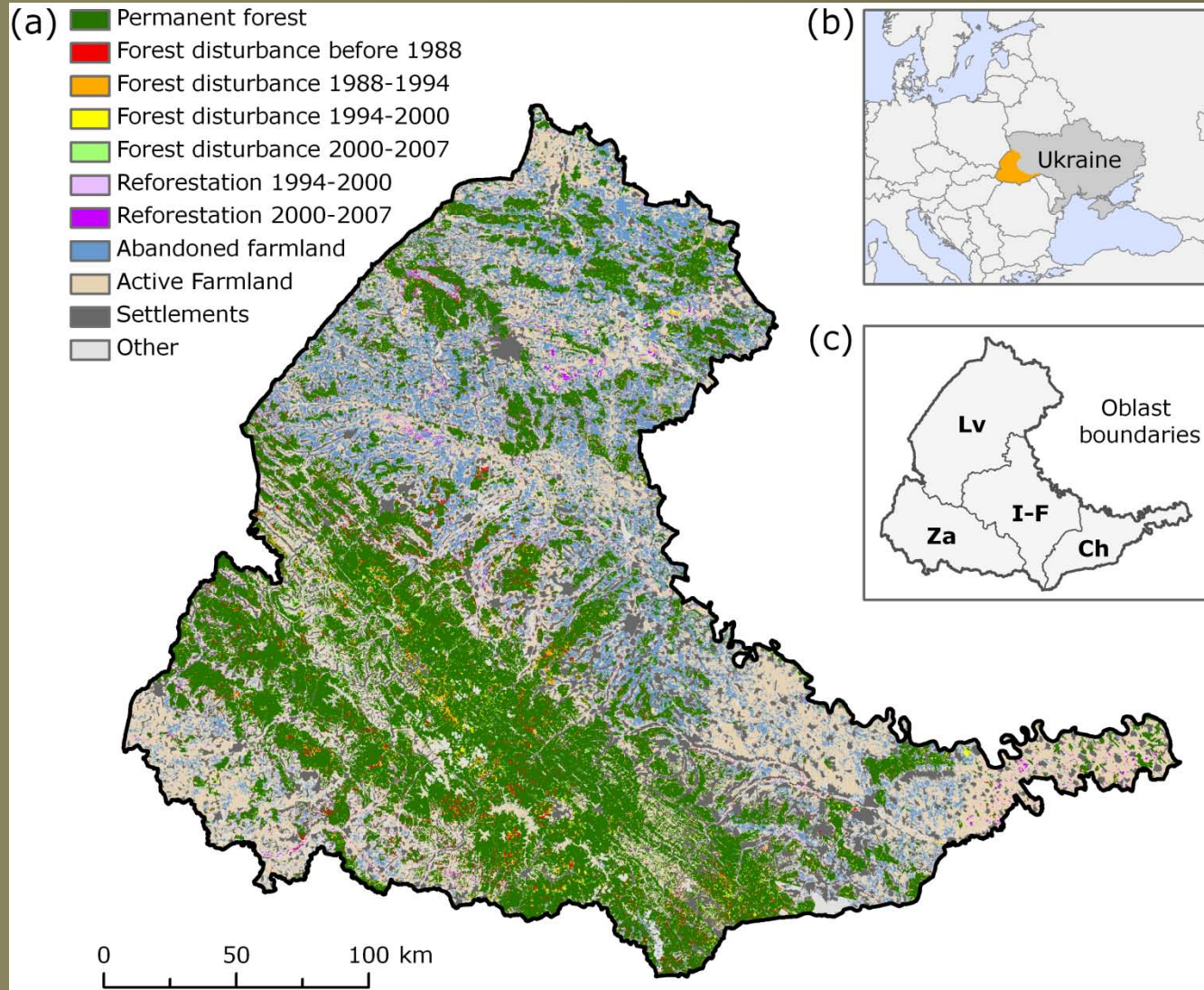
Logging



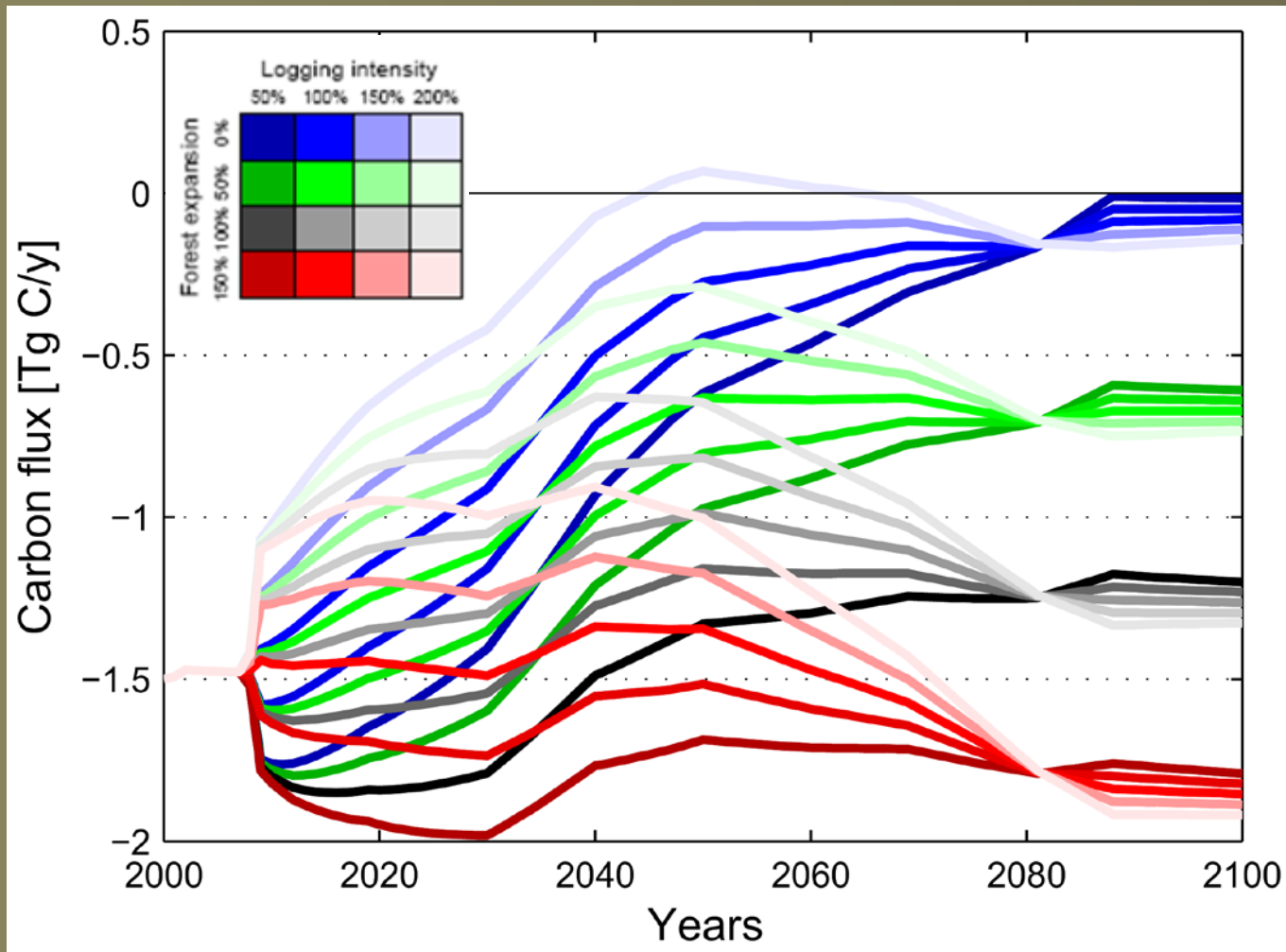
Logging



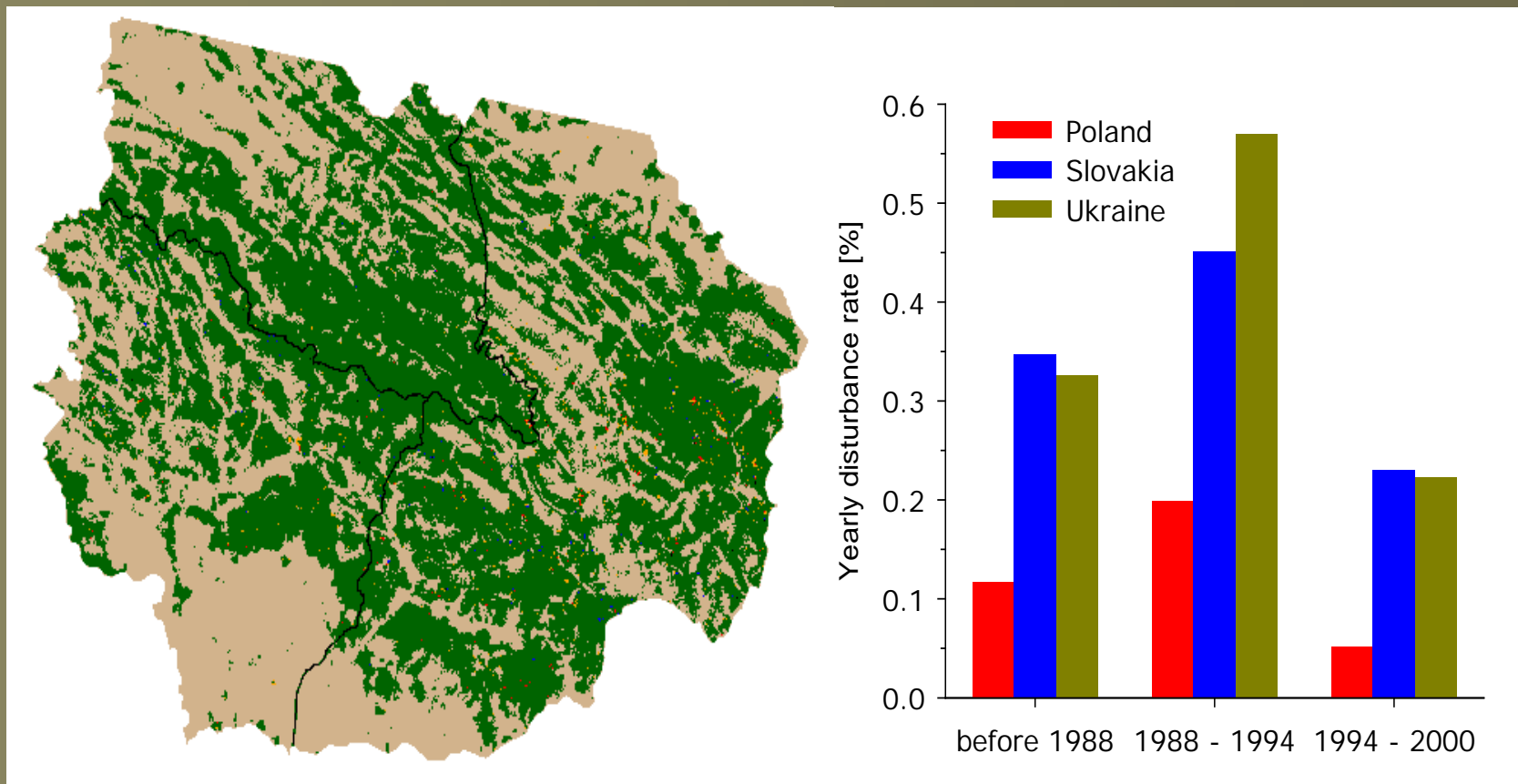
Logging



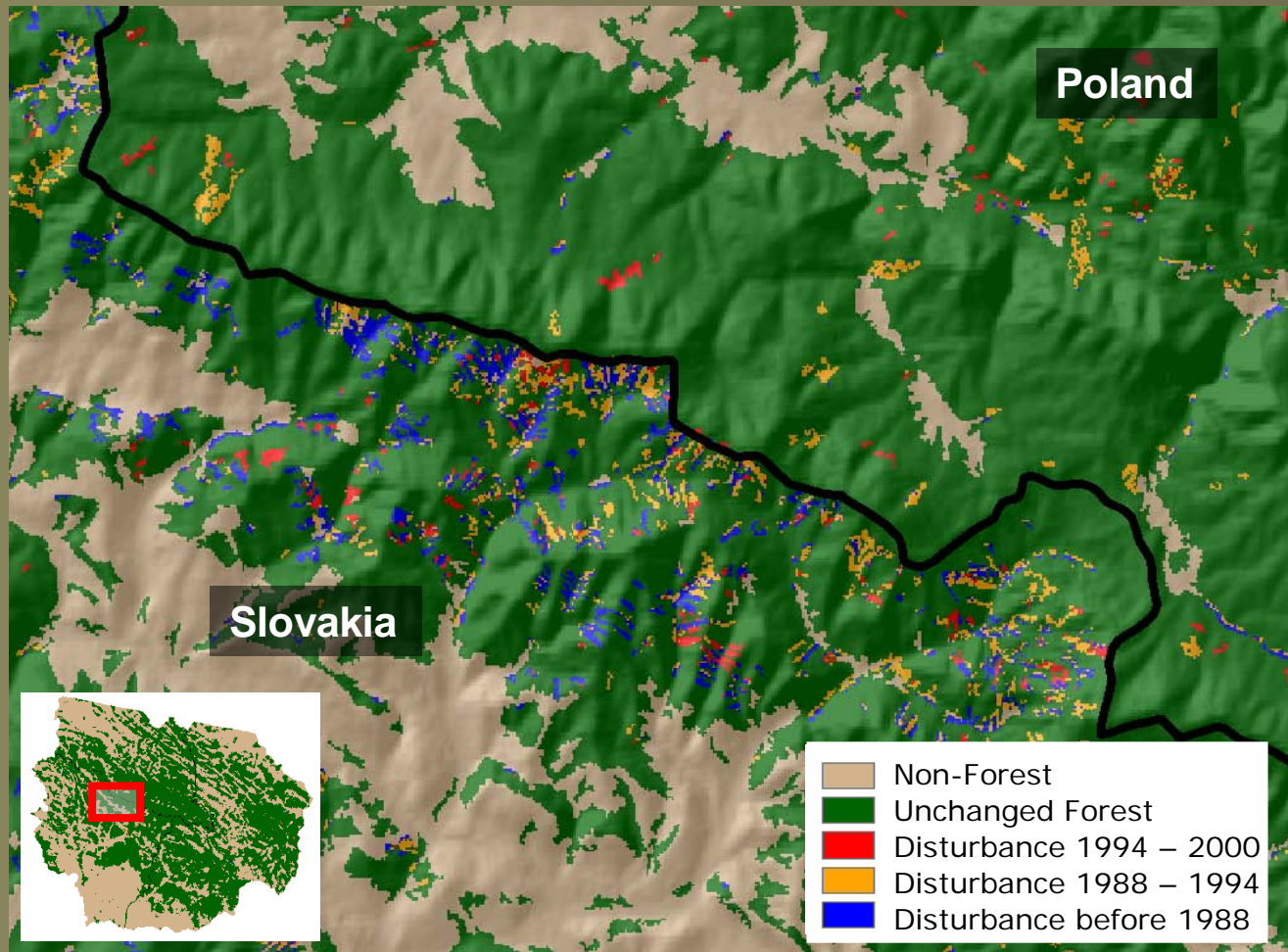
Logging



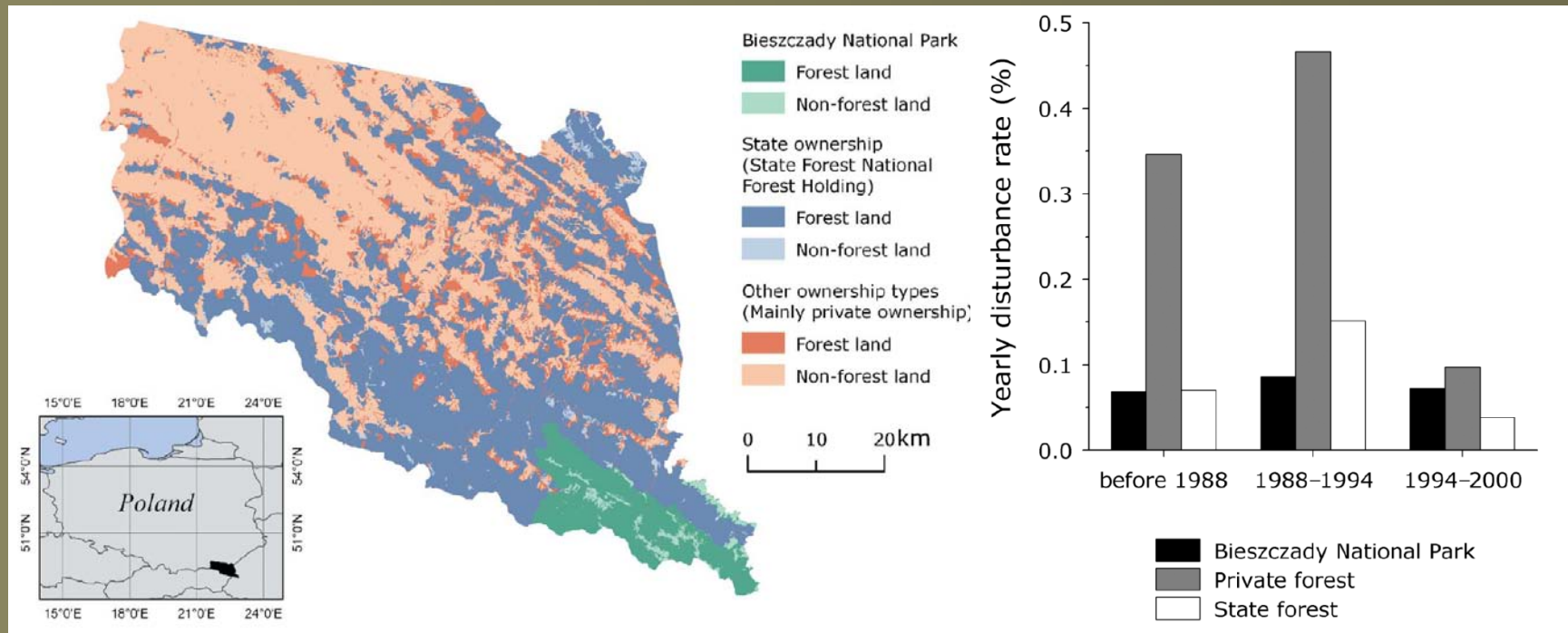
Logging



Logging



Logging



Conclusions

- 1. Institutional changes*
- 2. Farmland abandonment*
- 3. Logging*

Conclusions

1. Institutional changes

- Major transitions***

- Shock therapy***

 - Open markets***

 - Subsidies cut***

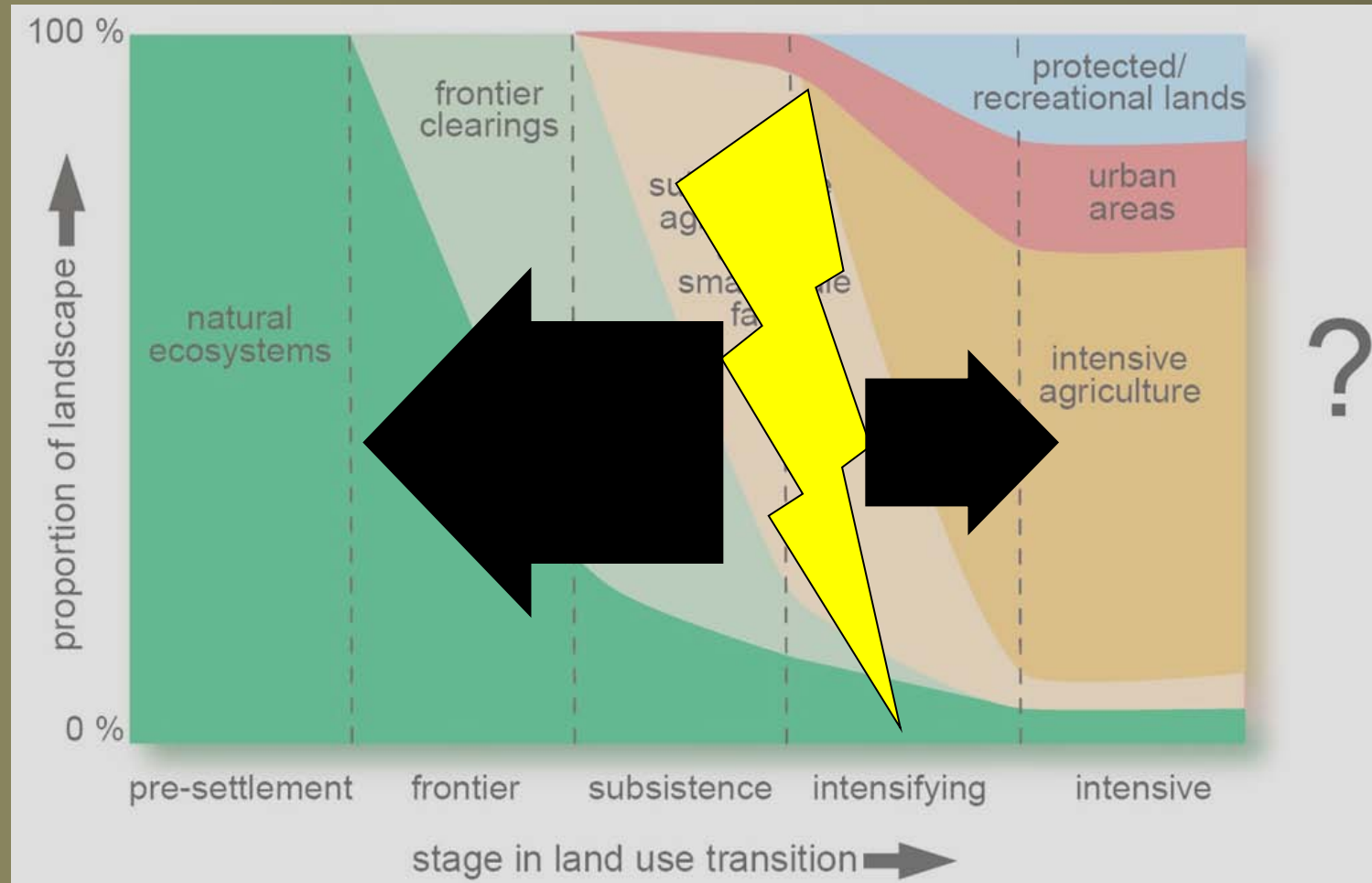
 - Privatization***

Conclusions

1. Institutional changes

- Strong differences among countries***
- Rural depopulation***
- Agricultural sector decline***

Introduction



Conclusions

2. Farmland abandonment

- Abandonment in all countries***
- Permanent change (at least for now)***
- Complete abandonment
vs. lower intensity***

Conclusions

2. Farmland abandonment

- Temporal patterns:

1. Immediate shock phase

2. Market economy phase

- Spatial patterns:

1. Strong crossborder differences

2. Mediated by local conditions

Introduction



Conclusions

3. *Logging*

- *Logging rates changed rapidly after the collapse*
- *Direction of the changes varied*
- *Some changes permanent, some not*

Conclusions

Institutions

*No single institution 'explained'
farmland abandonment or logging*

*Rather, the strength of institutions
mattered most*

*Thanks to collaborators
and graduate students!*



A large crowd of people is gathered in front of the Brandenburg Gate in Berlin. The gate is a prominent neoclassical monument with six Doric columns. The scene is set during the day under a clear blue sky. A flag is visible on a tall pole to the right. In the foreground, a dense crowd of people is visible, some holding signs. One sign on the right says "Test for all!". Another sign in the lower right corner features the NASA logo and the text "NASA LCLUC". The text "Thanks to NASA LCLUC, ESSF and NIP!!" is overlaid in the center of the image in a large, white, bold, italicized font.

***Thanks to
NASA LCLUC,
ESSF and NIP!!***



Thank you!!!

radeloff@wisc.edu

kdebeurs@vt.edu

ozdogan@wisc.edu