

Tropical Deforestation and the Land-Water Interface

Linking land use and the integrity of freshwater ecosystems

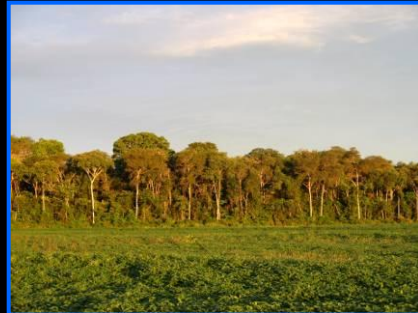
Marcia Macedo

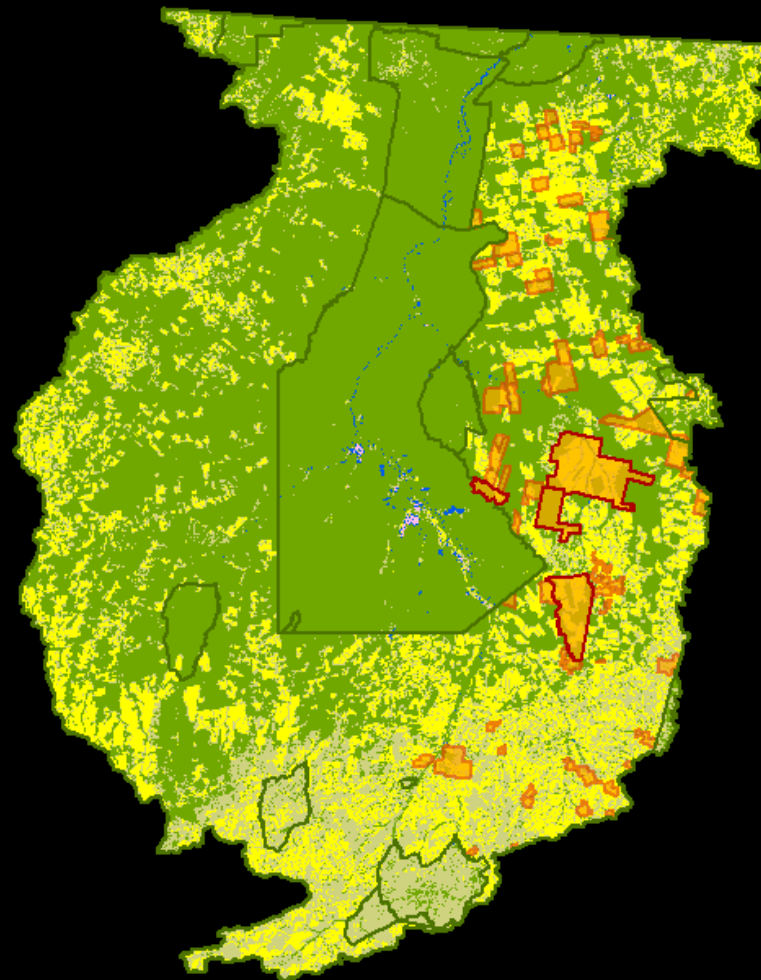
April 21, 2010



Research goal

To understand how land use change affects the connectivity of streams and explore the implications of these changes for the health of freshwater ecosystems





- Protected Areas
- RSR Farms
- Ag/Pasture
- Cerrado
- Forest
- Open Water
- Sandbars
- Wetlands

100 km

LU map: Claudia Stickler

Land use intensification



💧 deforestation

- 6.3 M ha from 2000-2009 (INPE)

💧 drivers

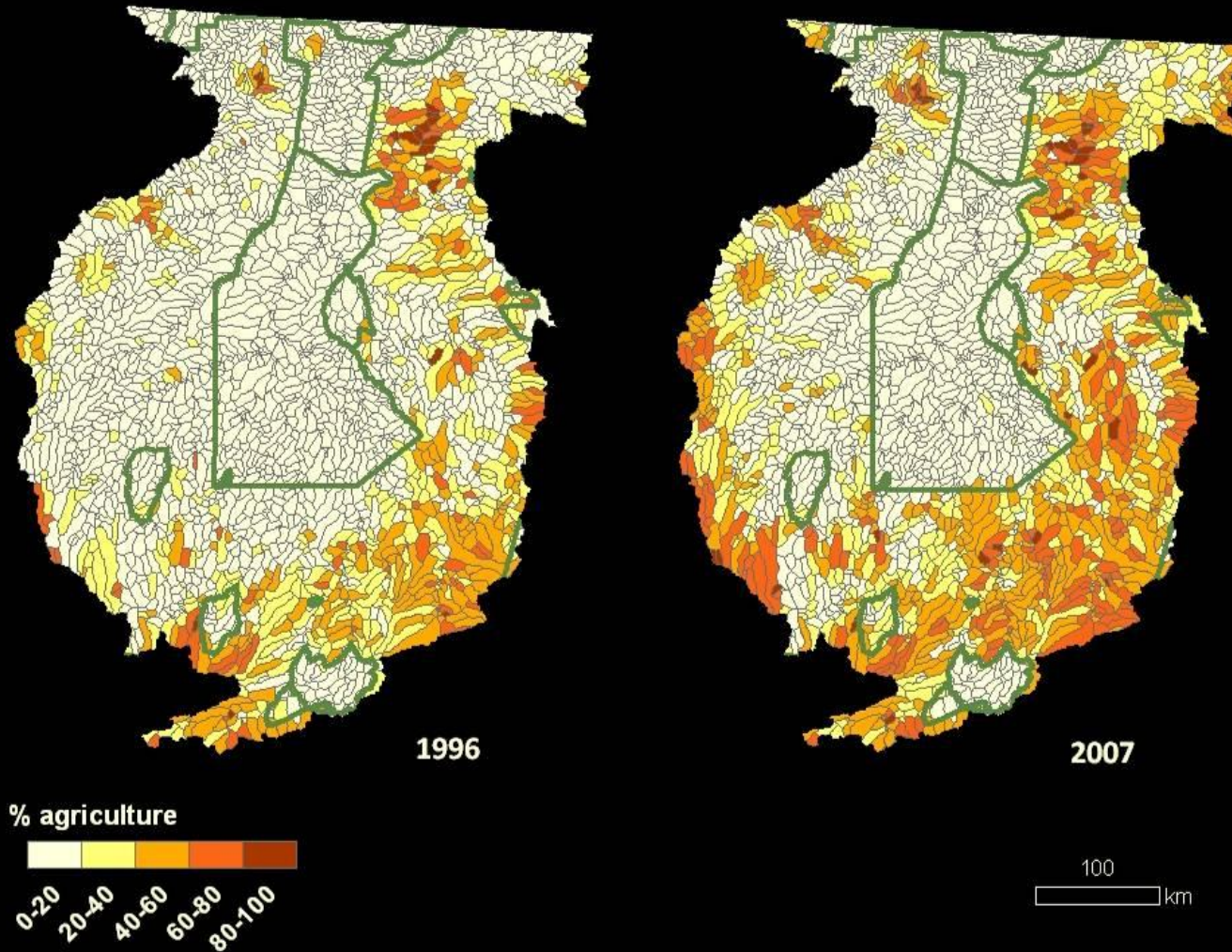
- industrial agriculture
- cattle production



💧 land use practices

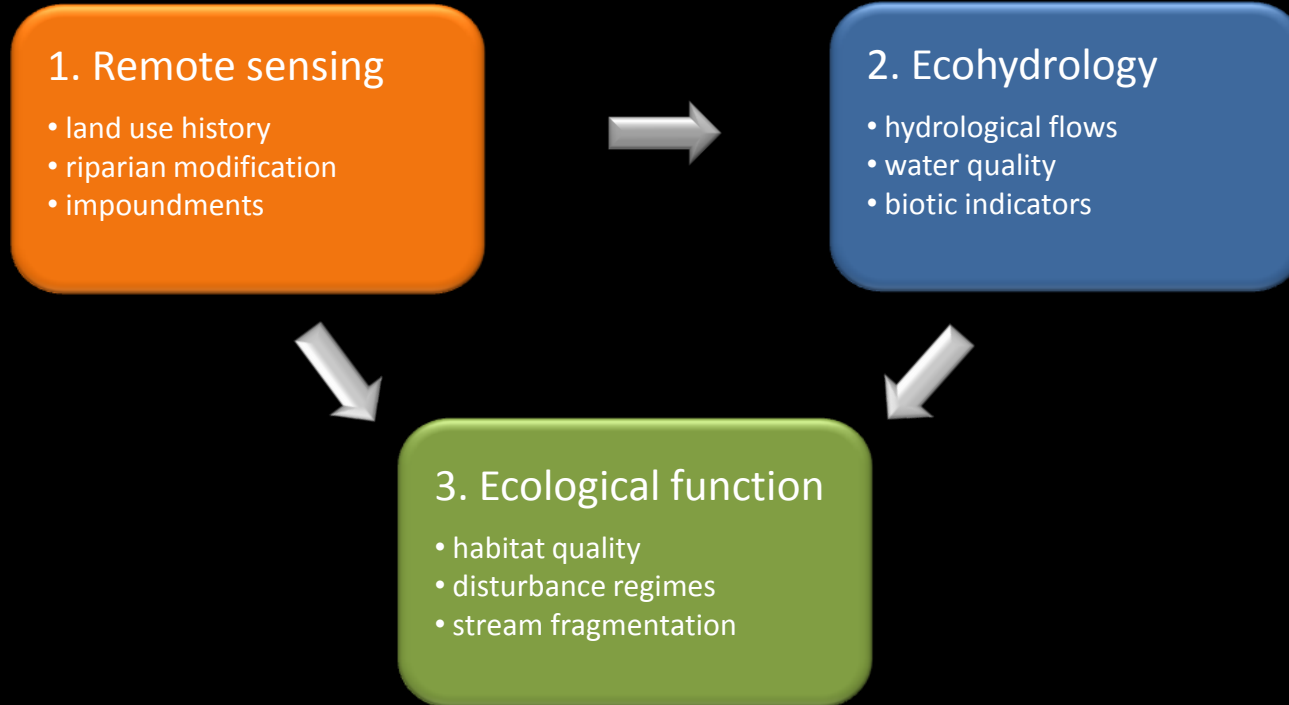
- riparian forest removal
- small dam installation

Catchment scale land use

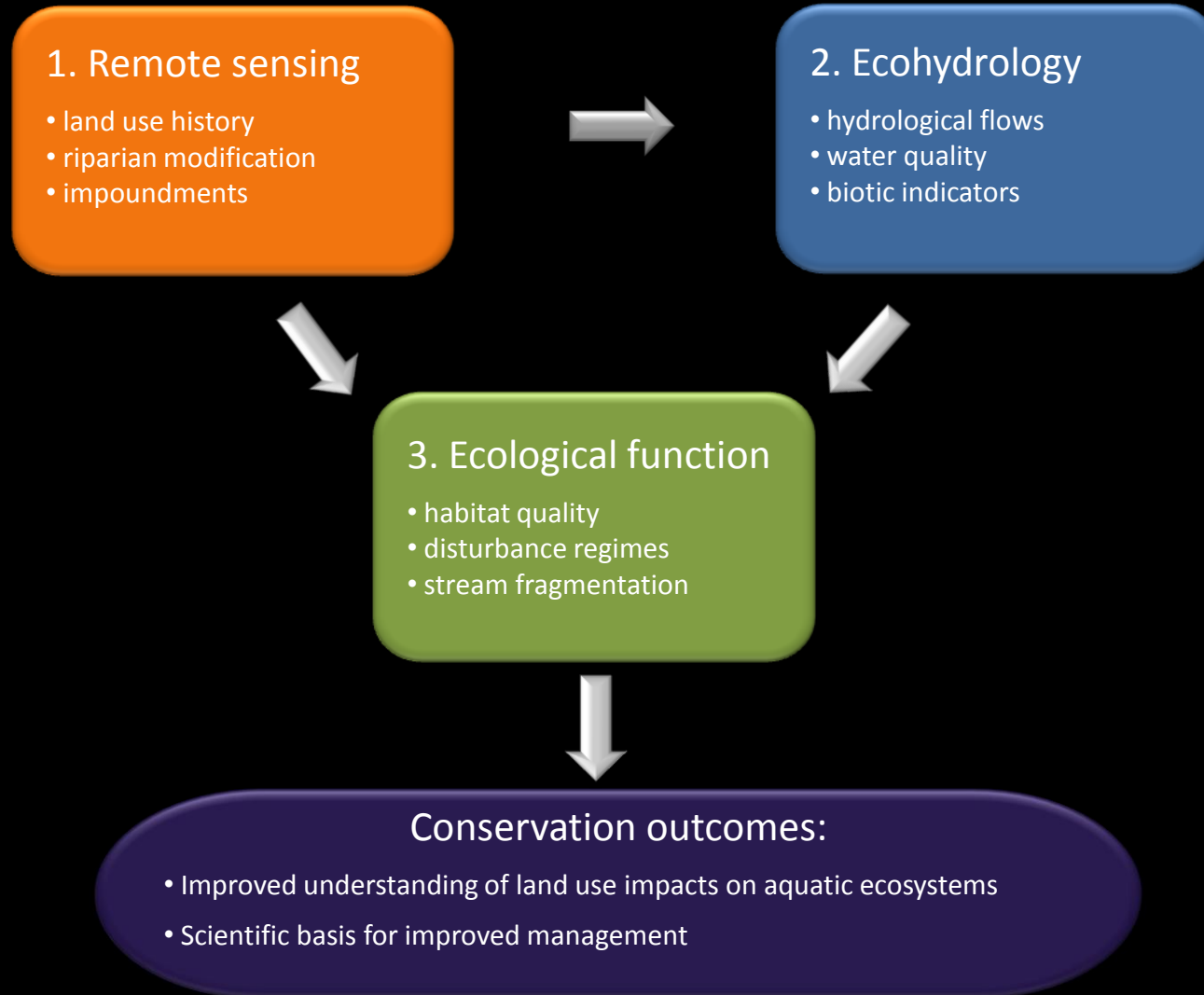


LU data: Claudia Stickler

Research framework



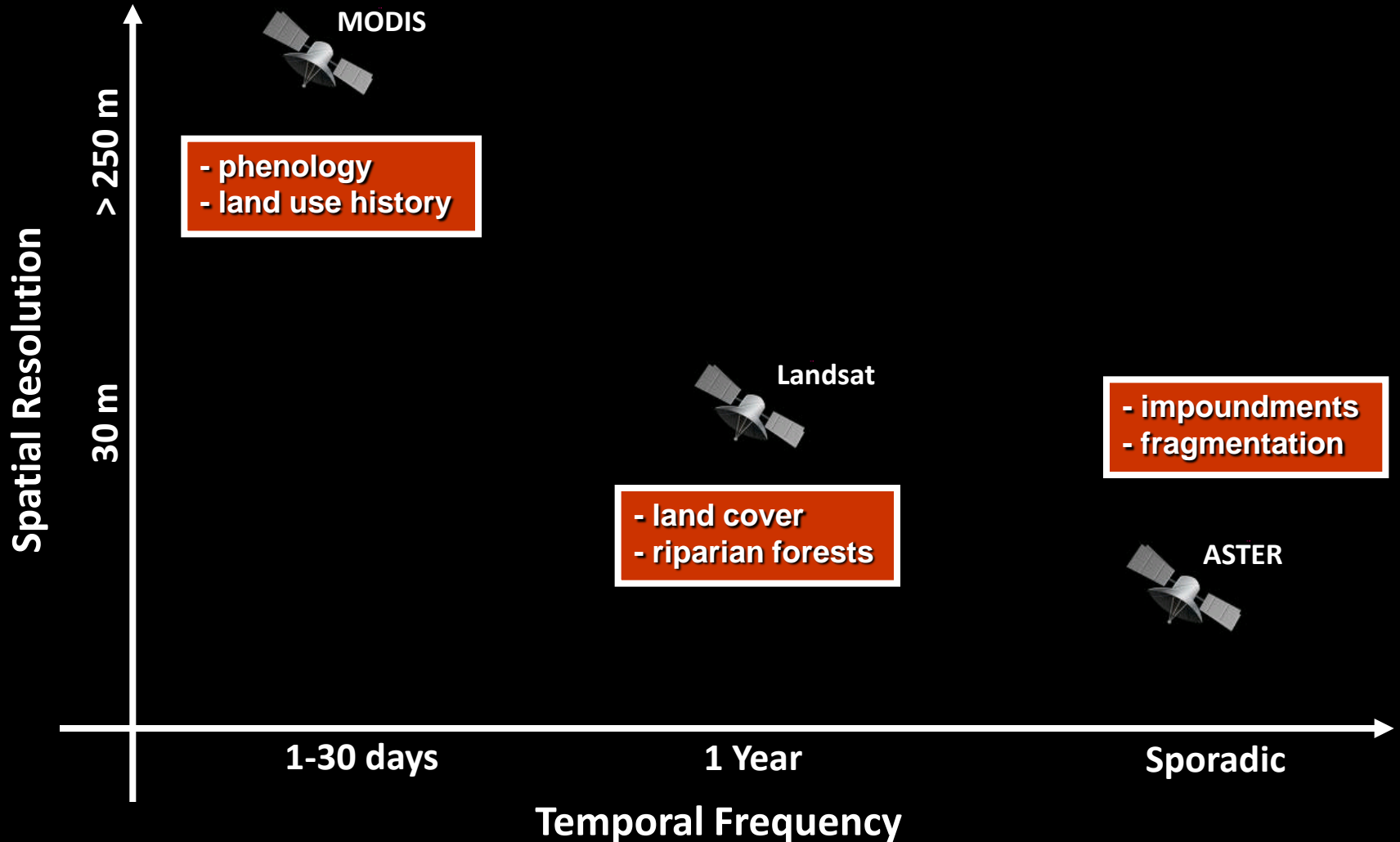
Research framework



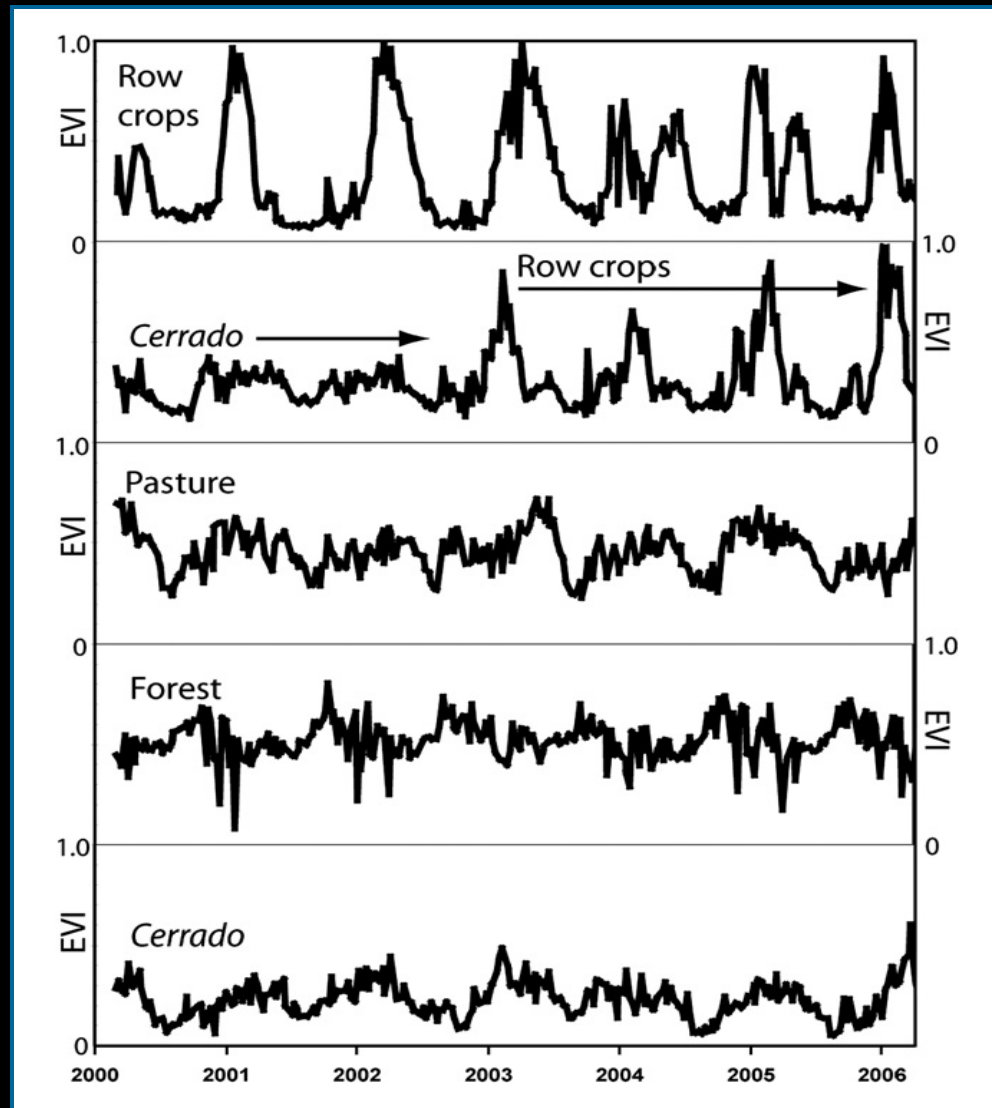


Remote sensing

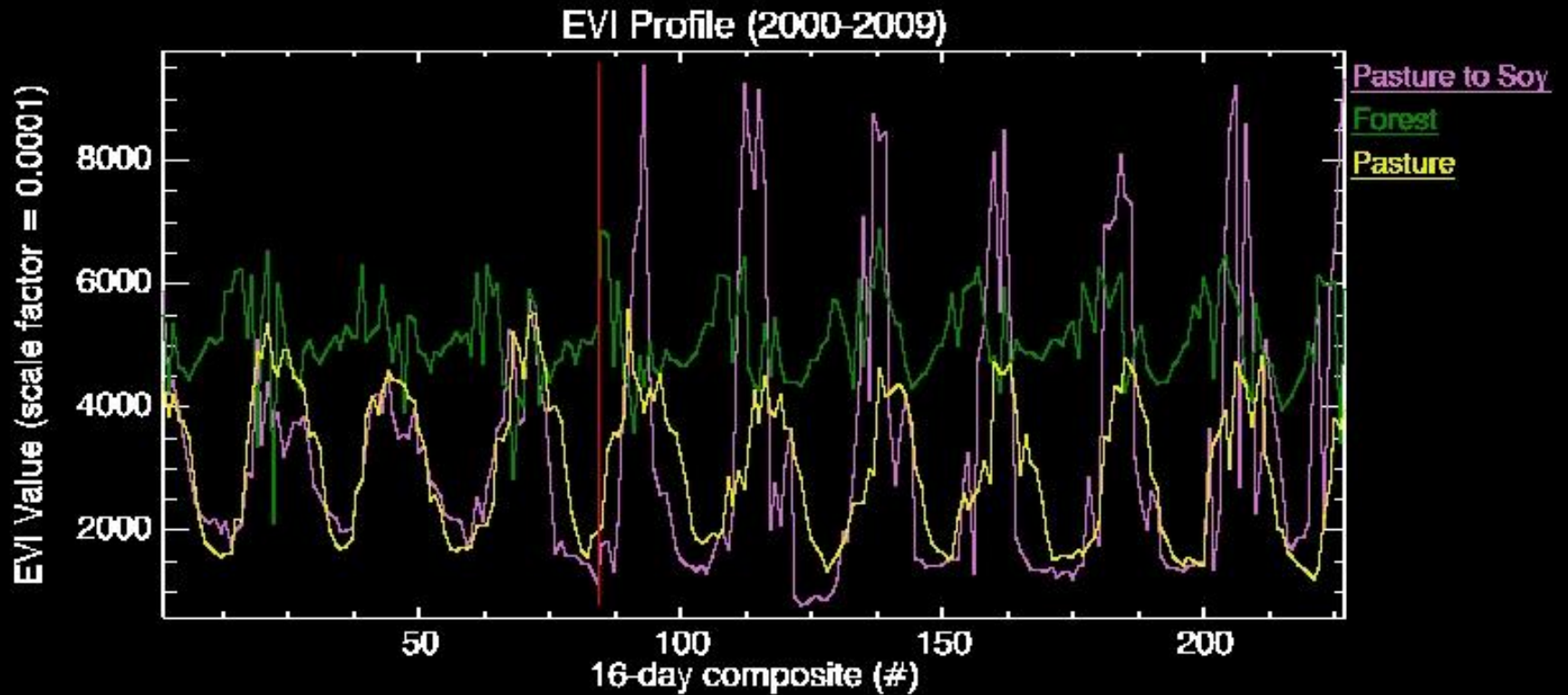
Multiple scales



EVI time series

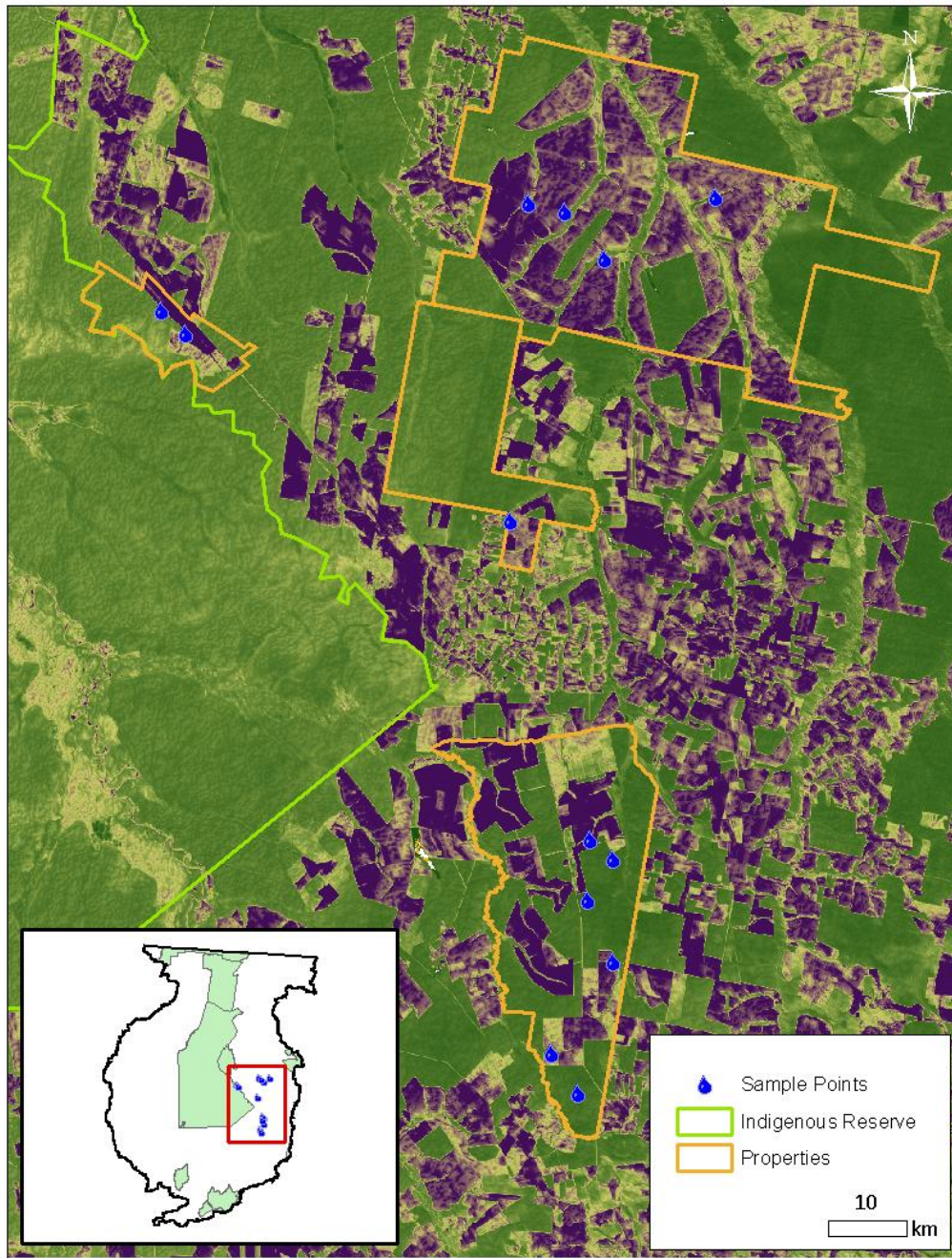


EVI time series



Ecohydrology





Water quality indicators

	F-Pasture	F-P-Soy	Forest
hourly	<ul style="list-style-type: none">• T , rainfall, light, turbidity, discharge, RH		
monthly	<ul style="list-style-type: none">• T, DO, pH, conductivity, nutrients		
yearly	<ul style="list-style-type: none">• periphyton (production, biomass)• fish community		
	n=3	n=5	n=4



• primary production (chl-a)

• community composition

• nutrient limitation

• primary production (chl-a)

• light (lux)

• temperature (C)

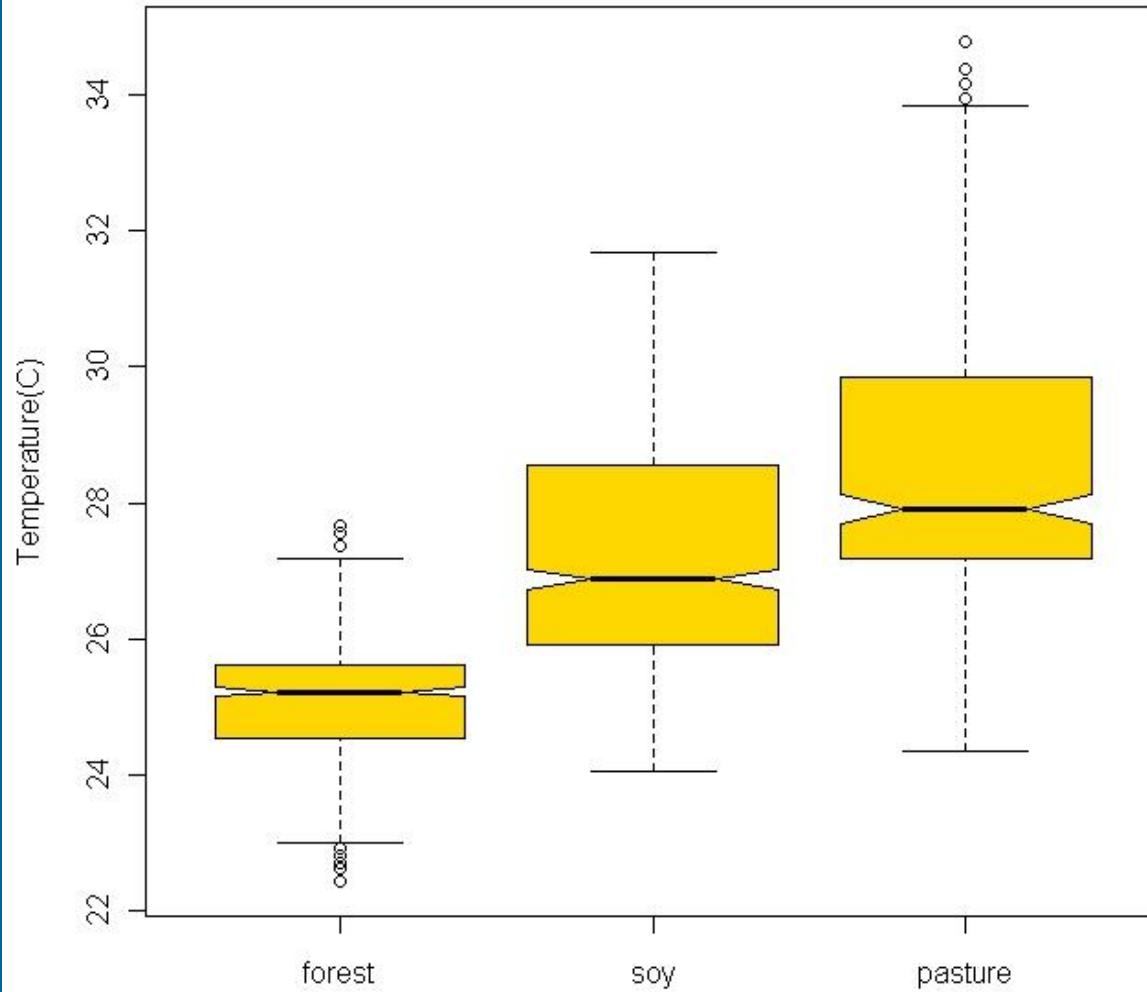
• clarity (luxA/luxB)

• water velocity

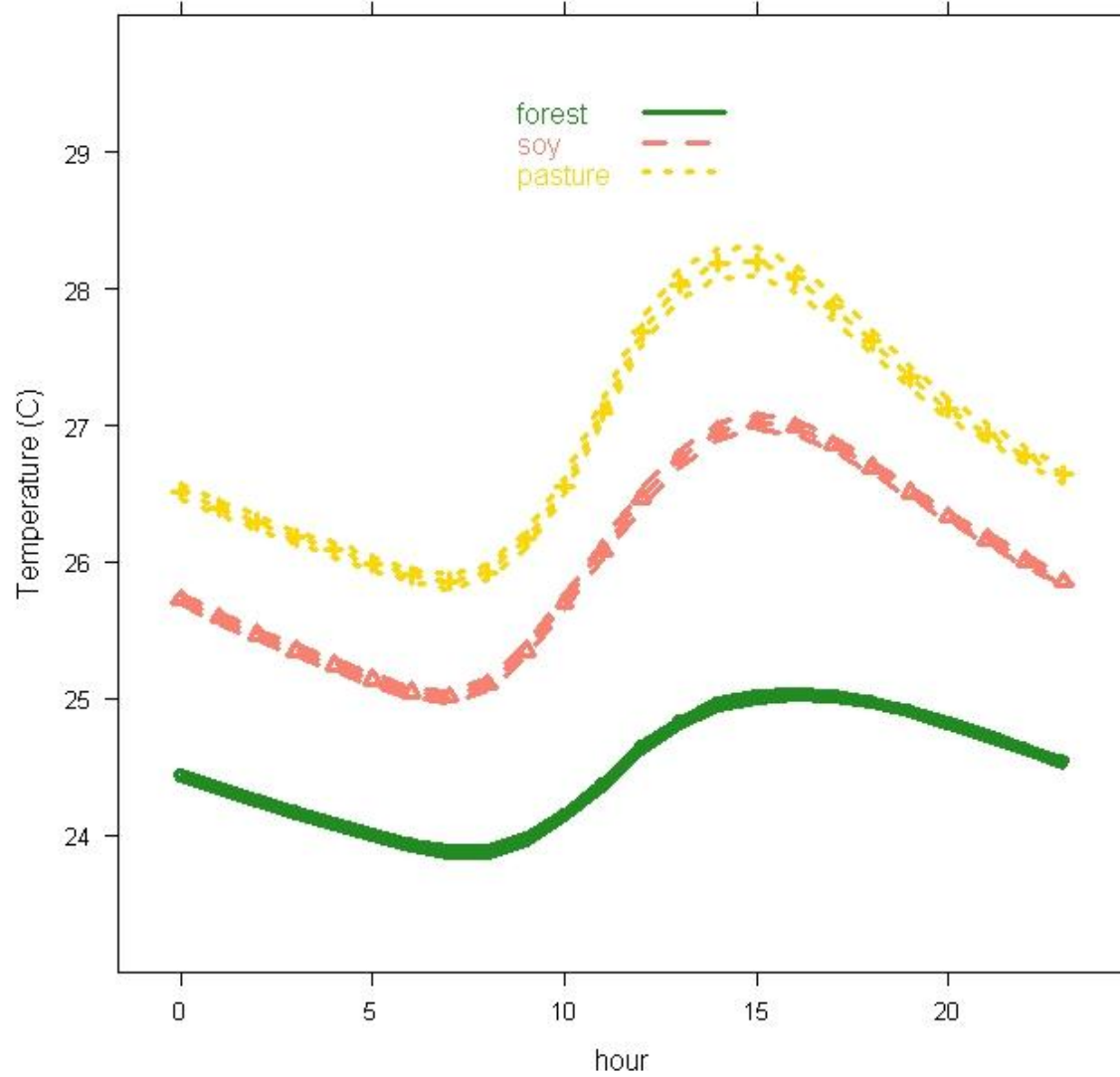
• discharge (m³/s)



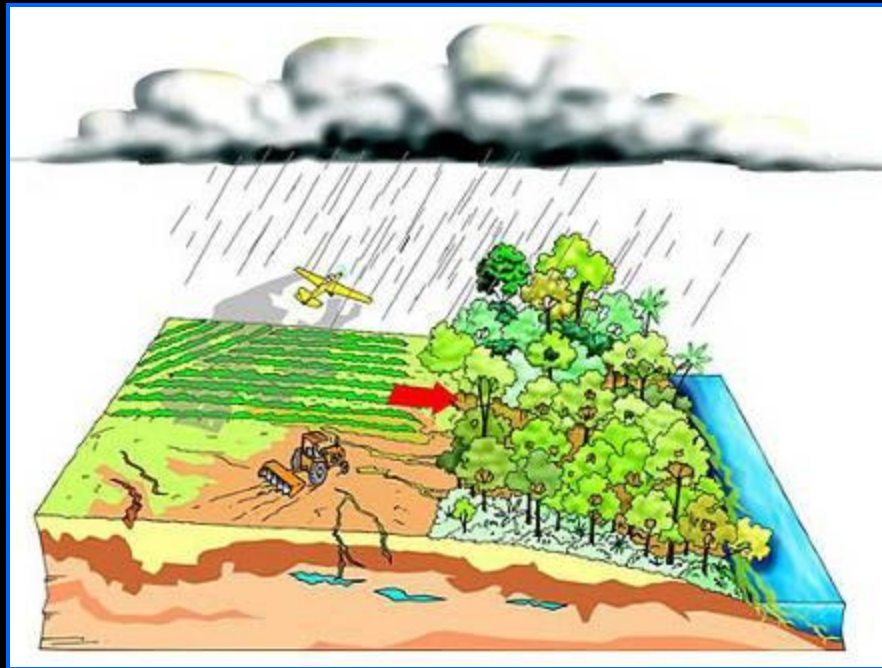
Maximum daily temperature



Mean hourly stream temperature



Modeling stream temperature



Nepstad et al., 2007

Covariates

- light
- riparian cover
- discharge
- rainfall
- watershed area
- LU history
- impoundments
- air temperature



Ecological function

Hydrological connectivity

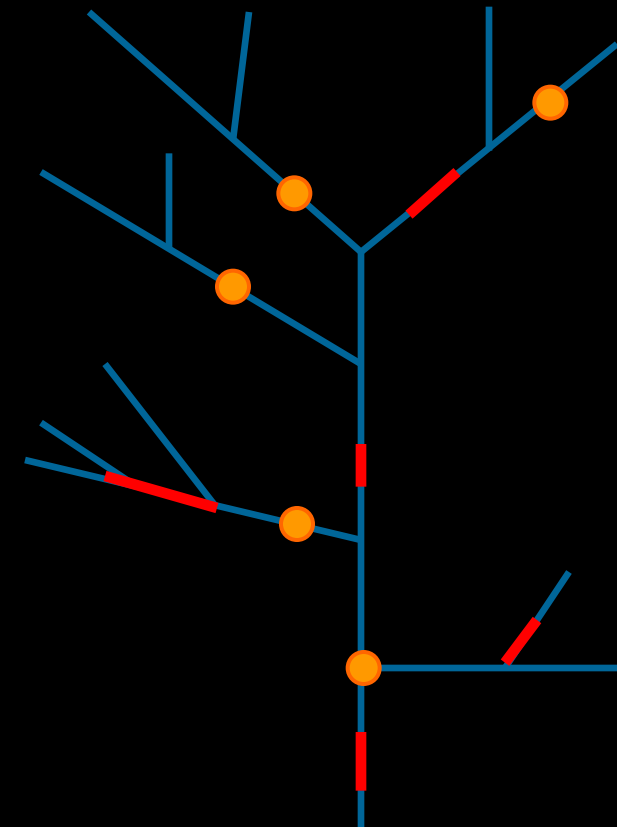
- fragmentation alters physical variables that determine basic ecological function
- impoundments and riparian forest removal change:
 - flow/sediment transport
 - light/temperature
 - nutrient regimes



Photo: Vania Neu, 2007

Extrapolating to landscape scale

- develop fragmentation indices
 - impoundments
 - riparian disturbance
 - landscape metrics
- infer impacts on biota
- prioritize management



- impoundments
- “hotspot” (degraded riparian)

Xingu in the news...

Belo Monte Dam May Operate at 40% of Capacity, Estado Says

-- O Estado de São Paulo, April 11 2010

Amazon Dam Project Pits Economic Benefit Against Protection of Indigenous Lands

-- The New York Times, April 18 2010



-- International Rivers



Avatar director James Cameron joins Amazon tribe's fight to halt giant dam

-- The Guardian, April 18 2010

Acknowledgments...

- Blue Moon Foundation
- Columbia University, E3B Dept.
- DeFries lab group
- Instituto de Pesquisa Ambiental da Amazônia
- NASA Earth System Science Fellowship
- Packard Foundation
- Universidade Fereal de Minas Gerais (UFMG), Dept. of Limnology
- Universidade Estadual de Maringá, NUPELIA
- Universidade Estadual do Mato Grosso, Dept. of Ichthyology
- University of Maryland, Dept. of Geography
- Woods Hole Research Center





Thank you

mnm2115@columbia.edu