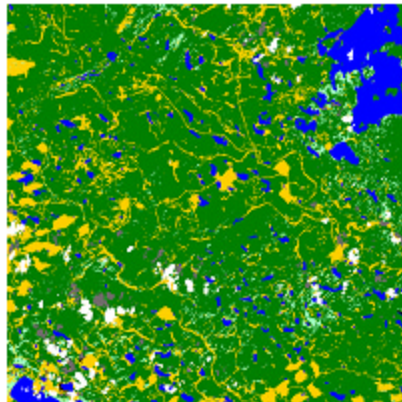
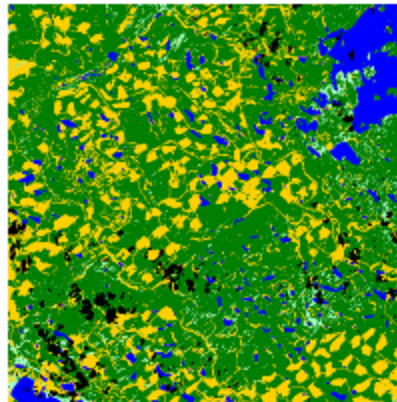


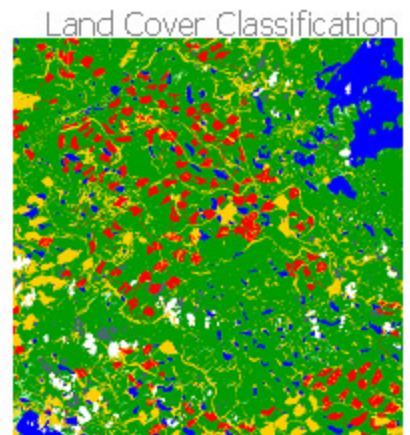
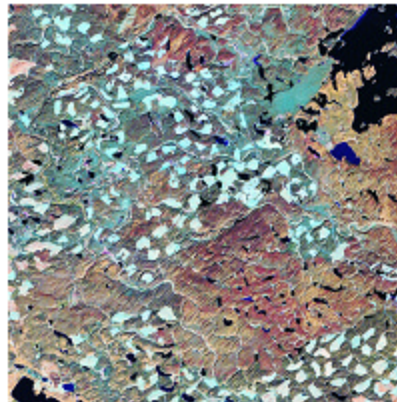
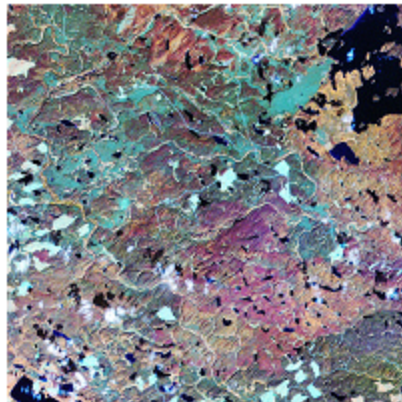
Application of DMG Methods in British Columbia, Canada



August 15, 1992



September 12, 1999



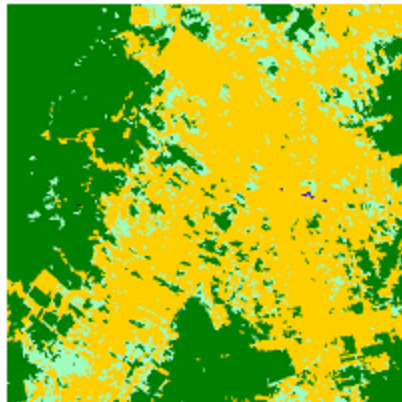
Forest Cover Lost	92 Km ²
Percent Forest Lost	10%
Forest Lost/Year	13.1 Km ²

1992 - 1999

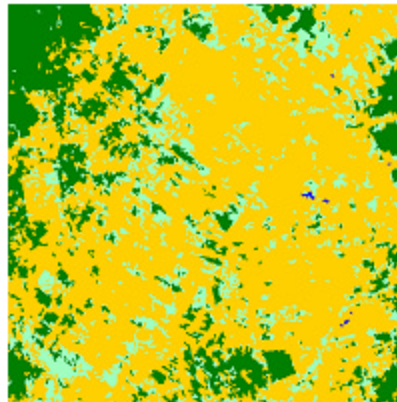
Here we see an example of forest loss due primarily to logging activities. The bright blue patches are areas of mostly bare ground left after the tree cover has been removed. While clear cuts in the 1992 image have likely been replanted, the limited red return from these patches in the 1999 image demonstrate how slowly forest regenerates in these environments. This 1169 Km² region lost 92 Km² of forest (10%) from 1992-1999.



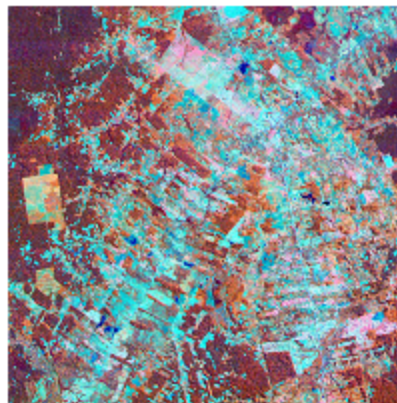
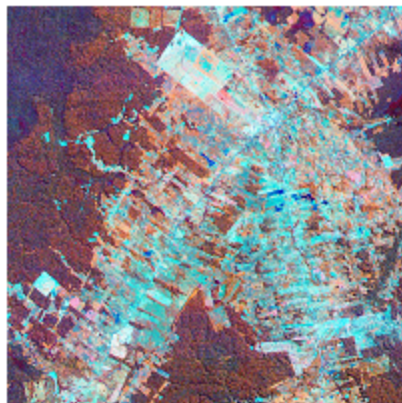
Example of Improved Hybrid Classification



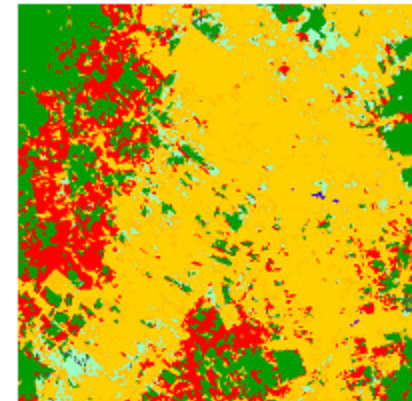
July 22, 1988



October 16, 1996



Land Cover Classification



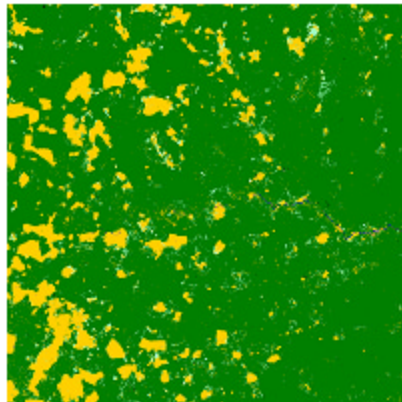
Forest Cover Lost	113 Km ²
Percent Forest Lost	51%
Forest Lost/Year	14.1 Km ²

1988 - 1996

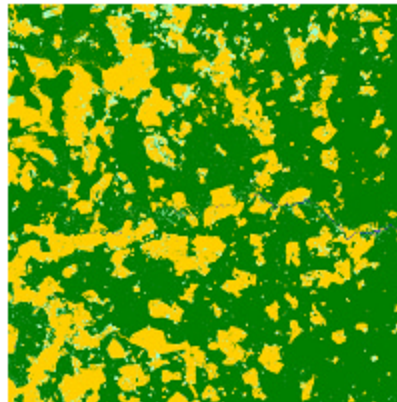
This is an example of development near Pucallpa, a reasonably large city in central Peru. This 576 Km² area has lost an estimated 113 Km² of forest (51%) from 1986 to 1996, 14.1 Km²/year.

Deforestation in this region is due to increased urbanization as well as expansion of existing agricultural areas.

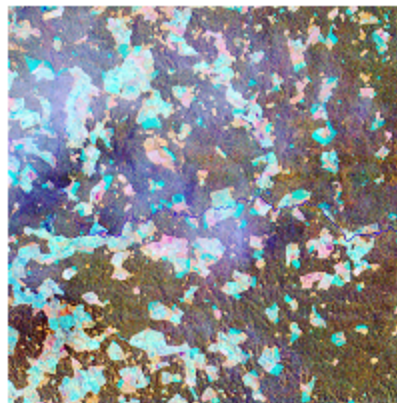
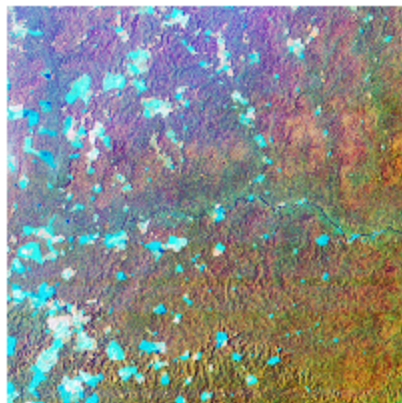
Example of Improved Hybrid Classification



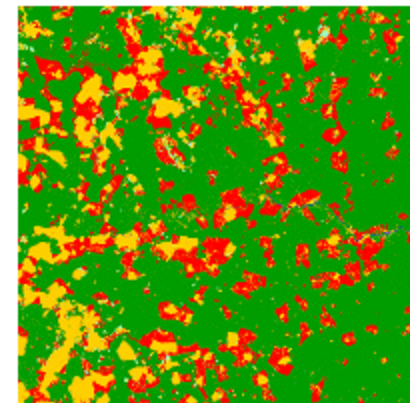
February 3, 1991



August 11, 1996



Land Cover Classification



Forest Cover Lost	105 Km ²
Percent Forest Lost	21%
Forest Lost/Year	21 Km ²

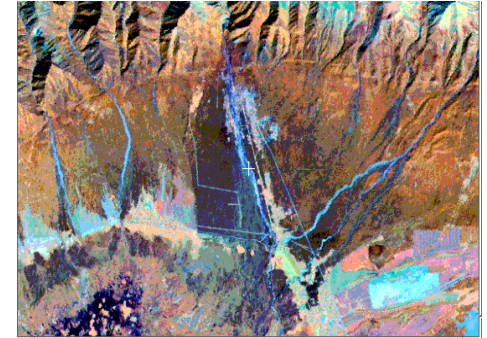
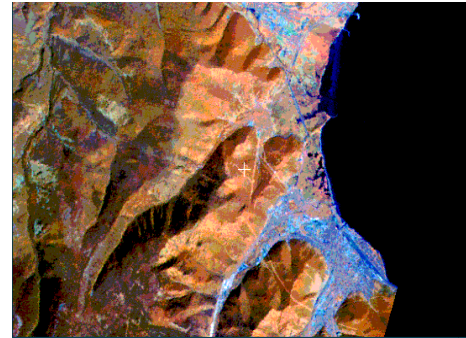
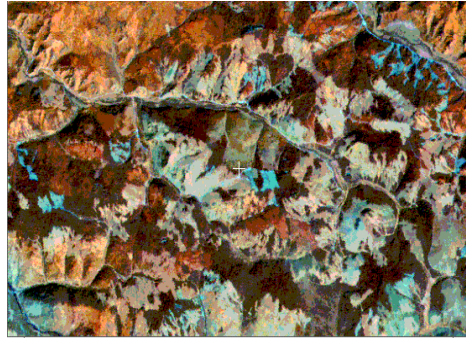
1991 - 1996

Here is a typical example of deforestation in the southern Colombia state of Caqueta. This 576 Km² area has lost an estimated 105 Km² of forest (21%) from 1991 to 1996, 21Km²/year.

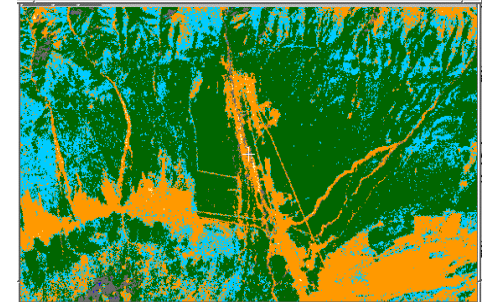
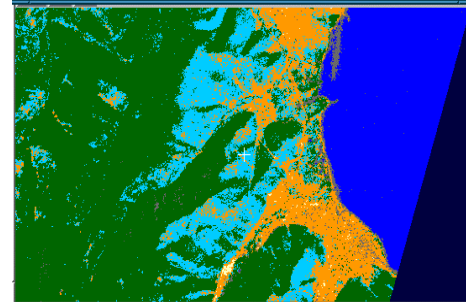
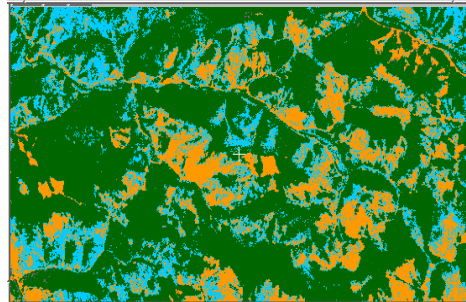
This area is characterized by fragmentation associated with the replacement of forests by agriculture. These are small scale farms operating at or just above the subsistence level.



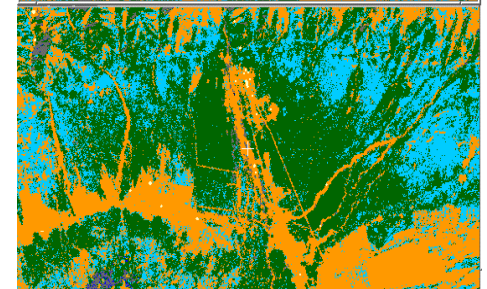
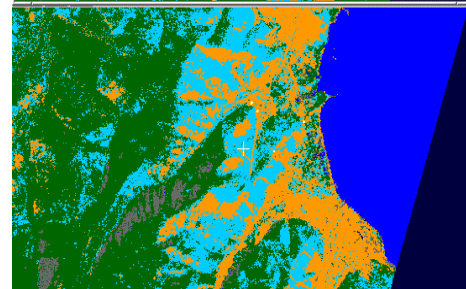
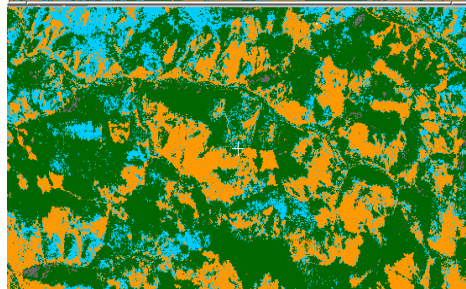
RGB image
(bands 4,5,3) for
136024 June 6,
1992



DMG Classification



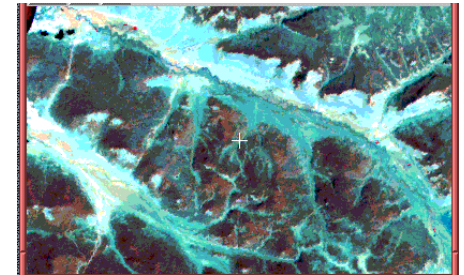
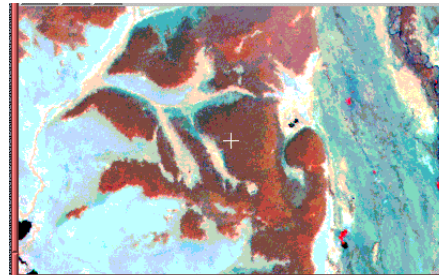
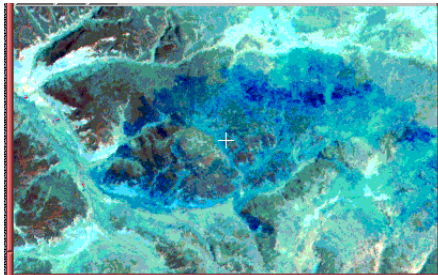
C5 Classification



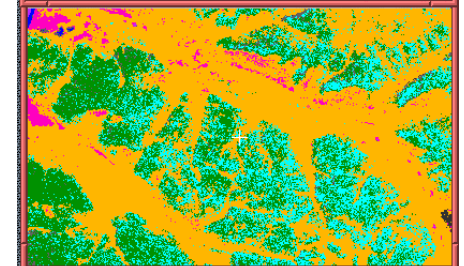
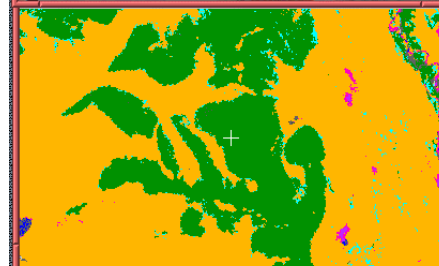
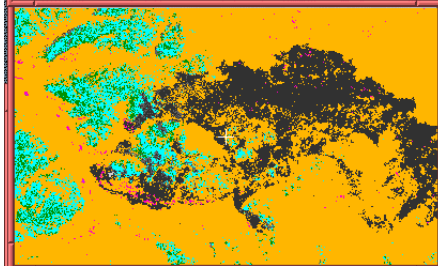
Comparison of DMG and C5 classification methods

- Forest
- Woodland/degraded forest
- Grassland/shrubland
- Bare/sparsely vegetated
- Burn scar
- Water
- Ice/snow
- Cloud
- Shadow

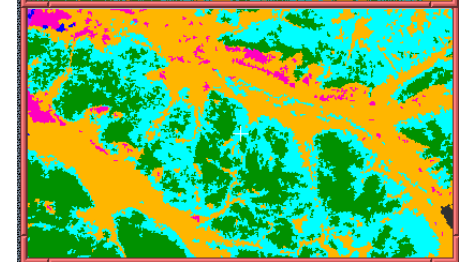
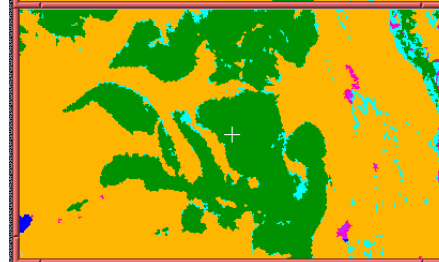
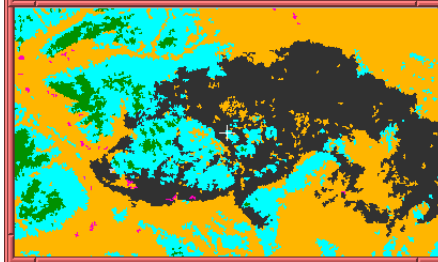
RGB image
(bands 4,5,3) for
136024 June 6,
1992



C5 Classification



DMG Classification



Comparison of DMG and C5 classification methods

