



International Workshop on Land Cover/Land Use Changes (LCLUC), Forestry, and Agriculture in South/Southeast Asia

3

Cambodia Forestry and Carbon Stock

Thav Sopheak

Royal University of Agriculture

sopheakthav@yahoo.com



Background

- Cambodia's forest area is governed by three institutions:
 - Forestry Administration, MAFF (permanence forest reserve and private forest)
 - Fisheries Administration, MAFF (flooded forest and mangrove)
 - Ministry of Environment (forest resources within Protected Areas)

Cambodia Main Forest Type

There are 5 main forest type in Cambodia:

- Deciduous Forest: 3,361,737 ha
- Evergreen Forest: 2,970,851 ha
- Semi-evergreen forest: 1,013,695 ha
- Flooded Forest: 438,590 ha
- Mangrove Forest: 72, 046 ha

Deciduous Forest

Allometric Equation: $AGB = 0.0607 * DBH^{2.2692} * H^{0.5122} * WD^{0.3183}$

Above Ground Biomass: 70.87 t/ha

Carbon Stock: 42.30 tC/ha



Evergreen Forest

Allometric Equation: $AGB = 0.0673 * (DBH^2 * H * WD)^{0.976}$

Above Ground Biomass: 133.12 t/ha

Carbon Stock: 85.72 tC/ha

Semi-evergreen Forest

Allometric Equation: $AGB = 0.0607 * DBH^{2.2692} * H^{0.5122} * WD^{0.3183}$

Above Ground Biomass: 165.23 t/ha

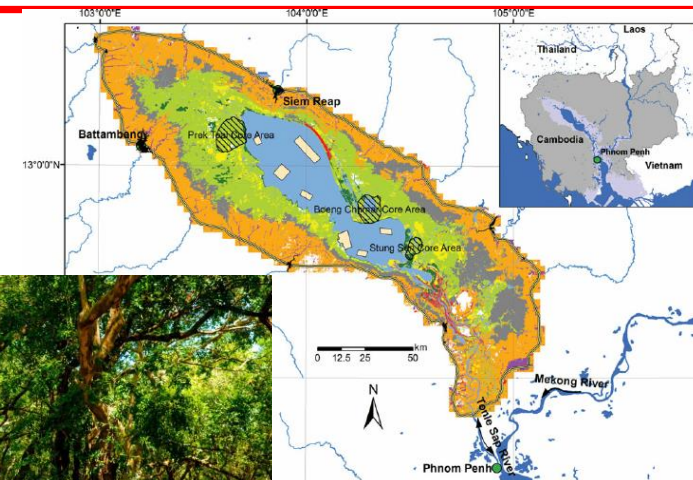
Carbon Stock: 93.19 tC/ha

Flooded Forest

Allometric Equation: $AGB = 220.227 * DBH^2 * H^{0.98}$

Above Ground Biomass: Not Yet

Carbon Stock: Not Yet

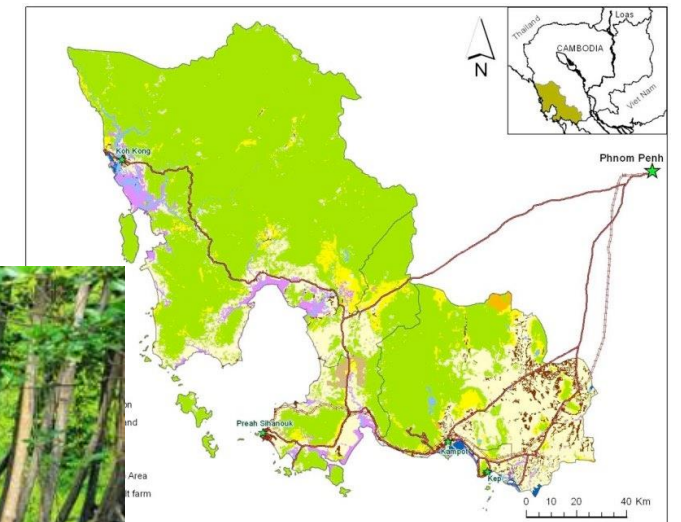


Mangrove Forest

Allometric Equation: $AGB = 0.1848 * DBH^{2.3524}$

Above Ground Biomass: Not Yet

Carbon Stock: Not Yet



Comparison Forest Carbon Stock

Forest Type	AGB t/ha	Carbon Stock (tC/ha)
Semi-evergreen Forest	165.23	93.19
Evergreen Forest	133.12	85.72
Deciduous Forest	70.87	39.97

Thank you