

**International Workshop on
Land Cover/Land Use Changes (LCLUC), Forestry, and Agriculture
in South/Southeast Asia**
Hotel Cambodiana, Phnom Penh, Cambodia: 8th - 10th August, 2022

Land Cover/Land Use and Agriculture in Cambodia – Current Status and Priorities



Seng Vang, Ph. D

Director

Department of Agricultural Land Resources Management

General Directorate of Agriculture (GDA)

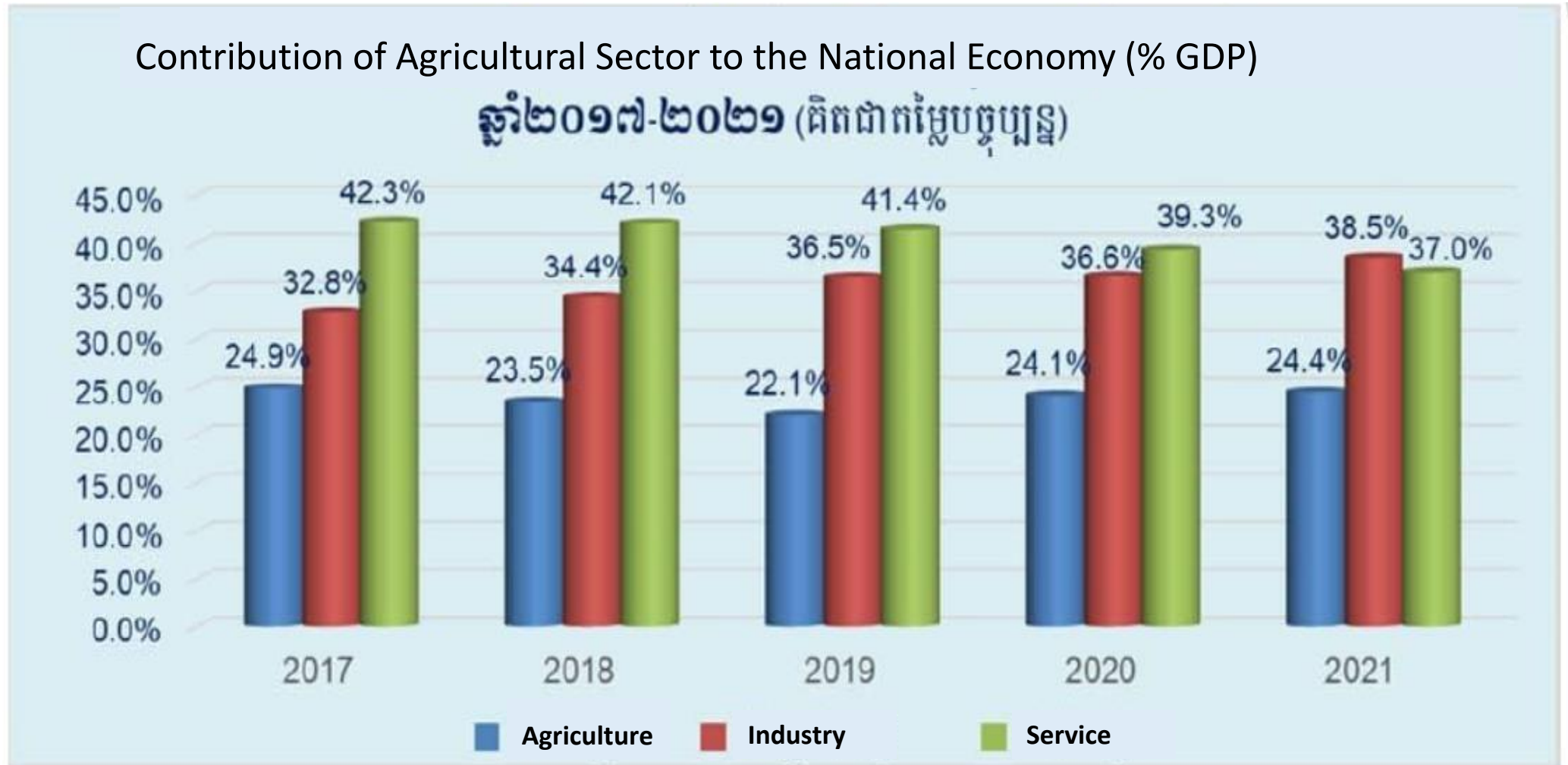
Outlines

1. Agriculture
2. Land cover/Land use
3. Land degradation
4. Current initiatives for land restoration
5. Priorities for sustainable agricultural land management





1. Agriculture



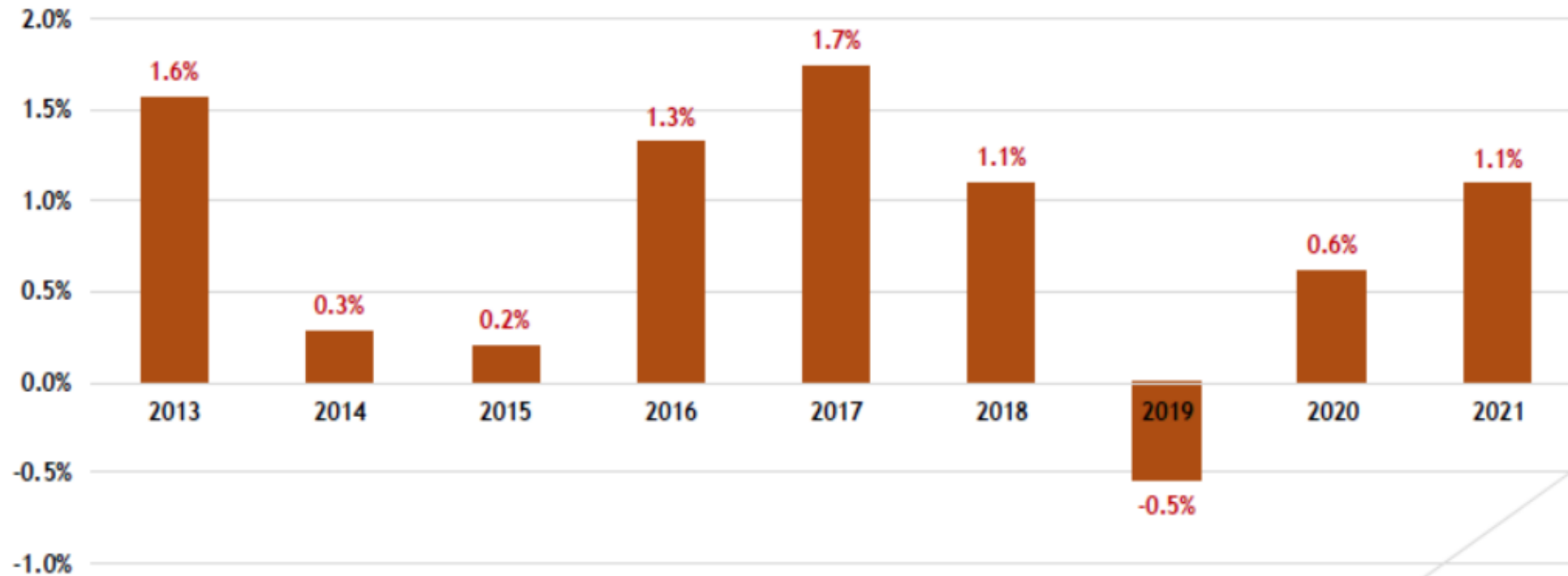
MAFF (2022). DPS

Agricultural subsectors (2017-2021)



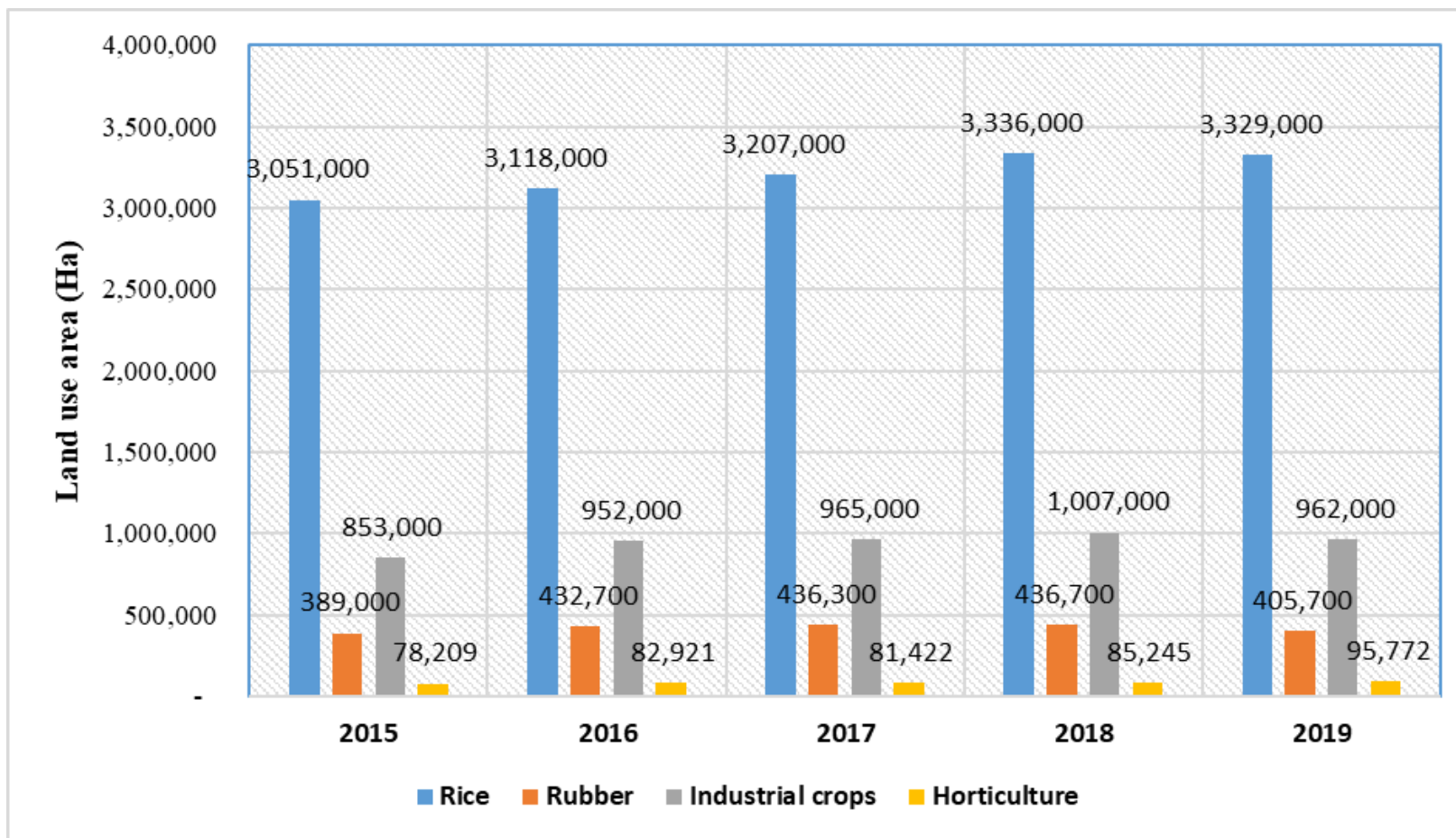
MAFF (2022). DPS

Agricultural growth 2013-2021 (%)



MAFF (2022). DPS

Current agricultural land use



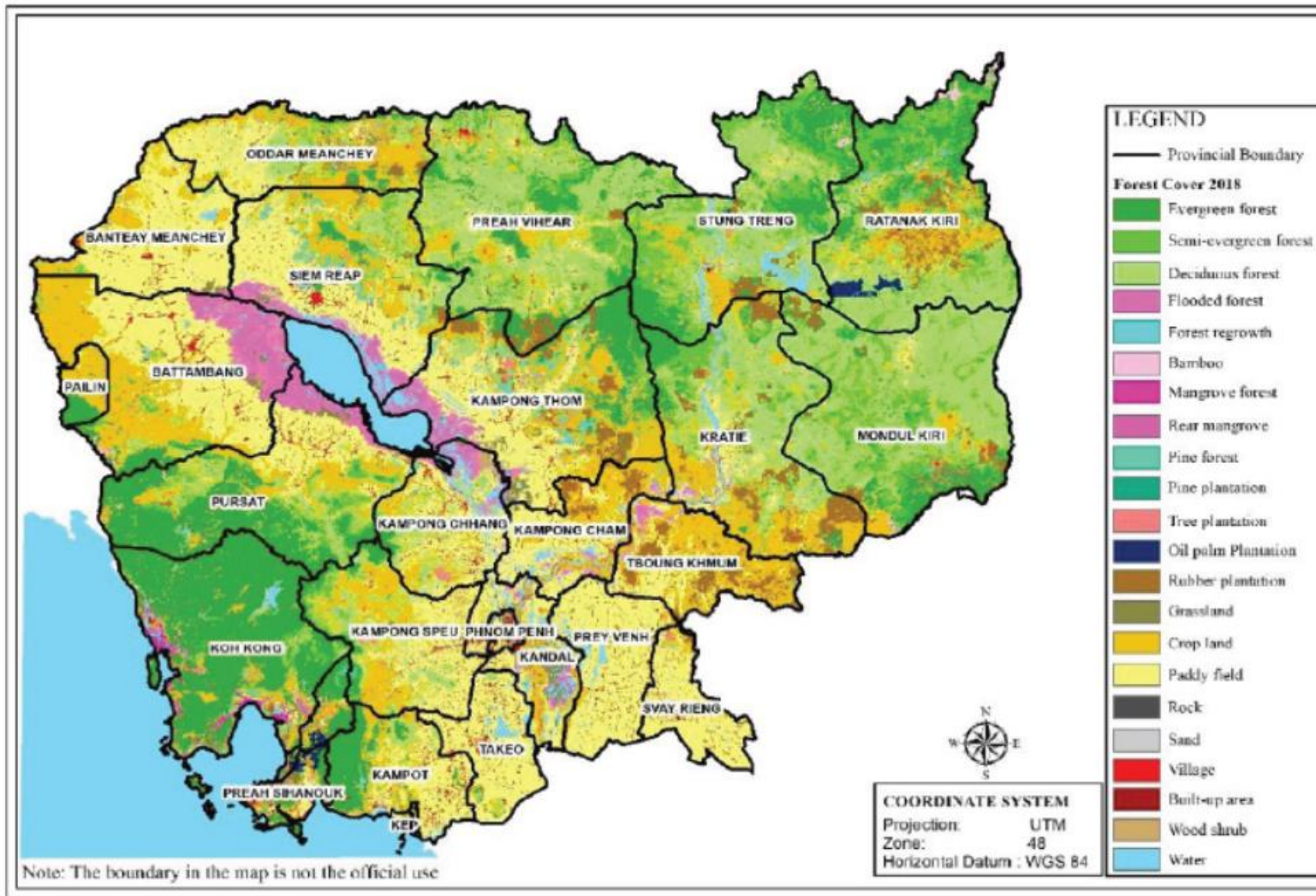
ក្រសួងកសិកម្ម រុក្ខាប្រមាញ់ និងនេសាទ
ជាតិ សាសនា ព្រះមហាក្សត្រ

របាយការណ៍ប្រកួសប្រជែង
ការងារកសិកម្ម រុក្ខាប្រមាញ់ និងនេសាទ
ប្រចាំឆ្នាំ២០១៩-២០២០ និងទិសដៅនេសាទឆ្នាំ២០២០-២០២១

សន្និដ្ឋានកសិកម្ម រុក្ខាប្រមាញ់ និងនេសាទ
ខែមេសា ឆ្នាំ២០២០

Figure 1. Status of cropland areas during a period of 5 years (2015-2019) in Cambodia. Source: MAFF (2020)

2. Land cover/Land use



KINGDOM OF CAMBODIA
 NATION RELIGION KING

**CAMBODIA FOREST COVER
 2018**

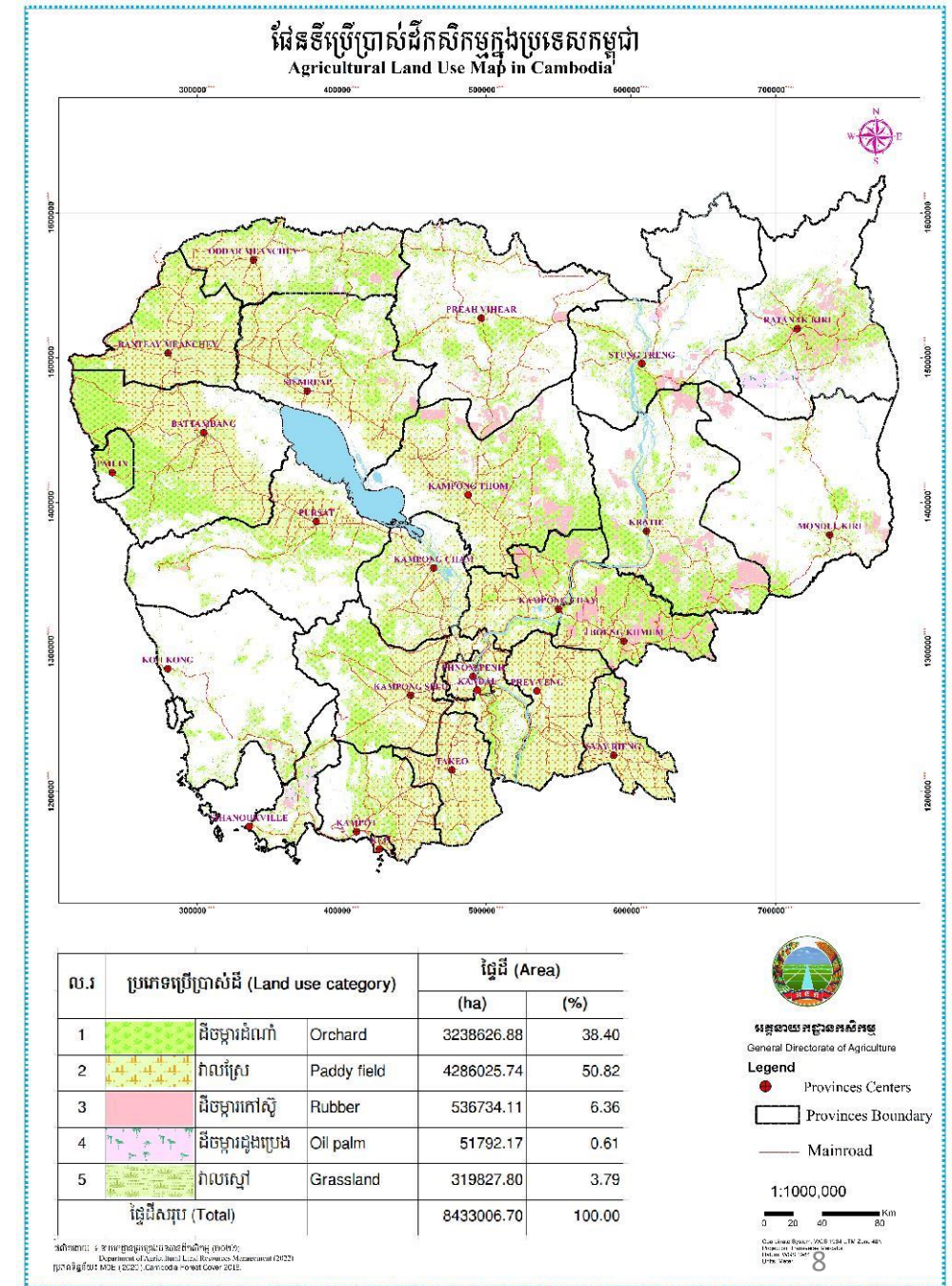
- Forest Cover (REDD+) = 7,922,280 ha (43.62%)
- Agricultural land = 8,433,007 ha
- FC change 2016-2018: **-1.43%**

Source: MOE (2020)

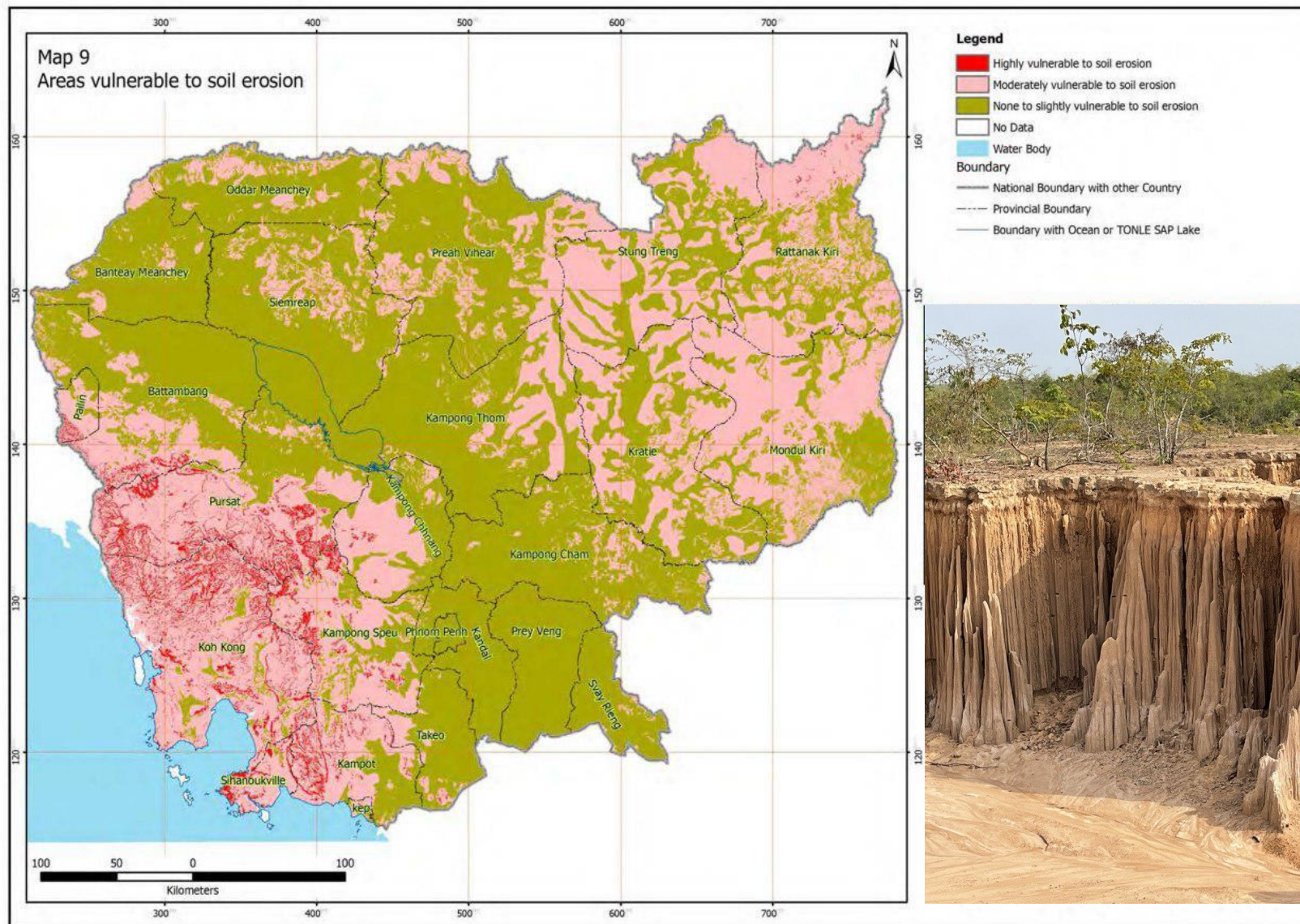
Agricultural LU categories

ល.រ	ប្រភេទប្រើប្រាស់ដី (Land use category)	ផ្ទៃដី (Area)		
		(ha)	(%)*	
1	ដី ធុរកម្ម	Orchard	3,238,627	17.83
2	វាល ព្រៃ	Paddy field	4,286,026	23.60
3	ធុរកម្ម ដូង រុក្ខជាតិ	Oil palm plantation	51,792	0.29
4	ធុរកម្ម កៅស៊ូ	Rubber plantation	536,734	2.96
5	វាល ល្មើ	Grassland	319,828	1.76
សរុប (Total)			8,433,007	46.44

Source: MOE (2020)



3. Land degradation

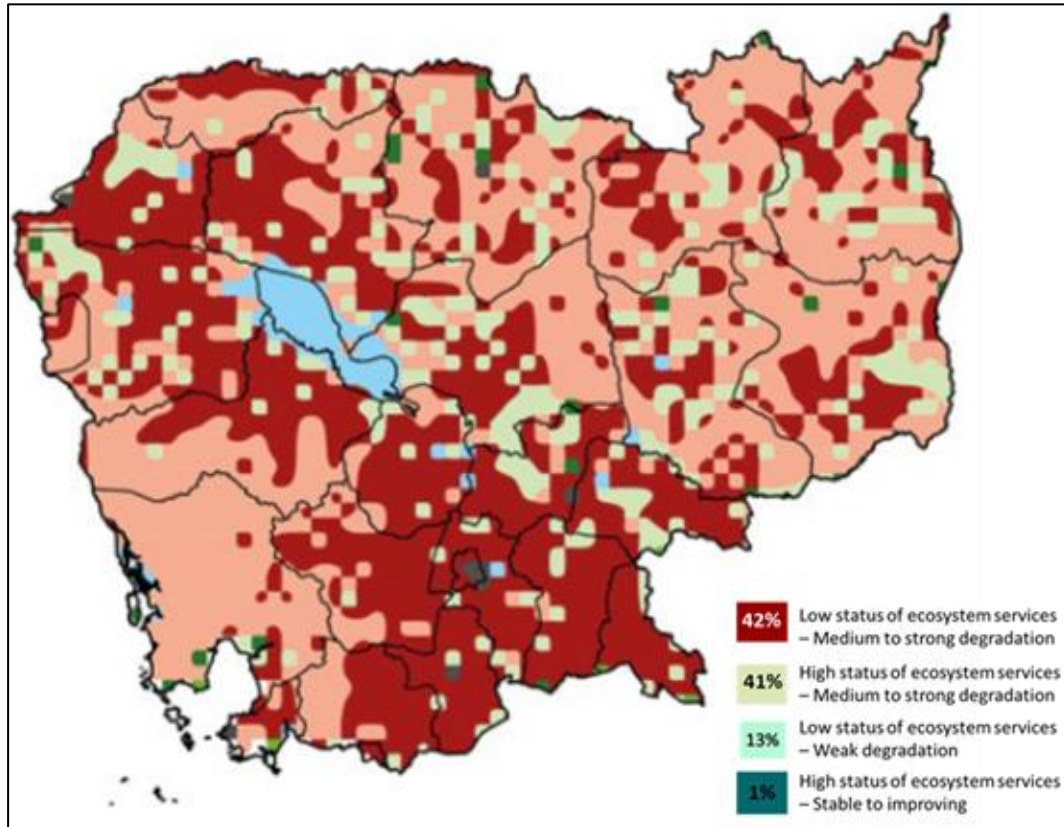


Vulnerability:

- 0.45 million ha – highly
- 7.69 million ha – moderately
- 9.99 million ha – low to none



Land degradation – impact



Land Degradation Source: GLADIS-FAO16

- **Annual cost of land degradation** is estimated at USD 677 million or 8% of the country's GDP (GM/UNCCD, 2018)
- Conventional tillage practice (Maize) increased soil loss by 13 times more than CA practice on 5% slope (DALRM, 2020).
- Soil erosion resulted in losses of SOC (870 kg/ha), N (90 kg/ha), P (0.42 kg/ha), K (10 kg/ha) (DALRM/GDA 2020, unpublished data)

4. Current initiatives for land restoration

- Conservation Agriculture (CA) - Initiatives towards the agroecological transition
 - Bos Khnor (Kampong Cham) – Center of excellence for CA&SI in upland
 - Stung Chinit (Kampong Thom) – CA for lowland rice
 - Battambang – CA extension activities
- ASSET – Agroecology and safe food system transition (Regional project)
 - Preah Vihear – CA and organic agriculture systems
- CASIC – Cambodia Conservation Agriculture and Sustainable Intensification Consortium
 - A PPP platform to scale CA&SI in Cambodia (MAFF lead)



CA adoption in Cambodia



5. Priorities for SLM towards 2030

- Promoting sustainable agricultural land resources management
 - Promoting soil conservation R4D,
 - Achieving land degradation neutrality through National Action Program to combat land degradation (NAP),
 - Soil education (Promoting farmers soil extension program),
 - Soil science (Encourage postgraduate research program thru international cooperation)
- Develop agricultural zoning
 - Land resources and land suitability assessment, crop mapping
- Strengthening climate resilient capacity
 - Apply soil conservation technology (CA, green cover, biochar, etc.) to increase agricultural productivity and to promote environmental-friendly agricultural production, and also contributing towards carbon neutrality.

Thank you,...

